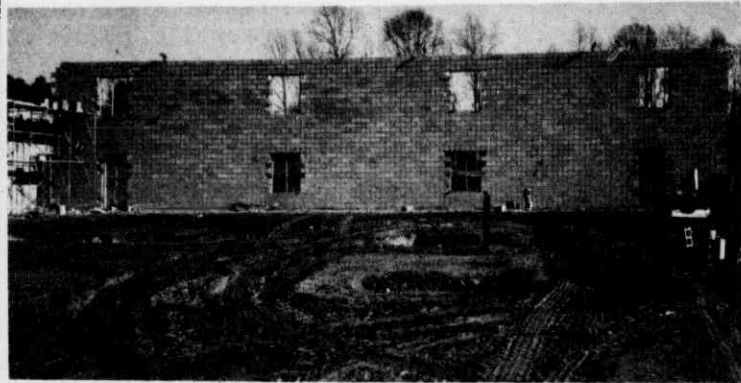


# Together We Are!

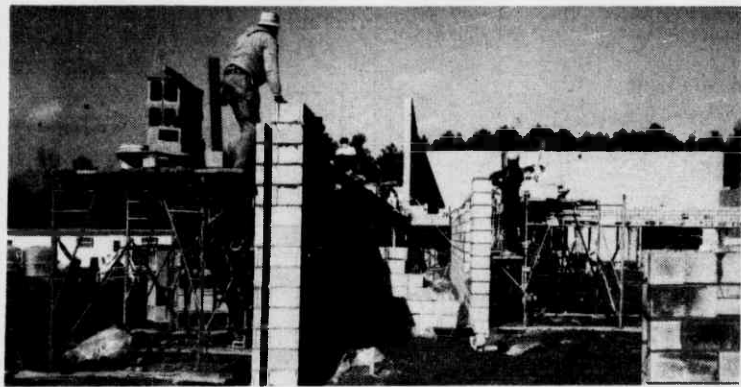
## "And The Walls Go Rumbling Up"



*In the future locker rooms looking across future indoor pool at the outer wall.*



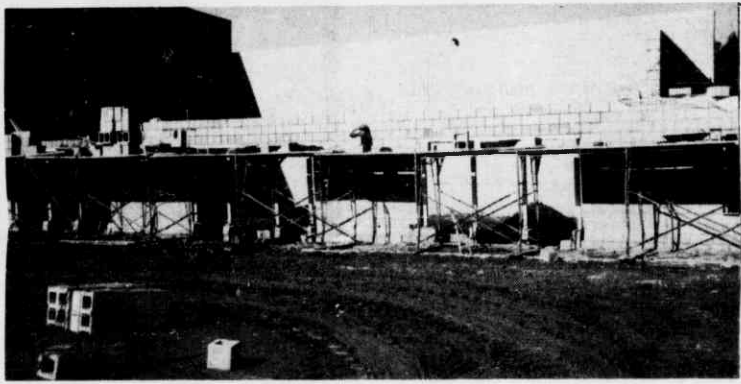
*The gym wall goes up with health club in left rear and outer wall of indoor pool in right rear.*



*This is the corridor running along the gym (left) and leading to racquetball courts.*



*Digging the trenches for plumbing to future health club seen in background.*



*Standing in the gym looking at walls of racquetball courts.*



*Site being prepared for bathhouses for outdoor pool. Tennis courts seen in background.*



*At the "front entrance" the massive size of physical education facilities can be seen.*



*Under plastic covers, work goes on regardless of weather.*



*Pick a brick committee; (l to r) Herman Blumenthal; Harry Swimmer; Alvin Levine; Don Lee, architect; Bill Gorelick are shown behind sample wall of brick-facing chosen for the complete facility.*

**Foundation of the Charlotte Jewish Community, Inc.**