

Women's Division of Federation

Pacesetters To Attend Evening At The Mint

On Nov. 19, Women's Division of the Charlotte Jewish Federation will kick off its 1986 campaign drive with "An Evening at the Mint." This event will be attended by "Pacesetters" and their escorts and will feature an elegant catered dinner in the new Mint Board Room followed by a private tour of the newly completed Mint Museum. The highlight of the evening will be a personal visit and lecture by Ida Kohlmeyer, the artist whose work the Mint has chosen to showcase in a 30 year retrospective.

Ms. Kohlmeyer, whose personality is as complex as her artistry, is a New Orleans native who has created more than 3000 works of art. She was born of Jewish immigrants from Bialystok, Poland and began work as an artist

rather late, after her children were grown. Once she began to paint, her career moved quickly and she made the critical decision to stay in the south to be near her friends and family. According to Milton Bloch, director of the Mint Museum, "Exhibitions of the scope and magnitude represented in the Kohlmeyer undertaking are clearly reserved for artists of very significant stature and accomplishment."

Women's Division is proud to be able to offer this evening to women who contribute a minimum of \$1,000 to the 1986 Federation campaign. To make your reservation or for more information call Bobbi Bernstein, 364-8880; or Emily Zimmern, 366-6713, or the Federation office, 366-5007.

— Bobbi Bernstein

Women's Leadership Went On Mini-Mission To Shalom Park



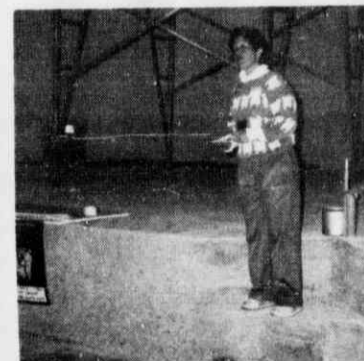
Welcoming Committee: (L to R) Bobbi Bernstein, Ruth Goldberg, Louise Bernstein, Emily Zimmern.



Having brunch in the new facility.



Bill Gorelick leading tour. Note the "hard hats."



Bobbi Bernstein, Women's Division president, welcoming women's leaders.

Book and Author Luncheon To Be Held At Tower Club

On December 3 at 12 noon, well-known Jewish feminist Susan Weidman Schneider will address a Women's Division luncheon at the Tower Club in the Charlotte Plaza building uptown.

Author of Jewish and Female: Choices and Changes in Our Lives Today, Schneider is also editor and one of the founders of Lilith, the groundbreaking independent Jewish women's magazine. A Canadian-born journalist and critic, she speaks from her own experience — as a daughter, wife, mother and individual — as well as with professional expertise about a wide range of Jewish feminist issues: how women reconcile their sometimes polarized identities as women and as Jews; women's changing roles in religious and community life and in interpersonal relations; and the double messages Jewish women receive and transmit about their own education and aspirations.

All women who make a minimum contribution of \$100 to the 1986 Federation Campaign are invited to attend this special event. Everyone will receive an invitation and have the opportunity to participate. Cost for the luncheon is \$10. Reservations may be made by calling the Federation office at 366-5007.



Susan Weidman Schneider

Coordinators for the day are Janet Lefkowitz and Leslie Locke.



Crossing the bridge connecting the two buildings.



Lila Josephson discusses Temple Israel Pre-School. Other speakers were: Mark Bernstein, Foundation president; Terri Cathcart, JCC; Emily Zimmern, Campaign '86; Ruth Goldberg, Federation programs; Eleanor Weinglass, Hebrew Academy; Sally Schrader, president, Temple Beth El; Judy Strause, day care; Adrienne Rosenberg, JSS.

Support Your Federation



A LIMITED TIME ONLY!
COME SEE
OUR
NEW YORK
FUR COLLECTION

A SUPERB GROUP OF FURS CHOSEN
IN NEW YORK ESPECIALLY FOR US. A VARIETY
OF STYLES IN A WIDE VARIETY OF FURS.
ALL REPRESENTING THE QUALITY, VALUE AND HIGH
STANDARDS OF MONTALDO'S. A REPRESENTATIVE
WILL BE HERE TO HELP YOU WITH YOUR SELECTION.

MONDAY, TUESDAY, WEDNESDAY, NOVEMBER 11, 12, 13

MONTALDO'S

ISRAELI CHASSIDIC FESTIVAL '85

פסטיבל הזמר החסידי



Call 366-5007 for tickets

Martha Wallace Dazzles You

with her collection of exciting, sophisticated long and short gowns for the playful yet polished you. Pictured is but one of the fabulous choices to wear to Charlotte's gala affairs.

MARTHA WALLACE LTD.
6401 Morrison Blvd.
Specialty Shops On The Park
Mon.-Sat. 10-6 366-9848

220 N. TRYON, (704) 333-5181 - SOUTHPARK, (704) 365-3308
Charlotte, Durham, Greensboro, Raleigh, Winston-Salem