

# "Pacesetters" Event Honors Lion of Judah Donors

By Baila Pransky

Women's Division's annual "Pacesetters" event was held on Sept. 29 at the home of Bobbi and Don Bernstein. The evening, featuring Bess Myerson, an outstanding human activist, honored the Lion of Judah donors. The Pacesetters are those who give a minimum pledge of \$1250; the Lion of Judah, a minimum pledge of \$5,000.

After a champagne and crepes reception, the program opened with Women's Division President Bobbi Bernstein warmly welcoming the gathering. She extended great appreciation to all the Pacesetters for strengthening Women's Division's 1987 campaign with their pledged support for the vital work of Charlotte's Jewish Federation. The Pacesetters and guests in attendance were: Dorothy and Ike Ashendorf, Bobbi and Don Bernstein, Anita Blumenthal, Lee Blumenthal, Mimi Feibus, Ruth Goldberg, Meg Goldstein and Matt Luftglass, Patty and Bill Gorelick, Pearl Kier, G.G. Kosch, Gloria and Harry Lerner, Sandra Levine,



President Bobbi Bernstein (L) with Renee Gorelick, new Lion of Judah donor.



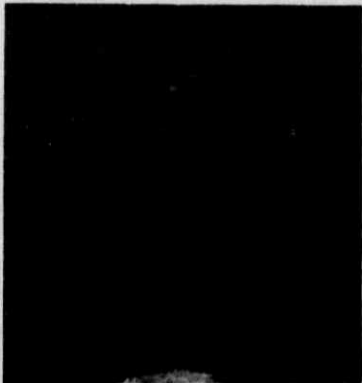
Sandra Levine, new Lion of Judah donor.



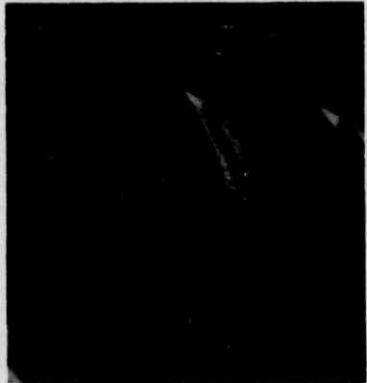
Bess Myerson, guest speaker.



Pearl Kier introduces speaker.



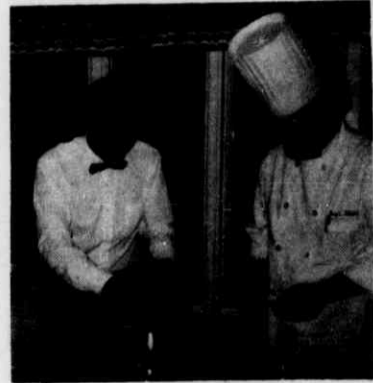
Emily Zimmern, co-chair of Women's Division



(L to R) Dorothy & Ike Ashendorf, Bennett Lyons



(L to R) Louise & Mark Bernstein, Sylvia Speizman



Preparing the crepes.

Mickey and Bennett Lyons, Baila Pransky, Sylvia and Morris Speizman, Ena and

Fred Stern, Emily Zimmern and Marvin Bienstock, Executive Director of Federation.

(A complete list of Pacesetters will appear in a future edition of *The CJNews*.)

Emily Zimmern, cochair of Women's Division, gave an See PACESETTERS page 22

## Mini-Mission Sponsored For "Leadership Women" of Community

By Vicki Hopkins and Ruth Goldberg

The Women's Division of the Charlotte Jewish Federation sponsored a Mini-Mission to the Blumenthal Jewish Home on Sunday, September 28. Joan Gordon, coordinated the day's event for the "Leadership Women" of the Jewish community. The focus of the entire day's program was on our Jewish elderly and our responsibility to them: in Charlotte, in Israel and throughout the world, and at the Blumenthal Jewish Home in Clemmons, N.C. Nineteen women attended the Mini-Mission: Joan Gordon, Esther Frank, Nettie Sutker, Helen Friedman, Elizabeth Small, Tobey Silber, Rhoda Gleiberman, Wendy Rosen, Maddie Joffe, Marcia Simon, Emily Zimmern, Bobbie Pollard, Ruth Goldberg, Vicki Hopkins, Bobbi Bernstein,

Evelyn Berger, Adrienne Rosenberg, Pearl Rohde and Rita Mond.

During the bus ride to the Home, the participants were briefed by Adrienne Rosenberg, director of Federation's Jewish Social Services Department. Ms. Rosenberg explained the goal of the Older Adult Program — "to encourage and assist the older adult and his/her family in maintaining his/her independence and connection with the community as long as is practical or as long as the person wishes." This is accomplished in part through counseling of the elderly and their families, visits with the homebound and the Jewish elderly in non-Jewish nursing homes in Charlotte, and in coordinating activities with the temples and service organizations in their projects for the elderly.

Upon arrival, the group was welcomed by Leonard Guyes,

president-elect of the Board of Trustees of the Blumenthal Jewish Home. Mr. Guyes detailed the history of the Home from its founding by I.D. Blumenthal to its exciting plans for the future addition that will include a 46 room personal care unit and commons building, as well as renovation of the existing facilities. (Ed. note — *The Home currently has 134 beds with a 99.3% occupancy.*)

"The Home is a not-for-profit institution which has a \$350,000 deficit and depends upon funding from local Federations in the Carolinas and gifts from organizations and individuals to offset the operating costs," explained Mr. Guyes.


Ellen White, administrative assistant of the Home, presented a slide show entitled "Fair Oaks at the Blumenthal Jewish Home." This

depicted the plans and purpose of the new personal care units which are designed for more independent individuals who would benefit from some assistance in medical care,

meals, housekeeping and social activities.

Mr. Guyes, Ms. White and Patsy Petree, director of Nur-

See MINI-MISSION page 19



### The Martha Wallace Woman

*"Always the best of the best she can be ..."*

**Martha Wallace Ltd.**  
A Very Special Ladies Specialty Shop  
6401 Morrison Blvd.  
Specialty Shops On The Park


366-9848

## The Perfect Touch

Wholesome

INTEGRATED SWEDISH STYLE MASSAGE  
AT MY STUDIO OR YOUR HOME OR OFFICE

**Libby Ginn**, Therapeutic Massage  
Reiki & Accupressure — 372-3509



## Necie Nails

by  
**Denise St. John**

- Sculptured
- Tips
- Protective Coating
- Mending
- Cure for Nail Biters
- Manicure/Pedicure

La Parisienne  
2400 Park Rd.  
The Courtyard  
333-8423



## THE JERSEY JUMPSUIT

DRAPED BODICE WITH BUILT-IN CAMISOLE AND ELASTICIZED WAIST  
JEWELLED AJUSTABLE BELT  
100% POLYESTER  
IN BLACK  
FOR SIZES P, S, M, L  
BY LUCIE ANN  
\$165

MONTALDO'S