

## HaLailah BBW

HaLailah was very busy in November. We made and delivered challahs for our new Americans, provided the Chai group with a Thanksgiving luncheon, had a clothes drive for Hunter House and Crisis Assistance, had a canned food drive for Jewish Family Services, helped serve at the Seniors Hot Lunch program, and started training for our literacy project "Read Up." We also made Thanksgiving dinner for Rachel House and are collecting needed items for Rachel House. If you

are interested in helping with any of our projects please call Jenny Snyder, 845-1394.

Thanks go to Women's American Ort for allowing HaLailah to be a part of the Pro-Choice/Pro-Life Forum.

We will be helping at gift wrap and need volunteers. Call Kaye Yaffe, 541-3144 or Beverly Eisenoff, 846-6268.

If you would like to join HaLailah please call Jan Weiner, 847-3999 or Cheri Titlebaum, 541-9758.

—Lisa Wohl

## Israeli Consul General Appointed



Dr. Alon Liel.

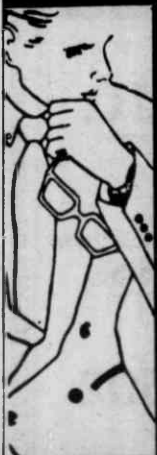
1981-83; Asst. Director of Middle East Dept. at Foreign Ministry, 1983-84; recipient of "Rothschild Fund" for doctoral studies at Hebrew U., 1985-86; Sr. asst. to Director General of Foreign Ministry and was director of Foreign Ministry South Africa, 1986-88; member of Israeli delegation to UN General Assembly and Israeli negotiating team at Taba talks with Egypt, 1988-89.

Dr. Alon Liel began his duties as Consul General of Israel to the Southeastern U.S. (based in Atlanta) in August.

Dr. Liel, born in Tel Aviv in 1948, is married to Rahel and they have three children. He served in the Israel Defense Forces as a Lt. in the Armored Corps, 1966-69. He was severely wounded during an IDF military operation in Karame, Jordan in 1968.

He received his BA in Economics and International Relations at Hebrew U. of Jerusalem in 1972 and then studied at the London School of Economics, completing his MA at Hebrew U. with distinctions in International Relations in 1979.

He has a long list of credits among them: 1977 represented Israel at World Conference on Energy at Istanbul, Turkey; assistant to director of Dept. of Diaspora Relations at Foreign Ministry, 1978-79; Vice Consul of Israel to Mid-Western U.S., 1979-81; Charge D'Affaires of Israel in Ankara, Turkey,



You'll never look so good for so little.

**MILTONS**  
Clothing Cupboard

6631 morrison blvd. 364-8686

## Charlotte Chapter B'nai B'rith Women

Charlotte Chapter B'nai B'rith Women has completed a very busy fall season, continuing its long tradition of community service. October brought a myriad of activities including a delightful family "Shabbaque" expertly planned by Susan Coen, where members and their families celebrated Succoth and Shabbat together. The evening concluded with a beautiful Havdalah service led by past president Linda Binnick.

Our Seniors lovingly decorated pumpkin faces which were delivered to the children at area hospitals and at "A Child's Place" on Halloween. The Charlotte community calendar was mailed to the entire Jewish community. If your copy did not make it to your mailbox, there is a limited supply at the front desk of the "J." Also, please be sure and patronize Bagelworks (364-4000), a calendar sponsor whose ad was inadvertently left off this year's edition. Many thanks to Margie Liebstein, Jody Pinion, Shirley Fytelson and Helen Rosenbaum for their tireless efforts with the production of the calendar.

November's general meeting

featured Michelle Olshan-Perlmutter, an RN with specialization in women's issues and eating disorders. Members enjoyed brunch and a lively and informative discussion on how to take control and responsibility for your life. The month also featured our Annual Older Adult Luncheon. A delicious lunch was enjoyed by older adults and members. Jerry Rabinowitz, a professional pianist, entertained with a medley of Gershwin tunes.

Amblyopia screenings began at area preschools. "A Child's Place," the school for homeless children, continued to enjoy the monthly "Learning Wizard" program presented by our chapter and coordinated by Cindy Katzman. Parentlink, ably coor-

inated by Beth Linderman, continues to be adopted by more schools.

Thanksgiving weekend heralded the start of our annual gift wrap fundraiser for the benefit of BBW projects and programs. This year there are two booths at Eastland Mall, and on December 14 we will return to Cotswold Mall. If you'd like to help call Peggie Rovman, 552-2010.

We extend a warm welcome to our newest members: Charlene Muller, Kimberly Stone, Rhonda Nestle, Louise Lord, Shelley Bronowitz, Sandra Ezrine and Alison Roberts. For more information on our programs or membership, call Abbe Bryan, 542-2811.

— Abbe Bryan

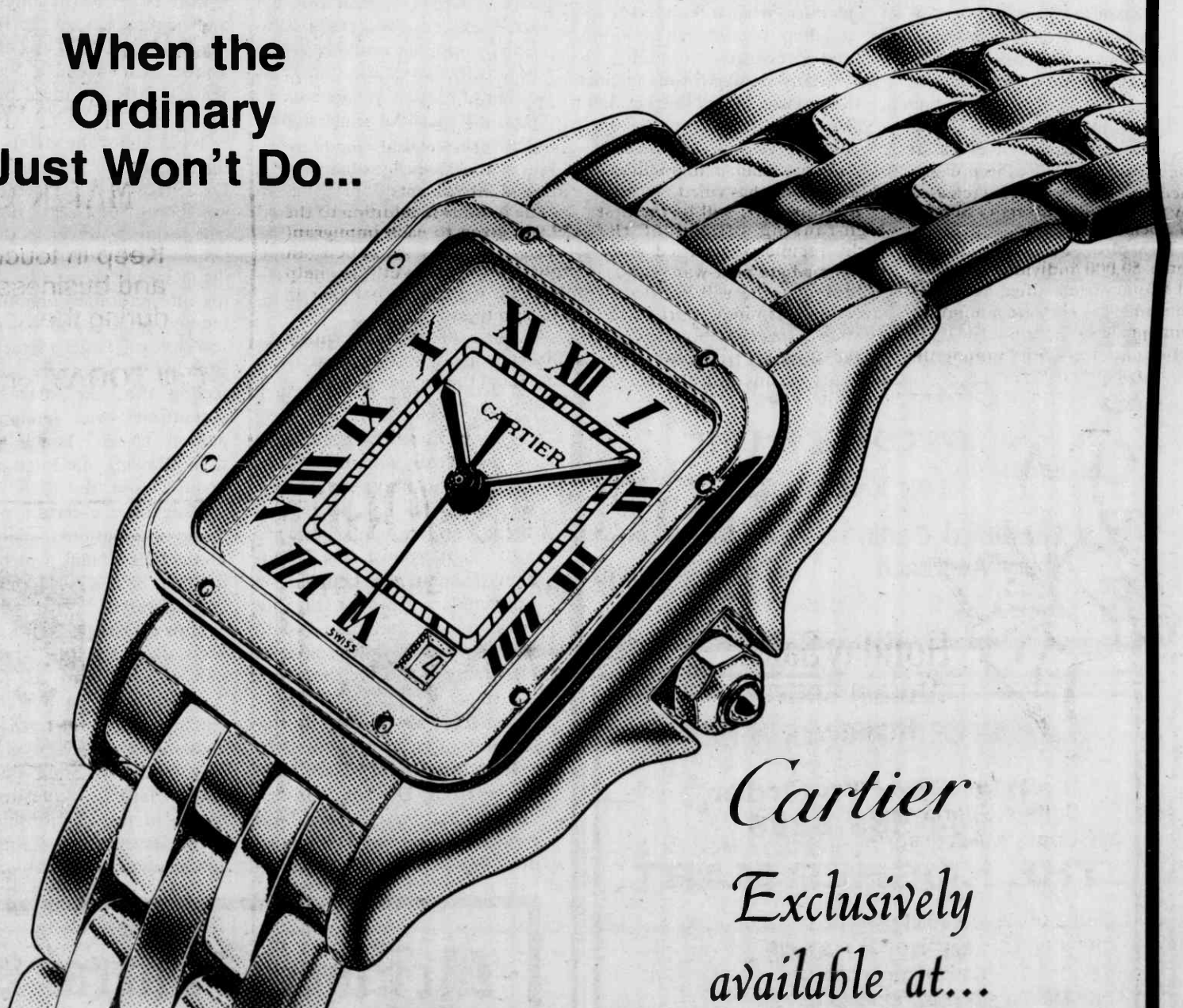
### It Pays to Advertise

Rita 366-6632  
Blanche 366-9715  
Office 366-5007

Ask about our special 6-month rates



When the Ordinary Just Won't Do...



Cartier  
Exclusively available at...



**DAVID'S LTD.**  
DISTINCTIVE JEWELRY

**Radisson Plaza**  
**375-6543**

10-5:30 p.m. Mon.-Fri.  
10-5 p.m. Sat.

**Cotswold Mall**  
**364-6543**

10-6 p.m. Mon. • Tue. • Wed. • Sat.  
10-8 p.m. Thur.-Fri.