

# Meet the Staff Members at Jewish Family Services

Jewish Family Services, a branch of the Charlotte Jewish Federation, is a social work and counseling agency. We are funded by the Federation, our annual Friends of the Agency Campaign, grants, fees from clients and donations. Our geriatric component is open to the entire Charlotte community; the vocational, counseling, limited financial assistance, resettlement and other areas are restricted at present to serving individuals and families where at least one person is Jewish. The Jewish Family Services staff members serving the community and their areas of expertise are as follows: Adrienne J. Rosenberg, MSW, ACSW, Director; Iris E. Madison, MSW, ACSW, Clinical Social Worker; Laurie Gordon, BA, Outreach Worker; Sally Schrader, Resettlement Coordinator; Susanna Horton, BA, In-Home Assistance Case Coordinator; Dori Mileham, Secretary.

**Adrienne J. Rosenberg, MSC, ACSW**, has been the Director of Jewish Family Services since August, 1984. She is responsible for the daily management of the agency, the hiring and supervising of staff, graduate social work students, and agency volunteers. She helps develop and implement new programs and policies, coordinates with other agencies and institutions, both Jewish and general; works closely with lay committees, boards, and task forces; plans and manages the agency's three budgets (agency, local resettlement, in-home assistance); carries an active counseling caseload; writes a monthly article for *The Charlotte Jewish News*; develops public relations for the agency; seeks alternative funding, including grant writing; plans and presents seminars and training for individuals and groups.

Adrienne serves on the FEMA Board, the Mecklenburg County Drug and Alcohol Commission

Religious Subcommittee, the CFIDS Board, is an ex-officio member of the Charlotte Jewish Federation Board and is a volunteer trainer for United Way.

She received her masters degree from Virginia Commonwealth University and has been a social worker for over 27 years. She has worked in corrections, the geriatric field, in community mental health, as a private practitioner, and has taught on the college level.

Adrienne is the mother of two teenage children, Jennifer, 18, and Brian, 15.

**Iris E. Madison, MSW, ACSW**, clinical social worker, has been employed by Jewish Family Services since 1988. She specializes in individual, couple and family



Madison

therapy and has worked with children and adults of all ages with diverse issues. She coordinates the Jewish Family Life Education programs, which provide community members with opportunities to learn about and discuss life topics such as parenting, communication and conflict resolution skills, grief and loss issues.

Iris also has served as a consultant to the Charlotte Jewish Preschool staff and is an active member of the Charlotte Jewish Preschool Board. She provided initial screening and assessment of all Charlotte Jewish Preschool scholarship applicants for Jewish Family Services.

Apart from her work with the Jewish community, Iris has served as a consultant for Charter Pines Hospital in Charlotte. Since 1986, she has worked for Charter Pines Adult and Adolescent In-patient and Day Treatment programs. Iris also has actively participated in United Family Services Family Counseling Division.

She received her MSW from the University of Iowa in August, 1986, and has extensive

post-graduate training in the clinical arena. She is originally from Boston, is married and is both a mother and step-mother.

**Laurie Gordon** is the Outreach Worker at Jewish Family



Gordon

Services. Monday evenings and Wednesdays, she assists people adjusting to life transitions involving medical

hospitalization, financial issues and family-life changes. Laurie currently attends the University of North Carolina at Chapel Hill, where she is pursuing her masters degree in social work, while working part-time at Jewish Family Services. Laurie has a double bachelors degree in sociology and urban studies from the University of Pennsylvania and has been working professionally in Charlotte for nine years. Laurie and Daniel Harris have recently announced their engagement.

**Sally Schrader** was born in Jacksonville, Florida, but has lived in Charlotte over 50 years. She attended Sullins College and Jacksonville University. Sally is married to Robert



Schrader

Schrader and has three children and one grandchild. Two of her children attended the N.C. Hebrew Academy and she hopes that someday her grandchildren will have the opportunity to attend a Jewish Day School in Charlotte.

Sally has been active as a volunteer in the Jewish community for many years, serving on the board of directors of Temple Beth El and Beth El V'Shalom (president 3 years), Charlotte Jewish Federation, Charlotte Chapter B'nai B'rith Women, Charlotte Chapter Hadassah, Charlotte Jewish Foundation, N.C. Hebrew Academy at Charlotte, Blumenthal Home for the Aged, and the Mid-Atlantic Region of UAHC.

From 1974 to 1984, she was the volunteer coordinator for the resettlement of Soviet Jews in Charlotte in conjunction with the Charlotte Chapter of B'nai B'rith Women and B'nai B'rith Men's Lodge and the Charlotte Jewish Federation. During this time, 18 families emigrated to Charlotte.

For the past year, Sally has been the Soviet Resettlement Coordinator for Jewish Family

Services. Nine families emigrated to Charlotte during 1990, and 10 to 12 families are expected to arrive in 1991. In addition to helping with the resettlement of families sponsored by the Jewish community and the future emigration of their families still in the USSR, Sally also assists many other Soviet refugees both Jewish and non-Jewish. She is contacted daily by other Jewish and non-Jewish agencies both in Charlotte and around the U.S.

**Susanna Horton** is the new Program Coordinator for the In-



Horton

Home Assistance program that Jewish Family Services has recently begun. She is coordinating a frail elderly program that is geared to prevent premature institutionalization through assessment of the elderly person's needs, appropriate community referrals and the involvement of homemaker/companions. This service is provided to all elderly persons in the Charlotte area on a sliding fee scale.

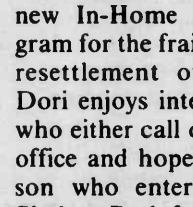
A love for the elderly and a knack for working with older people led Susanna out of the field of education and into the field of gerontology. Her B.A. in Gerontology/Administration from High Point College provided Susanna with a broad study of the physical, mental, spiritual, economic and social needs of America's fastest growing population age group along with the business administration skills to implement programs for them.

Susanna has put these skills to use in nursing homes, volunteer work, the home health industry and currently here at JFS. The In-Home Assistance program has allowed her to put to use everything that she has

learned in a format that benefits Charlotte's elderly and puts her in a position of constantly learning more.

When at home, Susanna and her husband, Scott, enjoy living their childhood all over again with their three young daughters, ages 3½, 5½ and 8.

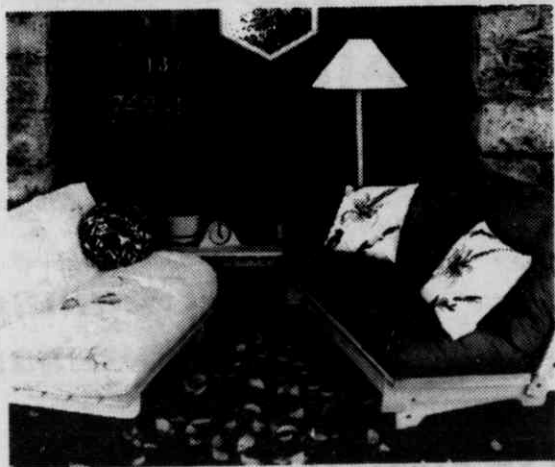
**Dori Mileham**, secretary at Jewish Family Services, has been with the agency since summer, 1988. She provides secretarial support for all the JFS staff and programs, including the new In-Home Assistance program for the frail elderly and the resettlement of Soviet Jews. Dori enjoys interacting with all who either call or come into the office and hopes that each person who enters Room 21 at Shalom Park feels welcome and comfortable. Dori has done secretarial work for about 10 years.



Mileham

Before working outside the home, she had always been proud to state her occupation as "Mother," since, to her, there is no more important work than being a child's first teacher — in morals, manners, behavior, stimulating their desire to learn, knowing themselves, and to love others. When her last child started school, Dori started part-time at CPCC, first studying the academics for the RN program, then thinking of preparing herself more realistically for her dual occupation as mother and worker. Her husband worked out of town and there were no family members nearby to offer help. She went 2½ years part-time at CPCC taking secretarial courses. Dori is married and has a son, 23, and two daughters, 20 and 17.

## NATURAL COMFORT



© 1991 Futon Unfolding

Our futons are made with layers of only the highest quality cotton. Many physicians and chiropractors agree that futons provide optimal support for the natural curvature of the spine.

Isn't it time you experienced natural comfort?

*Futons Unfolding*

2906 Selwyn Avenue • 333-8866  
Monday - Friday 10-6 • Sat 10-5



## FJL ELECTRIC

*Service is Our Business*

Residential • Commercial • Industrial  
35 years experience

Frank Lutz

588-2258

Our Advertisers Support The CJN  
Please Patronize Them

## If You Don't Have This Plaque On Your Deck...

This Beautiful Deck By  
*Deckbuilders Ltd.*

You Don't Have The Best Deck Money Can Buy.

*Deckbuilders Ltd.*  
Simply The Finest. Period.

596-2579

