

# The Charlotte JEWISH news

Vol. 23, No. 2

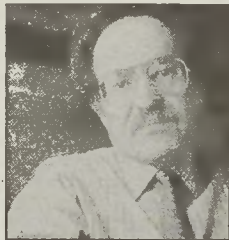
Shevat-Adar 5761

February 2001

## Praise for Professor Alan Dershowitz Attorney and Harvard Law Professor to be Featured at Federation's "Main Event"

In letter after letter, and phone call after phone call, communities are raving about Professor Alan Dershowitz — not only as a charismatic and captivating speaker, provoking much constructive thought and discussion, but also as a most gracious and accommodating guest. He is always a tremendous draw and tailors his remarks to the event. In Toronto, he spoke to a sold-out crowd for the UJA Federation, on the very timely topic "Defending Israel in the Media." Associate Campaign Director Jeff Springer called his speech "brilliant" and said the two standing ovations were unprecedented. From Carl Hoffman, Shir Ami Bucks County Jewish Congregation in Newtown, PA, "Professor Dershowitz' appearance was the most successful

effort of its kind in the history of our Congregation." ☆



Alan Dershowitz

**JEWISH  
FEDERATION  
OF GREATER CHARLOTTE**

Please join us for  
**THE MAIN EVENT  
OF THE 2001 ANNUAL  
CAMPAIGN  
"In Defense of Judaism"**

Guest Speaker  
**ALAN DERSHOWITZ**  
Saturday, February 10  
7:45 PM  
Temple Israel

A champagne dessert reception will follow the program.  
Cover: \$36  
Temple Attire  
You will have the opportunity to make your commitment to the 2001 Annual Campaign.  
For more information, call 944-6757.

## Author of "The Ladies Auxiliary," Tova Mirvis Brings Her Story to Charlotte

In the tiny Orthodox Jewish community in Memphis where Tova Mirvis was raised, Yiddish was spoken with a Southern accent, and fried chicken and black-eyed peas joined the Challah on the Sabbath table. For her first novel, Mirvis, now based in New York City, has recreated this world as seen through the eyes of its female members, conjuring both its sheltering warmth and sometime suffocating insularity with affection and sensitivity. "Everyone there knows each other, everyone's parents know each other, and everyone's grandparents know each other too," recounts Mirvis, who is still a practicing Orthodox Jew. "I wanted to convey what it's like to be on the inside of such a close-knit world, which I am, and also what it's like to not fit into this world, which I don't."



Tova Mirvis

owed. Batsheva's free-spirited, albeit deeply spiritual, interpretation of the traditional Jewish woman's role quickly draws both criticism and admiration, eventually embroiling the community in a fight for its very soul. "The way that this world is so interested in trying to preserve itself is true to the Memphis where I grew up," says Mirvis. But she notes that this way of life also has its "beauty and positive aspects," and uses the

elaborate, family-focused holiday rituals to frame the story.

Please mark your calendar for Thursday, March 22, when the Jewish Federation of Greater Charlotte Women's Division brings Tova Mirvis to our community. Prior to the event on Thursday, February 22 there will also be a book discussion at the home of Donna Lerner. For more information on these events, please call Marnie Moskowitz at 704-944-6764 or email her at mmoskowitz@shalomcharlotte.org. ☆

## Singer/Songwriter Craig Taubman to Appear at Temple Israel Sunday, March 4, 7:00 PM

Craig Taubman has established himself as a unique voice in family entertainment, blending kid-friendly themes with adult musical appeal. He is a proven entertainer who has been writing and performing music for children and their families for over 22 years.

As a student at Los Angeles Hebrew High School, Taubman put his money where his mouth was.

It wasn't his money, actually. "I had an administrator at the school who saw how passionate I was about my Judaism, and he knew of my interest in music," recalls Taubman.

"So he took a chunk of the school's budget — \$5,000 — gave it to me and said, 'Use your passion for the good of you and your peers.'"

Taubman used the money to put out an album to reach out to other Jewish kids.

Suddenly Taubman was a performer.

"That album gave me credibility," says the Southern Californian, who has since released many Judaism-themed recordings. These works have been invaluable to parents who want their children to learn Hebrew while acknowledging their Jewish heritage. The hip-hot music makes the lessons go down nice and easy.

Craig has been performing in public since nursery school. Well,



Craig Taubman

actually, his wife, Louise, who was a director of a nursery school, invited her husband to share some of his original tunes with her charges one fateful day in 1987, and children's music has been a better place ever since.

But his interest in music surfaced long before that. He and his three siblings had a preteen singing group called The NewMelody, but, Craig confesses, they didn't come from musical parents. "Dad couldn't carry a tune in a bucket," he recalls.

After forming a Jewish group with his brother Gene and recording a couple of albums with sister Caren Glasser (now a cantor), he got the attention of the then-neophyte Disney Channel. *Makin' Music* was filmed as a popular

Kaleidoscope concert special, followed by the release of Rock 'n Toontown, celebrating the opening of the Disneyland attraction. "I was very fortunate. Extraordinary exposure, resources and great experience came from working with Disney," he says.

Initially, Craig wrote music "that I was told parents and kids wanted to hear and sing about. Traditional family and car music." But after becoming a parent, he started to "think about what kids might be feeling." Hence, two of his most popular songs, "Haircut" and "Mom's Baby," deal with real feelings of fear, jealousy and abandonment using clever lyric, gentle reassurance and fresh perspective. His two talented children, Noah, 10, and Abby, 9, sing on his albums; his music company, Sweet Louise, is named for his wife; and don't be at all surprised if their dog, cat and koi fish are dancers in Craig's live shows.

Craig enjoys a successful career in television and film composing as well. He has composed music for Television Series on Fox, Showtime, HBO, and PBS. Craig's music has also been in films from Paramount, New Line Cinema, as well as Disney. His songs have been recorded by such respected artists as Chita Rivera, Whoopi Goldberg and Jennifer Holliday.

(Continued on page 10)

## Joint Distribution Committee to Help Earthquake Victims in El Salvador

As you know a major earthquake that struck San Salvador has killed more than 600 people and left some 4,000 others missing and feared dead.

While the Jewish community in San Salvador was spared any damage, many others were not as fortunate. Tens of thousands of people

have been left homeless throughout the country, and now the Health Ministry is worried about the possible outbreak of cholera from contaminated water, dengue fever from mosquito bites and respiratory infections.

Combined with the devastating toll on human lives, the government estimates the earthquake caused up to \$1 billion in damage in this \$6 billion-a-year economy.

We cannot stand silently while

(Continued on page 14)

## The Jewish Federation of Greater Charlotte

2001 Campaign has reached

**\$1,418,000**

Help us help Jews in Charlotte, in the U.S., in Israel and all over the world. Please consider making your contribution when called upon.

Our goal is \$2.3 million

## Inside this issue . . .

My Trip to Eastern Mediterranean/Black Sea . . . pp. 20-21  
By Rita Mond

Solidarity Missions to Israel . . . pp. 24-25  
Mark Rabinovitz represented Charlotte in a UJC mission to Israel

Tu B'Shevat . . . pp. 26-27  
Happy Birthday to the trees and the rest of nature

Federation Page . . . . .	page	4
CAJE . . . . .	page	8
Lubavitch of North Carolina . . . . .	page	9
Temple Israel . . . . .	page	10
Jewish Family Services . . . . .	page	11
Temple Beth El . . . . .	page	12
Charlotte Jewish Preschool . . . . .	page	13
Women's Events . . . . .	page	13
Jewish Traveler . . . . .	page	14
Speizman Jewish Library . . . . .	page	15
Charlotte Jewish Day School . . . . .	page	18
Jewish Community Center . . . . .	pages	22-23
Mazel Tov . . . . .	page	29
Dining Out page . . . . .	pages	30-32

**Connecting Families  
Sustaining Tradition**  
SHALOM FARE

**840 FAMILIES &  
INDIVIDUALS HAVE  
MADE THEIR PLEDGE!**

**MAKE YOUR  
PLEDGE TODAY!**

See Page 19