

The Charlotte JEWISH news

Vol. 23, No. 4

Nisan-Iyar 5761

April 2001

Community Yom HaShoah Observance Scheduled for April 20 at Noon in Marshall Park

By Amy Krakovitz

Kristallnacht. Auschwitz. Warsaw Ghetto.

Just hearing these words conjures up dark images of man's greatest offense against fellow man: The Holocaust.

One day was set aside by the Israeli Knesset to commemorate the fallen, the anniversary of the uprising in the Warsaw Ghetto, 27 Nisan. This year, that date falls on April 20. In Charlotte, Mayor Pat McCrory has proclaimed April 20, 2001 Holocaust Memorial Day.

The Jewish community of Charlotte will join together to observe that day of recognition with prayer, speakers and a musical presentation. The program is scheduled for noon in Charlotte's uptown Marshall Park.

"The outdoor venue will be new for us," says Marnie Moskowitz of the Jewish Federation of Greater Charlotte,



the coordinator of the program. "But we wanted the central location to invite the entire community to join with us in remembering."

Rabbi Jim Bennett of Temple Beth El will help put together the program with Rabbi Murray Ezring of Temple Israel who will speak, as will Dr. Susan Cernyak-Spatz, a professor at UNC-Charlotte and a survivor of Auschwitz and other concentration camps. The children of the Charlotte Jewish Day School will perform some musical selections, under the direction of school's principal, Mariashi Groner.

"Yom HaShoah, or Holocaust Remembrance Day, is a profound moment for all people of conscience," says Rabbi Jim Bennett of Temple Beth El. "For the Jewish community, it is a time of solemn remembrance of a tragic chapter in our history, when each and every Jew is touched by memories of loss. For all people of faith," he continues, "it is a time of community introspection, when

(Continued on page 5)

Super Sunday - An Event for the Entire Community



Roni Fishkin

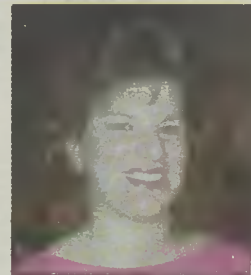
Super Sunday is coming and we hope you will answer the call. According to Roni Fishkin, Super Sunday co-chair, "Super Sunday will be a day when we bring all of the agencies together to work toward a common goal. We are asking all of our recipient agencies to provide at least twelve volunteers to assist us in making phone calls."

On Sunday, April 22 we will be at the phones all day from 9:00 AM to 9:00 PM. Approximately 1,000 households will be called. Follow up calls will be made on Terrific Tuesday and Tremendous Thursday. "We will close the campaign after Super Sunday week," said Eric Sklut, 2001 Campaign Chairman. "I hope everyone will make their pledge between now and the close of the campaign. We want every

household to 'answer the call,' thereby, greatly increasing the number of households making gifts this year. We have surpassed the \$2 million mark as of the beginning of March, and now we are in the home stretch."

"We are seeking donations of gift certificates for lunches, dinners, and goods and services. We plan to have hourly drawings to give our volunteers a boost during the day. If you are in a position to donate a gift certificate, please call the Federation office at 944-6757," said Stephanie Brodsky, co-chair of Super Sunday. "Also, if you would like to volunteer, please let us know - you don't have to wait to be asked. We need people to make phone calls, as well as volunteers to write thank you notes, and to record gifts."

The Jewish Federation of Greater Charlotte is the umbrella fundraising agency for the Charlotte Jewish community. Through our support of such agencies as Jewish Family Services, the Jewish Community Center, and the Blumenthal Jewish Home we are able to assure that quality human services are delivered to Jews in need. Our commitment to maintaining and strengthening Jewish identification, commitment and continuity through Jewish education is carried out through our gifts



Stephanie Brodsky

to the Charlotte Jewish Day School, the Preschool on Sardis, the Charlotte Jewish Preschool, CAJE and the Consolidated High School of Jewish Studies. Our gifts to BBYO, Hillel and Teen Israel provide cultural, social and religious programs for high school and college students. Our allocation to the Community Tzedakah Fund provides emergency loans for families in crisis; and our gift to the Hebrew Cemetery provides dignified burial services for indigent community members.

For a complete listing of our recipient agencies, you can log onto our web site www.jfgc.org, or call the Federation office at 704-944-6757. ☆

JEWISH FEDERATION OF GREATER CHARLOTTE

JEWISH FEDERATION OF GREATER CHARLOTTE

Mitzvah Day is April 29; Both Kids and Adults Can Make a Mitzvah

By Stuart Meyerson

No, he's not Tony Soprano, but Bob Lidz can be a compelling force. Not long ago he grabbed me by my scrawny neck, pulled me close so he could whisper, and told me that I was going to chair Temple Beth El's Mitzvah Day again ... or else.

I assembled my "lieutenants," a devoted group of "do-gooders" who owe everything to the Mitzvah Day family and will do whatever it takes to bring mitzvot to Charlotte. The likes of Laurie "don't mess with me" Smith, Harvey "I look too good to be 50" Smith, Marcy "I love our MD frog" Arnold, Howard "Grumpy" Wollner, and Kelly "I'd rather be at the meeting" Gaines. Yup, with a crew like this how could we miss?

But just as I thought I knew the score, the religious school made a bold and exciting decision to combine their Mitzvah program with ours and, WHAM, the evolution

of Mitzvah Day continued. Now the MD family was larger than ever. Now and for the first time the kids and the grown-ups get to feel the power of Mitzvah together on Sunday, April 29 at 8:30 AM in Temple Beth El's social hall. We'll start with a delicious (I promise) bagel breakfast, a brief opening ceremony and then, POW, we'll hit the trail spreading mitzvot throughout the day.

It's time now to sound the Shofar! Call in the troops and start filling out those applications to be a member of the MD family. We will have applications available to you through the mail, at the temple, at the JCC; you name it, they will be available. If you want to participate as an MD captain please call me, Stuart Meyerson at 704-944-9109 or e-mail your interest to: smeyerson@manningstaffing.com.

So on behalf of the entire MD Family see you April 29 cause you

don't want to make "the godfather" mad.

Here are the projects available for Mitzvah Day. Sign up now!



Building a house for Habitat for Humanity at MD 2000.

Religious School Projects

Both the 8:30 AM and 11:30 AM sessions of Religious School will join together for this special event. Please arrive at the Temple at 8:30 AM to receive your Mitzvah Day Registration Packet. Following opening ceremonies, all participants in the Religious School projects should proceed to

the sanctuary for a special Religious School opening ceremony. Religious School projects will take place within Shalom Park until noon. Please sign up for one of the Religious School projects below or any of the other MD 2001 projects on the following page; however, make sure that your children meet the age requirements. If you have children who span a variety of ages, your family may split up in order to choose more than one project, or you may send a child with another responsible adult. Parent participation is required.

1. Mitzvah Circuit Family Program.

Participants will rotate to three stations to learn about Mitzvot & do related projects. Pre-K thru 2nd grade. Stations include mitzvot of: Feeding the Hungry — Decorate and bag cookies for a children's shelter. Decorate bags and make lunches for the Salvation Army. Visiting the Sick — Create a gift to cheer

sick children at CMC Children's Hospital. Honoring the Elderly — Create challah covers for local Jewish seniors.

2. An Unbirthday Party: The mitzvah of welcoming the stranger. Participants will create an Unbirthday Party for underprivileged children. A carnival-like atmosphere will be created with booths and activities. You may sign up for both parts 1 and 2. Part One: The Unbirthday Party set up. Time: 9 AM to 12 noon. Ages 10+. Part Two: The Unbirthday Party. Time: 12 noon to 3 PM. Hosted by the Gimmel and Liberty Groups.

3. Park Clean-up: The mitzvah of protecting the environment. Ages 8+. Families travel to a local park to clean up and mulch the beautiful grounds of McAlpine Greenway.

4. Maimonides Gift Shop: The mitzvah of helping the needy. Ages 7+. Maimonides

(Continued on page 26)

Inside this issue . . .

Arafat's Rule Must Pass.....	p. 3
By Ken Stein	
Yom HaShoah	pp. 20-21
Holocaust Memorial Day	
Yom HaAtzma'ut.....	pp. 28-29
Israeli Independence Day	
Passover	pp.35-39
Pesach: Food, Celebrations, History	

Federation Page	pages 4-9
Temple Israel	page 10
Temple Beth El	page 12
Charlotte Jewish Preschool	page 13
Speizman Jewish Library	page 16
Jewish Traveler	page 17
Charlotte Jewish Day School	page 18
CAJE	page 19
Women's Events	page 22
Lubavitch of North Carolina	page 23
Jewish Community Center	pages 24-25
Youth Visions	page 26
Jewish Family Services	page 27
Dining Out page	pages 30-33
Mazel Tov	page 34

The Jewish Federation of Greater Charlotte 2001 Campaign has reached

\$2,042,830

Help us help Jews in Charlotte, in the U.S., in Israel and all over the world. Please consider making your pledge when called upon.