

CAROLINA MARKING DEVICES, INC.

P.O. BOX 32143 · 3405 S. TRYON STREET
 CHARLOTTE, NC 28232-2143
 TEL. (704) 525-7600 FAX (800) 777-8619

**Rubber Stamps
 Notary and Corporate Seals,
 Laundry Markers, Stenciling Supplies**

SAME DAY SERVICE

Ada Shapiro

Jeffrey Shapiro

“Weed Warriors” at Charlotte Jewish Day School

Ask any fifth-grade student at CJDS to describe this year’s science curriculum and be prepared for a lecture on invasive versus native plants, water quality, wetlands preservation, sediment analysis, and environmental requirements for bridges built over flood plains. The students will also explain how this curriculum is an extension of our school’s ongoing and expanded motto for the year. “Caring for Hashem’s Creations, Both Big and Small.”

An innovative science unit, coordinated by CJDS Program Director Vicky Hirschmann and under the guidance of the Charlotte-Mecklenburg Water Quality Department, will transform Shalom Park into an outdoor classroom and laboratory. Instead



Benjamin Beiser and Alex Randle work as a team to collect weeds.

begged to keep working through their recess.

When all the area has been cleared of this nuisance vegetation, the students will begin construction of nature trails and environmentally-friendly access points along the stream. While the project is expected to take several years to complete, this year’s graduating class feels privileged to be allowed to design the entire habitat. In addition to expanding their scientific knowledge, they will also use math skills to design the layout of the habitat and to calculate the amount of materials required for each phase. As an

ture as they create a wildlife habitat beside the stream that runs through Shalom Park. This year’s class will be the “pioneers” in uncharted territory as they prepare the way for future CJDS students to maintain and expand the habitat. The students have already been designated as “Weed Warriors” by Mecklenburg County for tackling their first assignment with gusto—clearing the area around the stream of invasive plants to allow the growth of native plants. On their first day of work, they collected over 150 pounds of honeysuckle and Japanese stilt grass and



Frannie Cohen clears the way for native plants.

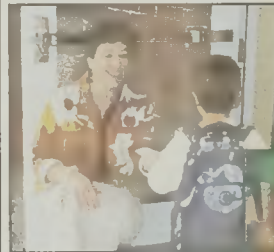
added benefit of the program, the students will learn cooperation and team-building skills as they work together to enhance the beauty of Shalom Park. ☆



Danny Gamlin fills a bag with honeysuckle.

of relying on worksheets and textbooks, the students will be mentored by professionals from Mecklenburg County environmental agencies and community members skilled in landscape design, horticulture, and architec-

Busy Start for Charlotte Jewish Preschool



Morah Denise with good morning high fives.



Ms. Elka tells the story of Jonah and the Big Fish.



Music with Miss Patti and her one year old friends.



Ms. Andrea's class at Hunter Farms.

Happy Chanukah Allen Tate Realtors

SIMPLE THOUGHTS FOR A HAPPIER NEW YEAR...

"Think freely. Put on perfume. Smile often. Send special messages. Love each other. Make new friends. Reconnect old ones. Tell those you love them you do. Feel deeply. Forget trouble. Forget an enemy. Help... Listen to every voice. Give your best. Observe nature. Make choices happen. Observe every star. Give in. Force enough to make. Push over. Dream. Share ideas. Keep a promise. Look for mistakes. Give as you get. See beauty everywhere. Work hard. Be nice. Try to understand. Take care for people. Make time for yourself. Laugh heartily. Spread joy. Take a chance. Reach out. Let someone in. Try something new. Show them. Be off somewhere. Be here in yourself. Trust others. Set a goal. Love in secret. Be nice. Cry when you need in. Trust life. Have faith. Enjoy moments. Comfort a friend. Have good ideas. Make connections. Leave your mark."

Matti Ordan Reider
 Specializing in Service Since 1987

704.849.6654 Office
 704.904.7250 Mobile

Experience • Knowledge • Service

Can Dentistry Really Be Comfortable?

At McKee Dental, we believe that creating smiles should be comfortable. Our knowledgeable and experienced team combines modern technology with a human touch to create smiles every day...

(877) 4-MY-SMILE
 www.McKeeDental.com

McKee Dental
Creating Smiles Every Day!

Victoria L. Malz DMD & Ryan C. Woodman DMD

McKee Dental
 5672 International Drive, Suite 217
 Charlotte, NC 28270
 (704) 442-1991

We are happy to help with most insurance plans. Long term payment plans available through Capital One Healthcare.