



Jewish Family Services



Billy Schwartz, JFS Volunteer of 2006

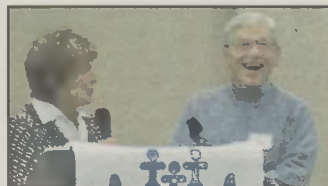
Billy Schwartz won this year's JFS Volunteer of the Year Award. Here he talks about his life and his passion for volunteering.

Please describe what you do at JFS.

I keep up with the JFS Food Pantry. We receive donations from school groups, individuals and Second Harvest. I receive all the non-perishable items and stock them, so JFS clients can come and shop in the Food Pantry. On a regular day, we have over 1,000 items in the Pantry from soups to canned fruit to cookies and a wide range of Jewish foods. We also receive weekly shipments of fresh baked goods from Panera Bread. Clients have the opportunity to select a healthy assortment of basic needs and specialty items.

How did you get involved at JFS?

I had recently retired and was looking for volunteer work. I knew Harriet Perlin, Coordinator



Billy Schwartz gladly accepts his volunteer of the year award from Harriet Perlin. Photo by Peter Feldman.

of Volunteer Services at JFS and she suggested I work at the Pantry. *What do you like most about what you do at JFS?*

I work about 10-15 hours per week and I enjoy what I do at JFS because I have the opportunity to see the pleasure in people's faces when they pick-out their groceries.

What were you doing before you retired?

I was the CEO of Schwartz Steel Service Inc. in Gastonia. I

have been in Charlotte for 15 years. I was born in Charlotte and then raised in Newport News, VA.

Where do your family members live?

I live here in Charlotte with my wife Fran. My son Benjamin also lives in Charlotte and our other son Scott and his wife Tobin live in Durham, NC. *What do you do for fun?*

When I am not working at the JFS Food Pantry I enjoy a good game of golf and I like to work out at the JCC. Fran and I also enjoy traveling quite a bit. *What are your thoughts on JFS, its programs and services?*

From what I have observed JFS is an outstanding agency. The staff is very dedicated and professional. Their mission is to help those in need, you can't do much better than that.

What are your hopes for the future for you and JFS?

I hope JFS is around long after I fully retire, hopefully that will be quite a while yet. ☆

Richard Roskind
Broker/Realtor®
704-905-6175
rroskind@aol.com



Mickey Gold
Realtor®
704-779-5859
mickgold@aol.com

Gold/Roskind Team
www.GoldRoskindHomes.com



3420 Toringdon Way, Suite 200
Charlotte, NC 28277
©2006 An independently owned and operated member of The Prudential Real Estate Alliance, an Equal Housing Opportunity

SCARLETT PLUS SIZE BOUTIQUE

SALE

30% to 70% Off

FALL/WINTER MERCHANDISE

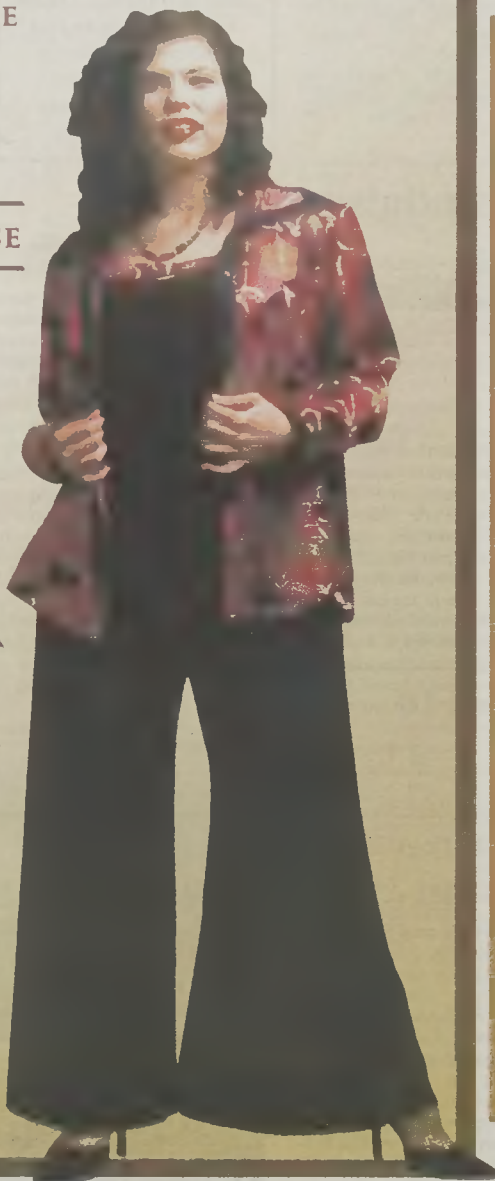
- Karen Kane
- Caribe
- Dué Per Dué
- Eileen Fisher
- Vikki Vi
- And Many Others!



Conveniently located in Sharon Corners Shopping Center, across the street from SouthPark Mall.

SHARON CORNERS
4732 Sharon Rd., Suite P
Charlotte, NC 28210
704-552-7383

Monday & Tuesday 10 - 7 p.m.
Wednesday-Friday 10 - 6 p.m.
Saturday 10 - 5 p.m. Sunday 11 - 3 p.m.



You and Your Aging Parents

JFS has received a number of calls for members of our community who are dealing with aging parents. Some questions we hear are:

How do I look after my parents, my own family and myself?

Things are falling apart and I don't know what to do.

How do I deal with the emotional conflict of role-reversal?

How do I make the most of the time we have?

JFS would like to start a support group focused on you and your aging parents.

We are trying to determine the community's interest level in this type of program. Please call Leah Gevirtz, JFS Case Manager, 704-364-6594 or lgevirtz@shalom-charlotte.org and share your concerns, your interest and your best time to meet. There would be little or no charge (possibly a small materials fee) to participate in the Support Group. ☆

Mitzvah Maker Cooks

Ann Abel, Linda Babich, Penny Eisenberg, Donna Emerson, Iris Friedlander, Ruth Goldberg, Katherine Goldstein, Linda Isser, Claire Krusch, Linda Levy, Roberta Malickson, Anita Shapiro, Marcia Stern, Judy Strause