

# JFS Family Connections

## History and Purpose

Family Connections was designed to meet the needs of elderly or disabled residents of Greater Charlotte whose families reside outside the area. The service also helps family members who cannot monitor the well-being of their loved ones by aiding them in advanced planning for the handling of any emergencies which may arise.

## Staff

Family Connections is staffed by a professional case manager, Leah Gevirtz, experienced in working with the elderly and disabled. The JFS case manager con-

nects out-of-town family members with the day-to-day care needs of their older or disabled relative. While respecting the independence and dignity of the senior adult, Family Connections strives to relieve family members of the fear and worry that distance can create.

## Testimonial

"JFS and Family Connections has been a true life-saver for us. Not being able to physically be there for my father has been frustrating. But knowing that JFS visits with him, monitors his diet and sits in on doctor appointments has offered me and my siblings a

peace-of-mind that we didn't think we'd experience at this stage of his life."

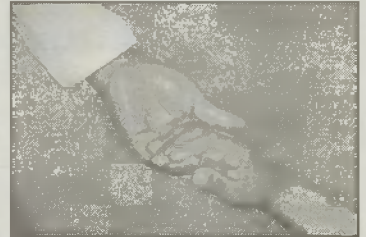
## Family Connections Process and Services Provided

The initial contact is typically made by interested family members to discuss the personal needs of their family member with the Family Connections Case Manager. A professionally trained case manager completes an assessment of the individual's strengths and needs, psychological and social functioning, physical limitations, and independent functioning. Based on the initial assessment, the Family Connections Case Manager provides the senior adult and family with an individualized report of findings and rec-

ommendations of services and programs. The senior adult and family can decide to implement the recommendations themselves or contract with the Family Connections Case Manager for continued services and assistance. Some examples of services provided by the Family Connections Case Manager include: improving diet, increasing exercise, expanding social options, recommendations for in-home assistance referrals to facilities and programs and monitoring of ongoing needs, advocacy at doctor appointments, and clarification of medications/dosages, budgeting and other life skills.

## Referral Information

If you need additional information or to make a referral to Family Connections, please contact Leah Gevirtz at 704-364-6594 or leah.gevirtz@jfscharlotte.org. ☆



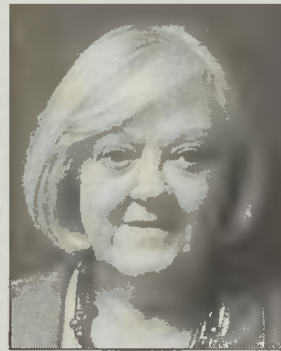
# Susan Proctor to Serve JFS as Volunteer Coordinator and Marketing Manager

Susan Proctor has joined Jewish Family Services as Marketing Manager and Volunteer Coordinator. A Charlotte native, Susan has long been an active member of both Temple Beth El and the Charlotte community. She currently serves as a member of Temple Beth El's Sisterhood Board, on the Caring Committee, the task force for Shalom Bayit - the Jewish effort to educate, assist and prevent domestic violence in the Jewish Community and as Chair of the synagogue's Adult Education Committee. Susan is also a former JFS Board member.

In the greater Charlotte community, Susan has been active in Mecklenburg County Women's Commission, having served as chair of the Advisory Board as well as a member of the Domestic Violence Advisory Board.

Professionally, Susan has a strong marketing and communication background having served as Director of Sales and Marketing for W.A. Buening, Development Director for Printing Industries of the Carolinas and Executive Director of March of Dimes. She received her BA degree in English from University of North Carolina at Charlotte. "It was still Charlotte College when I went there - just me, Bonnie Cone and two buildings."

When asked why she was drawn to JFS, Susan says that while she has longed served this community as a volunteer, the opportunity to work full time as a Jewish professional was something she couldn't pass up. "I see JFS as a perfect fit for me because it allows me to be part of this amazing community-wide effort."



Susan Proctor

Susan's daughter, Buffy, and son-in-law, Jeffrey Skolnick, live in Raleigh and her son, Benji Helbein resides in Charlotte. ☆

# Donations to Jewish Family Services in December 2007

## MAZEL TOV ON

Your retirement to Harriet Perlin from Barbara and Alan Katz, Meg Goldstein and Matt Luftglass, Mollie Form and Lori Bellefond

Rabbi Faith Cantor's installment as Associate Rabbi of Temple Israel, by Roseline and Douglas Mann

The Bar Mitzvah of Matthew Rubin and thank you for your donation to JFS in Matthew's honor

The Bat Mitzvah of Mariah Bermanke and thank you for your donation to JFS in Mariah's honor

## HAPPY BIRTHDAY TO

Saul Wojnowich from Harriet and Mark Perlin, Jill and Ed Newman

Harry Lerner from Jill and Ed

## Newman

Mrs. Sara Ackerman from Evelyn Raflo

## IN HONOR OF

Norman Steinberger for his kind deeds from Roseline and Douglas Mann

**WISHING A FULL A SPEEDY RECOVERY TO**

Marilyn Woronov from Mr. and Mrs. Bennett Lyons

Herbert (Sonny) Addison from Roseline and Douglas Mann

Blanche Hirschmann from Roseline and Douglas Mann

## IN MEMORY OF

Beatrice Nadge beloved mother of Janet Smith from Mr. and Mrs. Bennett Lyons

Elaine Cohen, mother of Amy Marx, from Ollie and Sam Polk

Julia Rachilison, mother of

Linda Shomstein, from Ellen and Shel Goldstein

Susan Rabinovich's stepmother, from Leonard and Karen Fox

The beloved father of John and Anne Brackus from Jill and Ed Newman

## THANK YOU TO

Chavarah Without Walls for the food donations from JFS

Larry Polsky from Jill and Ed Newman

## HAPPY CHANUKAH TO

Philip Goodman, from the Brett Goodman family

Shirley and Eddie Goodman from the Brett Goodman family

Teri and Mark Moffett, from the Brett Goodman family,

Mr. and Mrs. Howard Cohen, from Ava and Harrison ☆

## Mitzvah Maker Cooks for December 2007

Lil Bienstock, Lynn Edelstein, Lisa Frucht, Resa Goldberg, Audrey Herman, Helen Josephs, Judy Kaufmann, Sheila Kritzer, Barbara Levin, Phil Levine, Jill Newman, Brenda Patten, Bernice Roberts, Carol Shafranck, Fay Sinkoe, Laurie Smith

## Job Seekers Support Group

Temple Israel and Jewish Family Services are co-sponsoring a Job Seekers Support Group.

The next two meetings will be on Thursday, February 21 and March 27, 6-7:30 PM, in the Board Room at Temple Israel.

All members of the Jewish community seeking employment, looking to change jobs, or change careers are invited to attend.

For more information, call JFS, 704-364-6594. ☆

# LEASE EVALUATIONS

PROVIDING PROPERTY MANAGEMENT SERVICES FOR YOUR LEASED PROPERTIES

Some of my services include:

- Assisting in pricing the property
- Advertising in print and online
- Showing property
- Tenant background screening
- Execution of lease
- Collecting and depositing rents
- Full accounting and reporting
- Preparing monthly statements
- Arranging cleaning and repairs
- Acting as a liaison between the landlord and the tenant
- Eviction proceedings, if necessary

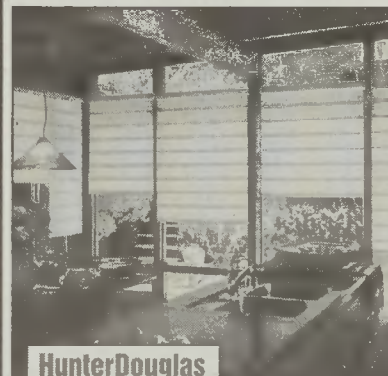
RICHARD ROSKIND  
Realtor, Broker

704-905-6175  
goldroskindhomes.com

## Visit Our 3000 sq. ft. Showroom

# A Shade Above

Window Fashions



HunterDouglas  
Gallery

- ◆ In business since 1984
- ◆ Your destination store for window coverings - shades, blinds, shutters, & top treatments.
- ◆ We offer full-service prices and do-it-yourself prices
- ◆ Experience & explore the Hunter Douglas Gallery

Pick up your copy of "Designing Windows" for creative ideas



Bruce Abramson and Jessica Abramson second and third generation window covering specialists.

## SYCAMORE COMMONS

Located at Hwy. 51 & Independence Blvd., Matthews

www.AShadeAboveCharlotte.com

704-815-3355

A Shade Above  
Window Fashions

Showroom Hours: Mon-Sat 10am-6pm, Sunday & Evenings by appointment