

## Newcomers

### Flo Hersch Arrives from Florida

By Amy Krakovitz

It's difficult to move to a new place after living somewhere for 35 years, but Flo Hersch was ready for a new adventure.

"I moved to Charlotte to live near by son-in-law, daughter, and two delicious grandsons," says Flo. Flo had made her life in Clearwater, FL, where she raised her family and was a teacher. "I have only been here two months," she says. "I'm friendly, but it's difficult finding close friends."

Flo spends several days a week with the Oasis program in the Weinberg Activity Center at the LJCC where she participates in many activities and where she has met many new acquaintances. She has also submitted an application to be a teacher's assistant in the Charlotte-Mecklenburg Schools but, she warns, no job is going to interfere with the time she gets to spend with her very special grandsons.

"I love the weather," Flo says, comparing Florida to North Carolina. She has also joined



Flo Hersch

Temple Beth El where she can be seen participating in Friday night services.

Flo recommends that anyone who moves here jump right in. "Join lots of things," she advises, "and try new activities." She has certainly put herself out there and one can see by her warm smile that she's ready to keep active in her new community. ☆

## Tickets Now On Sale

### Down Home: Jewish Life in North Carolina Documentary Film

The Down Home Documentary Film Debut will be celebrated in a series of gala events across North Carolina. This one-of-a-kind movie relates the remarkable stories of Jewish life in North Carolina from its earliest pioneering settlers to the diverse communities of today. The Down Home film, produced by critically acclaimed historian and author Dr. Steven Channing, will bring this poignant history to life on the screen – you won't want to miss it.

Film premiere gala events are by special invitation only.

The premiere in Charlotte will be on Sunday, February 22. Gala Tickets are \$125 per person. Festivities begin at 5:30 PM, reception at the Levine Museum of the New South. Cocktails and heavy hors d'oeuvres prior to the film screening, special reserved seating at the film showing, champagne and dessert following the film. Meet the key individuals involved in creating the Down Home project before and after the debut. Preferred parking at the venue.

General admission is \$36 per person in advance, \$50 at the door. The film screening is at the ImaginOn McColl Theater. Arrive at 6:45, the film will begin at 7

PM. Open seating at the premiere, champagne and dessert reception following the film. Meet the key individuals involved in creating the Down Home project.



The Down Home project is a three year initiative that involves not only the documentary film but an interactive traveling museum exhibit, curricula for fourth and eighth grade public schools, and a fascinating book by noted historian Dr. Leonard Rogoff.

For more information about the Jewish Heritage Foundation of North Carolina, the Down Home project, to order tickets, or to view a trailer of the documentary film, visit the website at [www.jhfn.org](http://www.jhfn.org).

Underwriters of the project include the State of North Carolina Department of Cultural Resources, The Leon Levine Foundation: Sandra and Leon Levine, Wachovia, and GlaxoSmithKline. ☆

# NEWCOMERS Resources



## Joshua Rubin's Plumbing, LLC

LICENSED - BONDED - INSURED  
COMMERCIAL & RESIDENTIAL

Layouts for slabs - Rough-in and Finish  
Water Heater Repairs and Replacement  
Kitchen/Bath Remodeling

Toilets, Tubs, Faucets, Sink, and Disposal Repairs/Replacement

Josh is a native Charlottean and attended the former  
Charlotte Hebrew Academy

- 10 YEARS EXPERIENCE -

704-517-4918

NC State Lic. #29197

### Are you a newcomer to Charlotte?

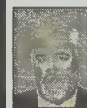
Would you like to be featured in this new and growing section of *The Charlotte Jewish News*?

We are looking for people who have been here less than a year who wouldn't mind answering a few questions and sitting for a photograph.

Please call 704-944-6765 if you or someone you know would like to be our next Newcomer feature family.

### Are you the owner or proprietor of a business that would be of interest to newcomers?

Let them know who and where you are by advertising in the new Newcomer's Resources Guide.



Save twice with Home & Auto Discounts.  
Call me to see how much you could save when you insure your home and car with Allstate.

704-573-1113

Mike Littauer  
704-573-1113  
Charlotte - Matthews - Union County  
[milttauer@allstate.com](mailto:milttauer@allstate.com)



Call for a free quote

Subject to availability and qualifications. The "Clipped Hands" logo is a registered service mark of Allstate Insurance Company Allstate Indemnity Company, Northbrook, IL. © 2007 Allstate Insurance Company.

## Closest Hotel to Shalom Park

### Hampton Inn & Suites

SouthPark at Phillips Place  
704-319-5700 • [www.hamptonsouthpark.com](http://www.hamptonsouthpark.com)



SouthPark's most prestigious hotel. Surrounded by retail shopping, dining, and entertainment venues. Features 124 beautifully decorated guest rooms and suites. We offer special Bridal, Shopping, and Couple's Night Out Packages. Select rooms feature balconies, patios, mini refrigerators, microwaves, whirlpools, and garden bathtubs. Two room suites feature full refrigerators, microwaves, sofa, recliner, end tables, and select suites have a whirlpool spa and fireplace.

**Rebbe Nachman said, "I will take you along a new path – one that is very old, but completely new."**

– Tzaddik #264