

# Mensch 'N Me! New Program for Preschoolers at the Library

The library is beginning a drop-in program for preschoolers once a month. Join us for a variety of activities in the children's library, from stories, to creative movement, to puppet shows, and guests. This series of fun activities is free and open to the community.

When: 11 AM, the first Sunday of every month (with a few exceptions, due to holidays). Join us for the first program Sunday, September 11, when we will have

a Pirate "party" with stories and a treasure hunt.

Who: Preschoolers with a parent (designed for children 2½-5 years old).

Where: Levine-Sklut Judaic Library - Children's Room

Helpful Hint: Great for families with siblings in Religious School.

For more information contact Debby Block at 704-944-6763 or dblock@shalomcharlotte.org. ☆

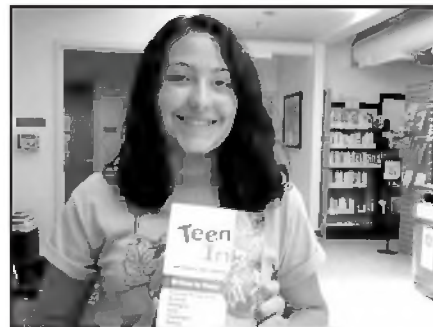


Fun with Miss Debby and friends.

# Did You Know? Fun Facts About Your Library

\* Did you know that LSJL has a terrific collection of Young Adult books? \* Did you know that LSJL has over 500 used books (general and Jewish) for sale?

\* Did you know that offers free coffee and free WiFi? Why drive back and forth when your children are at Religious School? Relax in the library! ☆



Check out the books for teens at LSJL, says volunteer Nicole Perneszi.

## Josh Rubin's Plumbing, LLC



**LICENSED - BONDED - INSURED  
COMMERCIAL & RESIDENTIAL**

Layouts for slabs - Rough-in and Finish  
Water Heater Repairs and Replacement  
Kitchen/Bath Remodeling  
Toilets, Tubs, Faucets, Sink, and Disposal  
Repairs/Replacement

~ 10 YEARS EXPERIENCE ~

NC State Lic. #29197 SC State Lic. #M110508

**704-517-4918**

We acknowledge with gratitude the following donations to the Levine-Sklut Judaic Library. These donations allow us to expand the collection of books, DVDs, CDs, videos, maps, posters, games and various teaching aids. The entire community benefits from these thoughtful gifts.  
*Friends of the Levine-Sklut JLRC Fund*  
Eric Alpert in honor of Edwin Newman

## Women's News

# Hadassah Directory Continues to Serve as the "Jewish White and Yellow Pages"

**Blue Sheets on the Way for 2012**  
As Charlotte's Jewish community continues its steady growth, something else is growing along with it: The annual Charlotte Area Jewish Community Directory celebrates its 65th year.

For more than 60 years, members of the Charlotte chapter of the national Hadassah organization have diligently compiled a free list of names, addresses, and phone numbers of members of the Charlotte area Jewish community. Individuals, families, temples, schools, and other community organizations are listed, as well as the businesses and professionals connected in some way to the fabric of Jewish life in Charlotte.

"We consider this to be a public service," say Judy Kaufmann and Tess Berger who have worked on the directory for several years in their role as Hadassah volunteers. "So many people are moving to the Charlotte region from all over the country and we want to create a strong sense of community through a single resource. It's a great way to stay in touch with friends old and new, and to connect with doctors, lawyers, plumbers, real estate agents, financial advisors - anyone who's a member of our extended Jewish community."

Hadassah's hard work pays off with a resource guide that is considered the most comprehensive of its kind in the U.S. The first edition was published in 1947, and a complete collection of

directories is housed in the Charlotte Jewish Historical Society at the Levine-Sklut Judaic Library. "People tell me that when they're conducting fundraising campaigns and working from agency databases, they'll often get frustrated with inaccurate contact information and instead they'll pick up the directory," Berger says with a chuckle. "I hear all the time that it's the 'Jewish White and Yellow Pages.'"

Beyond its community service component, the directory is a key fundraising tool for Hadassah. Last year's revenue from directory sales, sponsorships and advertising netted more than \$24,000 for medical research programs.

Preparations for each year's directory kick-off in September with a mailing of the now-familiar Blue Sheets to anyone listed in the most recent edition - meaning that the community should be receiving these forms in the mail right about now. "We urge everyone to update their information each year," Kaufmann explains. "We don't want to assume that phone numbers or addresses haven't changed just because we haven't received responses. There's also a 'do-not-list' box for those who prefer not to have their information published."

In case a mailed Blue Sheet is misplaced, or for newcomers to the community, the form can be printed out from Hadassah's website: charlottehadassah.org or the

*(Continued on following page)*

"Chapel in the Oaks"



*Harry and Bryant Co.*  
FUNERAL DIRECTORS

500 Providence Road Telephone 704-332-7133

# CELEBRATING OUR 128th ANNIVERSARY

## FREE CONSULTATION Medicare Supplement And Long Term Care



- What long term care is and why you and your loved ones are at high risk for needing care at home or in a facility.
- Why the limited benefits from Government (Medicare or Medicaid) are not a good choice for your long term care needs.
- At what age should you consider buying long term care insurance. You will be surprised to know why and how buying at a younger age is better for you.
- Compare different Medicare Plans and determine which is best for you.
- Find which company offers the most competitive rates for the plan you want.



**Milton Goldstein, CLTC**  
Certified Long Term Care Specialist  
Charlotte, NC: (704) 442-5618  
Cell: (205) 907-0670  
E-mail: miltgold@bellsouth.net  
Visit my Web Site  
[www.goldsteintc.com](http://www.goldsteintc.com)  
Licensed in 11 States

### Heidi Rotberg Receives the Rosalie Citron Ashendorf Award

On May 2011, during the Installation of Officers, The Charlotte Chapter of Hadassah presented the Rosalie Citron Ashendorf Award, the chapter's most prestigious award, to Heidi Rotberg. Heidi is a past president of our chapter, and has stayed actively involved on our Board. Heidi is always ready, able and willing to pitch in and help where needed. Currently Heidi serves as our Health Chair, Directory advertisement leader and Keeper of the Gate chair. Heidi is a Life Member of Hadassah, a Keeper of the Gate, and the mother of a Life Member (Emily) and Life Associate (David). Heidi's husband Michael is also a Life Associate. ☆