

# Women's Professional Network Opening Event

## Fall Fashion Preview at Belk Southpark

Grab your mothers, daughters, sisters and friends and head over to Belk SouthPark on Tuesday, August 28 to discover the newest fashion tips for fall. For the fifth year in a row, Belk is sponsoring the opening program of the Jewish Federation's Women's Professional Network.

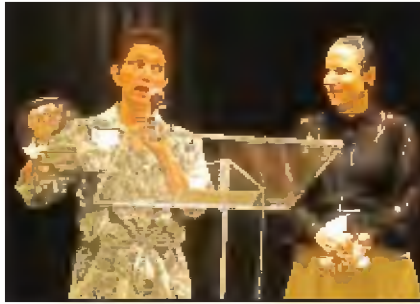
Arlene Goldstein, Vice-President of Fashion Direction and Special Events for Belk, will present fall's best looks including the hottest cosmetic trends of the season.

"Because this is such a great evening, the Women's Professional Network is inviting all women in our community to join us," said Kelly Gaines, WPN Chair. Therefore, all women who support the Jewish Federation Annual Campaign with a minimum household

donation of \$180 are welcome to attend.

The Women's Professional Network offers women the opportunity to engage socially and connect with a cause. The WPN Steering Committee is wrapping up plans for 2012 - 2013 programs. Steering Committee members are Kelly Gaines, chair; Vicki Parker, vice-chair; Jill Balick, Sharon Lachow Blumberg, Lisa Davidson, Fern Ingber Epley, Mindy Kirshbaum, Jenn Koss, Claire Krusch, Laurie Smith, and Alyson Grossman Traw.

A social action alliance between WPN and Shalom Bayit, NC was introduced in November 2011. Creating awareness of domestic abuse in the Jewish community and beyond will continue to be a focus of WPN. Jill Balick,



WPN Chair, Kelly Gaines, with Belk's Arlene Goldstein.

social action liaison between WPN and Shalom Bayit, NC, is pursuing hands-on volunteer projects and awareness programming for the coming year.

To learn more about WPN, please contact Sue Littauer, Development Director at the Jewish Federation: sue.littauer@jewishcharlotte.org or 704-944-6758. ☆



**WPN Opening Event**  
**Fall Fashion Preview**  
**August 28**  
**6-7:30 PM**  
**Belk Southpark**

# Tributes to the 2012 Annual Campaign

The Jewish Federation of Greater Charlotte thanks and acknowledges the following tributes which have been made to the 2012 Annual Campaign from May 7-July 6

In honor of Ira Slomka  
 By Marty and Elaine Schefflin

If you would like to make a Tribute to the Jewish Federation, please contact the Federation office at 704-944-6761. ☆

In honor of Mor Green  
 By Tov M'Od Chavurah

In honor of Esther Kaufman's birthday  
 By Roger and Susan Stiefel

**Luck doesn't buy & sell homes... Experience does!**

Buying... Selling... Relocating...  
 Connecting people to the Jewish Community Since 1972

**Ann Langman**  
 704-367-7240  
 ann.langman@atcmail.com

**GREENSPON & ASSOCIATES**

EMPLOYEE BENEFITS AND PERSONAL & BUSINESS INSURANCE

AN INDEPENDENT BROKERAGE FIRM SERVING THE REGION SINCE 1974  
 Our objective is to find you the most comprehensive plans at the lowest price while providing a high level of service and support.

**SPECIALIZING IN:**

- Life Insurance • Health Insurance • Dental & Vision Insurance
- Disability & Long Term Care Coverage • Annuities • HSA's

Keith Greenspon • Stanley Greenspon  
 704-376-7434  
 www.greenspon.com

**"NEWCOMER SCHMOOZE"**  
 New City, New Friends, New Way of Life

**SUNDAY, AUGUST 26, 2012**  
 11:00 am - 12:00 pm  
**WEINBERG CENTER**  
 at the Levine Jewish Community Center

Learn about the Charlotte Jewish Community while meeting new friends!

Questions???? Call Tair Giudice, 704.944.6759  
 tair.giudice@jewishcharlotte.org or  
 Susan Rubenstein, 704.944.6741, susan.rubenstein@charlottejcc.org.

Sponsored by



**JEWISH LEARNING**  
 DESIGNED FOR YOU

**The Florence Melton Adult Mini-School**

- Learning for pleasure not pressure
- Relates ancient wisdom to modern life
- Dynamic faculty of rabbis and educators from all branches of Judaism
- Unique non-denominational format encouraging dialogue

**"TASTE OF MELTON" INFORMATIONAL SESSIONS**  
 Sample the program everyone is talking about...  
 Sunday, August 12th from 1 to 2 p.m.

**"TASTE OF FOUNDATIONS"**  
 Foundations of Jewish Family Living, our new Jewish Parenting Values Class geared for parents and grandparents of school age children.  
 Sunday, August 19th 11 a.m. to noon

All classes will be held in the Levine-Sklut Judaic Library. Please contact Talli Dippold at 704-944-6780 or Melton@shalomcharlotte.org

New Melton classes starting in August. Partial scholarships and payment plans available.