

Women's Professional Network Opening Event at Belk SouthPark

Women's Professional Network (WPN) co-chair Kelly Gaines welcomed over 90 women to the Jewish Federation's Fourth Annual WPN Opening Event on Tuesday, August 28 sponsored by Belk, Inc.

Kelly introduced the WPN Steering Committee co-chaired by Vicki Parker. Members are: Jill Balick, Sharon Lachow-Blumberg, Lisa Davidson, Fern Ingber Epley, Mindy Kirshbaum, Jenn Koss, Claire Krusch, Laurie Smith, and Alyson Grossman Traw.

Jill Balick, social action chair, talked about WPN's social action initiative with Shalom Bayit- NC, designed to create awareness for domestic abuse. In addition, Jill encouraged members to help WPN recognize Domestic Violence month by bringing "Books, Blankets, and Teddy Bears" to the next meeting which will be held October 25 at Shalom Park. The items will be donated to the Battered Women's Shelter.

Fern Ingber Epley, chair of Women's Philanthropy for the Jewish Federation, introduced Arlene Goldstein, Vice-President of Trend Marketing and Fashion Direction for Belk, Inc. Arlene engaged the audience with her Top Ten Looks for Fall, and introduced Jodi Riley, global make-up artist for Laura Mercier cosmetics. Together they offered make up and fashion tips and took three of WPN's own models from "day to night" by adding accessories and cosmetics. Special thanks go to our three beautiful models: Talli Dippold, Susan Mayo, and Dr. Laura Rosensweig.

The Jewish Federation thanks Arlene Goldstein, Elaina Forbes, Belk Inc., Belk Southpark, and Laura Mercier Cosmetics for the beautiful evening.

The Women's Professional Network offers women the opportunity to engage socially and connect with a cause. WPN is open to all professional



Our models for the evening, Susan Mayo, Talli Dippold, and Laura Rosensweig



Co-chair Kelly Gaines, welcomed over 90 women to the Jewish Federation's 4th Annual WPN Opening Event at Belk Southpark

women who contribute a minimum of \$180 to the Annual Campaign. Guests are welcome to attend an initial program prior to joining.

For more information, please contact Sue Littauer, Development Director, at the Federation office at sue.littauer@jewishcharlotte.org. ☆



WOMEN'S PROFESSIONAL NETWORK UPCOMING EVENTS

Please mark your calendars for our upcoming WPN Programs:

Thursday, October 25: "Art, Heart and Soul"; Sam Lerner Center, Shalom Park.

Thursday, November 29: "No Calorie Fitness Sampler"; Sam Lerner Center, Shalom Park

Thursday, January 10: "Sensory Overload"; Vin Master and Savory Spice Shop at Atherton Mill

Thursday, March 14: 15th Annual Spring Lecture; Temple Beth El

Thursday, April 18: TBD

Luck doesn't buy & sell homes... Experience does!

Buying... Selling... Relocating...
Connecting people to the Jewish Community Since 1972



Ann Langman

704-367-7240

ann.langman@atemail.com



GREENSPON & ASSOCIATES

EMPLOYEE BENEFITS AND PERSONAL & BUSINESS INSURANCE

AN INDEPENDENT BROKERAGE FIRM SERVING THE REGION SINCE 1974

Our objective is to find you the most comprehensive plans at the lowest price while providing a high level of service and support.

SPECIALIZING IN:

- ♦ Life Insurance ♦ Health Insurance ♦ Dental & Vision Insurance
- ♦ Disability & Long Term Care Coverage ♦ Annuities ♦ HSA's

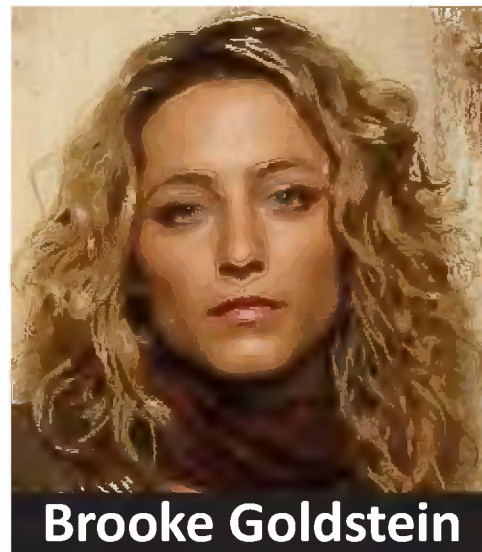
Keith Greenspon • Stanley Greenspon

704-376-7434

www.greenspon.com

Jewish Federation's Impact365 and the Jewish Community Relations Council (JCRC) invite all young adults (ages 21-45) for an eye-opening evening with Brooke Goldstein

NOVEMBER 8



Brooke Goldstein

Human Rights Attorney, Author and Award-Winning Filmmaker

Brooke's award-winning documentary film, "The Making of a Martyr" uncovers the illegal, state-sponsored indoctrination and recruitment of Palestinian children for suicide-homicide attacks.



www.jewishcharlotte.org

SAVE THE DATE