

Your Connection To The Jewish Community



Jeremy Ordan **Matti Ordan-Reider**
 704.609.9300 704.904.7250
 Jeremy.Ordan@AllenTate.com Matti.Ordan@AllenTate.com
TheOrdanReiderGroup.com

MEG D. GOLDSTEIN ATTORNEY-AT-LAW

ESTATE PLANNING,
 ESTATE AND TRUST ADMINISTRATION,
 PRE-MARITAL AGREEMENTS,
 CHARITABLE PLANNING AND ENTITIES,
 GENERAL CORPORATE AND TAX LAW,
 BUSINESS SUCCESSION PLANNING

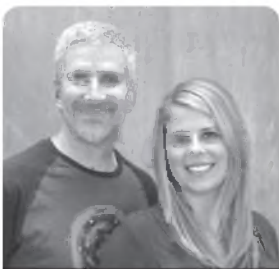
5960 FAIRVIEW ROAD, SUITE 400
 CHARLOTTE, NORTH CAROLINA 28210

TEL: 704.523.2202 ♦ FAX: 704.496.2716

MGOLDSTEIN@MGOLDLAW.COM ♦ WWW.MGOLDLAW.COM

Dr. Scott Menaker, DDS Dr. Tricia Rodney, DDS

- General Dentistry for all Ages
- CEREC Same Day Crowns and Veneers- no temporaries
- Same Day Smile Makeovers
- 3-D X-Ray/Cone Beam Imaging for Implant Planning and Placement
- All aspects of Cosmetic Dentistry and Smile Enhancement Services
- 7:00 AM Appointments Daily
- Multiple Clear Orthodontic Options for simple to complex cases
- Care Credit Financing- 12 month no interest options
- Technologically advanced practice including digital x-rays, imaging, and email and texting communications.
- Experienced caring professionals serving the community since 1985



Scott is a long time community volunteer, leader, and sponsor in the Jewish community since 1985. Both he and Tricia, along with their dental team, volunteer their time and expertise to make a positive impact in our community.

:) CLT
SmileCharlotte.com

New Patients Always Welcome

2711 Randolph Road, Suite 205 Charlotte, NC 28207 704-377-2503

Community News

Annual Community Memorial Service

By Brian Yesowitch, Board President, Hebrew Cemetery Association

“As Jewish people, we don’t tend to dwell on death, but it happens and families experience loss. This cemetery association is the product of nearly one hundred and fifty years of families experiencing loss and then coming together to support each other. That support is the foundation of our Charlotte Jewish community.” These words were spoken by Lisa Blau, a community leader many of you know from her work as a former President of the Charlotte Jewish Preschool and as the Lay Leader for the Bernstein Leadership Group of the Jewish Federation. Lisa shared this thought at our cemetery’s recent Annual Memorial Service and Building Dedication, held the Sunday between the High Holy Days, to illustrate why she and her husband, Barry, named the Hebrew Cemetery Association as one of the Beneficiary Agencies in the Create your Jewish Legacy Program.

Lisa was just one of many speakers that gorgeous fall morning. The cemetery hosted over 350 members and guests, along with a dozen members of our community’s clergy representing seven Charlotte area temples and synagogues. The morning also served as the Grand Opening and Dedication of the cemetery’s Memorial Building.

“Meant to last for generations” were the words of Bill Gorelick, Building and Development Co-Chair who, along with Development Co-Chair Marc Silverman and Building Co-Chair Kevin Levine, put endless months into the preparation and execution of a construction and landscaping plan that has changed the way everyone will experience the Charlotte Hebrew Cemetery. The centerpiece of the Memorial Building is the Great Aron Kodesh (Holy Ark) that was donated by the board and membership of Temple Beth El. The Ark is the focal point of the beautiful Mindy Ellen Levine Chapel, a wonderful new space for smaller funerals. Memorial plaques and donor recognition will adorn its walls.

The Gorelick Family Gathering Room will accommodate family and friends after funerals and unveilings, and may be used for luncheons and meetings. The Ellis and Lena Berlin Family Room is available for pastoral counseling, small meetings, and for families to share some private time before a funeral.

The building has ample service and storage space for our cemetery operations. Well-appointed bathroom facilities are available through an electronic access doorway where members and visitors only need a code to enter.

Visitors to our Annual Memorial Service were struck by how beautiful the appointments, fixtures, and decorations were within each of the building’s rooms. This was all due to the diligence and expertise of Teri Seidman, who was also recognized for her



Sam Kaplan and Lynne Sheffer, far left, with Sam’s children and grandchild, at the Hebrew Cemetery Annual Memorial Service, 5775 (September 28, 2014). Photo courtesy of Silver Stream Creative Group.

contributions to the building at the service.

The building wasn’t the only improvement to our beautiful cemetery grounds. Approaching the Cemetery Building from the circle, one may walk through the Blumenthal Memorial Garden. Its array of beautiful and halakhicly appropriate plants and trees add the right amount of color to the beautifully manicured lawns of our cemetery’s newest sections. Our historic section has long been admired for its abundance of mature trees. Our next stage of planning involves a collaboration with “Trees Charlotte” to expand our arboreal plan into the newer sections of our cemetery. This effort will create more uniformity to the lush look our cemetery visitors appreciate and will add to the dignity and beauty of our beloved institution.

Additionally, visitors to the cemetery can be on the lookout for the Silverman Circle artwork which will welcome visitors to our cemetery for generations to come.

Our Association’s progress on the landscaping, grounds, and Memorial Building is substantial, but you can still do your part. Me-

memorial Plaques which honor a loved one and recognize the donor are available for \$1,000, but pledges and donations of any amount are welcome. You may contact Director Sandra Goldman at director@hebrewcemetery.org or 704-576-1859 for more information.

We’re in the middle of our second year of the Grinspoon Foundation Challenge for the Create Your Jewish Legacy Campaign. We met our first year goal, but need your help to achieve our goal for year two. The paperwork is very easy to fill out – and if you have already made your CJL commitment, it’s easy to add the cemetery to your beneficiary plan. You may contact the FCJC directly or can also go through Sandra to make your plans known.

Membership to the Cemetery Association remains affordable at \$72/year per family. If you have questions for me, I may be reached at byshalomch@gmail.com. Thank you, everyone, for the wonderful feedback you continue to provide as our Association continues to expand and improve. ✨



Hanging the mezuzah on the new Memorial Building. Left to right: Rabbi Yossi Groner, Rabbi Murray Ezring, Brian Yesowitch, cemetery president, and Kevin Levine, former cemetery director and current executive director of the Foundation of Shalom Park. Photo courtesy of Silver Stream Creative Group.

