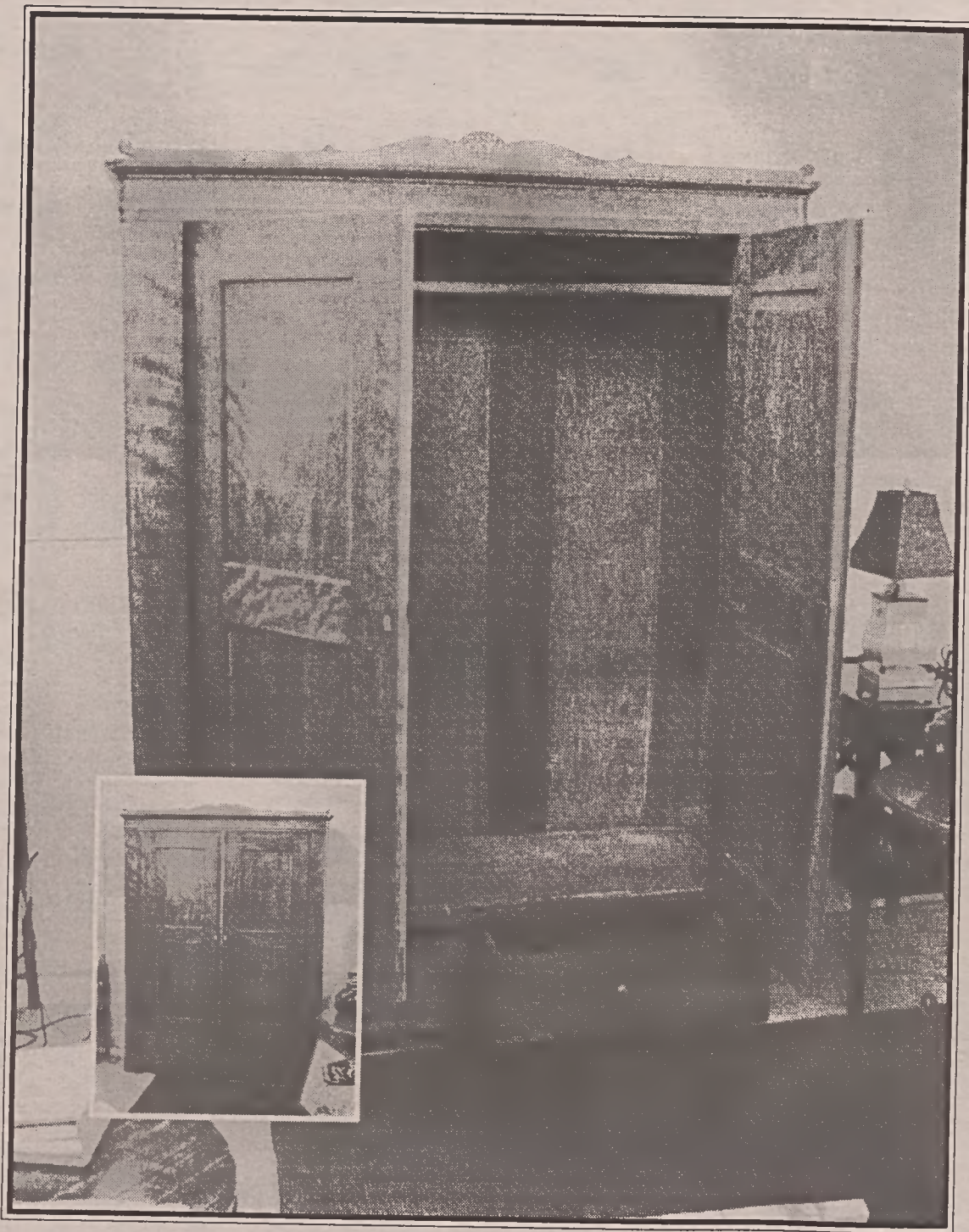


*From fine home furnishings and
antiques to impossible to find gifts...*



American Flame Cherry Armoire

American Cherry Armoire, circa 1860-1870. Flame cherry primary wood; cherry secondary wood; carved bone liner escutcheons. Crest centered by a scallop-outline cartouche carved with tendrils and tulips. Cleverly crafted to break down for transport from town to farm or farm to town. Construction is wood peg and breaks down to the size of a trunk for travel in a horse drawn wagon.

So Very Divan

French, English and American Country

Located in Historic South End at the corner of
Remount & South Boulevard
in the shops at the Old Ink Factory

125 Remount Road ~ Charlotte, NC ~ 704-586-0044

Early American Antiques