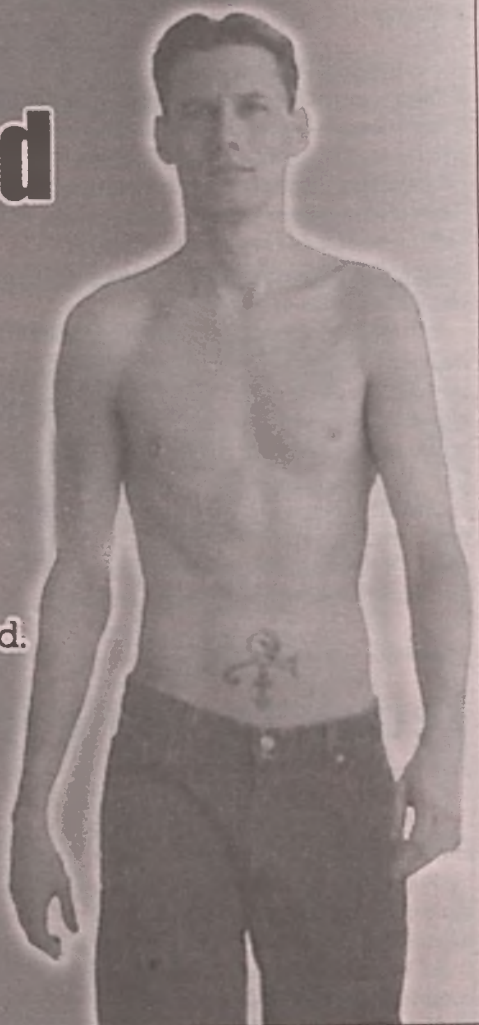


Our 5th Year of Health and Healing

**InTouch
Body Therapy**
a full-service
massage therapy clinic

4037 E. Independence Blvd.
Ste. 100
(The Varnadore Building)
Charlotte, NC 28205
704-566-0120
intouch@carolina.rr.com

David Stout, LMBT
NC Lic. #2204



RESEARCH

LGBT study shows broad support for N.C. gays

Common Sense Foundation releases results of survey

by David Mills

RALEIGH — Would you be surprised to learn that North Carolinians believe in fairness and equality?

You shouldn't be. A study released by the Common Sense Foundation shows that North Carolina residents believe that gay, lesbian and transgender people deserve equal treatment under the law.

Common Sense commissioned a statewide poll to measure North Carolina voters' attitudes toward LGBT issues. The survey found that 73 percent of North Carolinians believe that all state residents should have equal rights under the law regardless of sexual orientation.

Similarly, 57 percent of the respondents in the survey believe that employment discrimination on the basis of sexual orientation is unfair and 69 percent believe housing discrimination on that basis is unfair.

Perhaps most surprisingly, when asked "Do you think it is fair to define marriage in such a way that it excludes same-sex couples?" Fifty-one percent of respondents said "No."

The study examines many issues of interest to the LGBT community, from employment/housing discrimination to same-sex marriage and adoption to HIV/AIDS to transgender issues. The study presents real policy solutions that will help achieve full equality for all state residents.

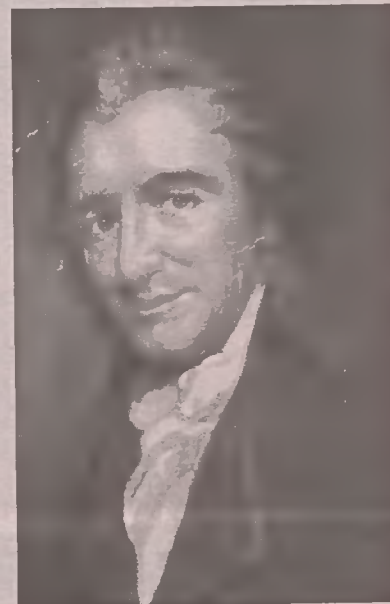
The extreme right has been getting away with murder on this issue for far too long. This survey shows that North Carolinians are not gay-bashers and the study shows how to fix the state's laws to reflect that reality.

About the Common Sense Foundation

Founded in 1994, the Common Sense Foundation is named for the most famous work of Thomas Paine, one of America's earliest progressives. Like Paine, Common Sense is guided by a belief in equality and justice for

all people regardless of race, religious affiliation, sexual orientation or economic status.

Common Sense acts as a center for the progressive movement in North Carolina in many important ways. Among the multiple resources they regularly publish are "Consider This," a regular email update addressing issues of interest to progressive North Carolinians and Common Sense Says, a monthly research report that focuses on a different topic each month. In addition Common Sense publishes special research reports on important



The Common Sense Foundation is named for the most famous work of Thomas Paine, one of America's earliest progressives.

issues and trends in North Carolina.

Common Sense also helps grassroots groups by providing media consulting and advice on how best to reach state policy-makers and serves as a resource for statewide media to balance the conservative viewpoint on key issues.

The Common Sense Foundation is a North Carolina non-partisan public policy organization that believes in equality, equity and justice for all people regardless of race, gender, religious affiliation, sexual orientation or economic status. The organization's primary goal is to ensure that state government and the political process attend to the interrelated economic, political, social and cultural needs of those who are systematically denied access to power. **D**

info: www.common-sense.org

An Enchanting Forest Awaits You.

Developed in the beautiful Blue Ridge Mountains of North Carolina just outside of Boone, you will find a gated community built exclusively for your lifestyle. Build a log cabin or natural wood sided home on a one acre private wooded homesite in a 165 acre mountain development.

Priced from the mid \$50's, our enchanting forest awaits you.

A Gay & Lesbian Community In The Blue Ridge Mountains of North Carolina.

Live Your Lifestyle The Way Others Dream Of Living!

- Beautiful Views
- Gated Community
- Community Oriented
- Clubhouse/Pool/Amenities



- Hiking Trails
- Rolling Streams
- Enchanting Forests
- Natural Surroundings

For More Information, Please Call Us At

336-385-1136
www.carefreecove.com

Life's Focus Home Health & Case Management

- Non-profit agency
- Services for positive people.
- Over 20 years of collective experience.
- Cabarrus, Iredell, Union, Gaston, Mecklenburg Counties.

Do you have a loved one or family member managing HIV/AIDS? We can help with coordination, links or referrals for:

- Transportation assessment
- Housing
- Disability benefits
- Counseling, psychiatric care and support groups
- Obtaining medications
- Community resources
- Transition from correctional institutes to local communities
- HIV testing
- Crisis resolution.

All services and inquires confidential and are provided weekdays, evenings and weekends.

Life's Focus: *Shining Light on Life, One Person at a Time*
LifeFocus@bellsouth.net ~ On-call Line: 704.858.7389

4917 Albemarle Road, Suite 212 ~ Charlotte, NC 28025 ~ Office: 704.531.2466

