

# North Carolina News Notes

from page 10

dates. Make a gift now in support of its 2009 PAC Challenge Reception and it will be matched. Challengers will match all gifts dollar for dollar up to \$12,500 through June 9. The event will be held June 9 at the RBC Plaza, 23rd Floor, 301 Fayetteville St., from 6-8 p.m. One does not have to attend for gifts to be matched.

Special guests will be House Speaker Rep. Joe Hackney, Sen. Julia Boseman and Rep. Rick Glazier.

Pride season is approaching. ENC invites everyone to join us them as they come to local communities. They are in need for volunteers to help staff tables, as well as simply meeting folks to broaden the circle of supporters.

To attend, send an email by June 8 at noon to [kay@equalitync.org](mailto:kay@equalitync.org).

For more information on all ENC initiatives and events, to contribute or to volunteer, visit [equalitync.org](http://equalitync.org).

## Center obtains non-profit status

RALEIGH — The LGBT Center of Raleigh's Board of Directors has announced that it recently received a federal government non-profit status, meaning that contributions made from this point on are income tax deductible.

The board considers this its first big step to embarking on a major fundraising campaign in the coming months, as well as future solicitations in the years ahead.

As a result of this development, the Center is now looking for a volunteer in the accounting field for assistance with the Center's finances. They are specifically seeking a CPA, if possible.

In other news, Early Design Group has been retained to design a new website, which is expected to be up and running shortly.

For more information, email [lgbtcenterofraleigh@gmail.com](mailto:lgbtcenterofraleigh@gmail.com) or visit [raleighiscomingout.com](http://raleighiscomingout.com).

## WESTERN

### Lend a hand

BOONE — High Country Pride is seeking volunteers for its event on June 13-14.

Want to do something meaningful and fun that builds a coalition between the LGBT and area communities? Look no further.

People are needed to assist with tasks such as dance set-up, clean-up, staffing promotional tables and more. All skill levels are welcome.

Proceeds from the two-day event go to support local initiatives.

For more information, email Jennifer at [2009@boonepride.org](mailto:2009@boonepride.org).

## CAMPUS SCENE

### A free cruise or cash?

STATEWIDE — Do you consider your campus to be gay-friendly? Does your campus have work to be done on transgender issues? What does it mean to be an LGBT student, staff or faculty member on your campus? Does the possibility of winning a free RSVP cruise or \$500 sound inviting?

No matter your experience, Campus Pride wants to hear from LGBT students, faculty, staff and administrators. Participation is confidential and data specific to higher education institutions will not be identified in the final analysis.

National trends and experiences from the study will be shared biannually as a way to better understand LGBT needs and render informed decisions on policies, programs and practices impacting LGBT campus life. To be released in 2010, the national report will be compiled in a research summary of findings from Campus Pride titled the "State of Higher Education for LGBT People."

Deadline is June 30.

The National LGBT College Climate Survey is a comprehensive assessment to document annually the experiences of students, faculty, staff and administrators who identify as LGBT at America's colleges and universities. The survey is conducted through the Q Research Institute for Higher Education owned and operated by Campus Pride. The annual assessment examines emerging issues, trends and changing demographics of LGBT people in higher education. The Research Director is Dr. Susan R. Rankin of The Pennsylvania State University and Associate Research Director is Dr. Warren J. Blumenfeld of The Iowa State University.

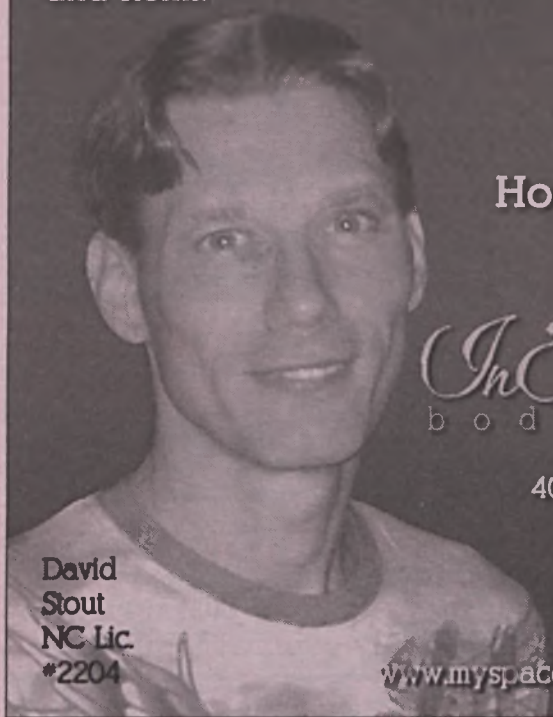
This project is approved by the Office of Research Protections at The Pennsylvania State University.

To participate, visit [www.campuspride.org/research](http://www.campuspride.org/research). For more information, email [info@campuspride.org](mailto:info@campuspride.org).

**info:** Announce your community event in NC News Notes. email: [editor@q-notes.com](mailto:editor@q-notes.com).

*"Feeling good shouldn't have to be a luxury."*

InTouch Body Therapy is a full-service massage therapy clinic specializing in Swedish, Neuromuscular and Hot Stone massage, Reflexology, Acupressure and Reiki.



David Stout  
NC Lic. #2204

*InTouch*  
body therapy

Half hour: \$20  
Hour: \$40  
Hour and a half: \$60

4037 E. Independence Blvd.  
Suite 100  
Charlotte NC 28205  
704-501-6873  
[intouch@carolina.rr.com](mailto:intouch@carolina.rr.com)  
[www.myspace.com/intouchbodytherapy](http://www.myspace.com/intouchbodytherapy)

**Time Out!**

520 8th. Ave. N. Myrtle Beach, S.C.  
P: 843.448.1180

CRUISE PLAY POOL DANCE

Happy Hour 5-8  
Open Daily at 5pm for Cocktails  
Patio Open Weekends

CALENDAR

### Mondays

Knockdown Drag Out!  
Open Drag Contest at 12 Midnight  
Hosted by Morgan Richards

### Wednesdays

Game Night with Bingo & Other Games  
Hosted by Bimbos of the Beach

### Thursday

Customer Appreciation Night  
Free Pool!  
Disco Diva Show at 12 Midnight

### Friday & Saturday

Fri., June 5 - Ieada, The Plus Size Diva and Constance DeMarlow  
Sat., June 6 - Vivian Lee Sheraton, Dance Party  
Fri., June 12 - Brooklyn Dior, Kasey King  
Sat., June 13 - C.L.A.W.S Night with Kiki Merlot  
Fri., June 19 - Tiffany Storm  
Sat., June 20 - Imani Tate, Dance Party

Karaoke Tuesday - 11 pm Karaoke Sunday - 10 pm  
Tuesday, Wednesday, Thursday - No Cover  
(excluding special holidays or events)

THE HOTTEST DANCE MUSIC ON THE BEACH WITH D.J. MACKEL  
For booking information (female impersonators/male dancers)  
contact Ken @ 843.448.1180, 10am-1pm  
[www.timeoutmbsc.com](http://www.timeoutmbsc.com)



## Local Gay Talk Radio

Tune in every Sunday  
10:05AM on Air America



WOIC 1230 AM

Or visit us online to listen:

[www.scpride.org](http://www.scpride.org)