

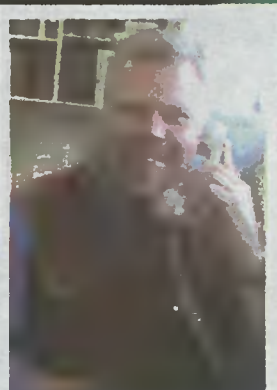
Diversity Always Welcome.

Remarkable People. Remarkable Medicine.



Presbyterian Family Medicine Midtown is a patient-centered medical home where your health is our primary concern. No matter where you are on your life's journey, we are committed to working with you to maintain and improve the quality of your health.

Services include well and sick care for all ages, preventive care, chronic disease management including diabetes, asthma, HIV and transgender medicine.



Rhett Brown, M.D.

Presbyterian FAMILY MEDICINE
MIDTOWN
affiliated with
Novant Medical Group

Location
335 N. Caswell Road
Charlotte, NC 28204

Office Hours
Mon. -Fri., 8:30-4:30 by appointment
Same day appointments are available

Contact
P: 704-384-7980
E: www.pfmmidtown@novanthealth.org
F: 704-384-7985

ELECT Gary Henderson November 6th



North Carolina Central University
School of Law J.D. 1999

Appalachian State University
M.A. and B.A.

Licensed in North & South Carolina

DISTRICT COURT JUDGE

www.ElectHendersonforJudge.com

*Paid for by the Committee to
Elect Gary Henderson for Judge*

**COMMITTED TO
JUSTICE
THAT IS
FIRM
FAIR
RESPECTFUL
TO ALL!**

Professional Experience

2 years Child Support Enforcement Agent
11 years Child Support Enforcement Attorney
13 years fighting for Financial Support
& Stability for Families and Children

Community Involvement

Alpha Phi Alpha Fraternity Inc. (Life Member)
Beta Nu Lambda Foundation (Board of Directors)
Former Volunteer Big Brother/Big Sister Program

A Family Man

Wife and Two Daughters
From a Family of Community Servants



Kim Ratliff

"The Visible Choice"

Mecklenburg County Commission At Large



Paid for by the Kim Ratliff Campaign

Mecklenburg County Commission At Large

Education:

Focused on increased funding to support
our public school system and
reward our teachers.

Jobs:

Committed to progressive collaboration
with national & local industries to
attract job opportunities and career
choices to our County.

Community:

Determined to bring equitable, affordable
healthcare options to County families &
seniors, and keeping our communities
safe places to live & play.

www.kimformeckcounty.com

KimforCountyCommission
 Kim4Commission

Paid for by the Kim Ratliff Campaign