

Opportunities for Men in the Aluminum Plant

THE main purpose of building a dam on the Yadkin River at BADIN, of constructing a large power-house and transmission line, of installing electrical machinery, of building a carbon plant, and finally of building a complete town, was to produce *pig aluminum*.

In the furnace rooms, then, or the "*pot rooms*," as they are called, the actual production of *pig aluminum* takes place.

Aluminum is made by the electrolysis of ore in an electric furnace or pot at a fairly high temperature. The work connected with this process consists in the operation of these pots, and while it is possible for a green man to become a fairly good potman in a short space of time, still it is necessary that a man spend some time in the pot rooms before he can absorb the necessary information to make him a valuable man to the Company. On the other hand, a man coming into our pot rooms who is ambitious, and desires to learn, can climb quite rapidly. As a matter of fact, there is no limit to the height to which a man may climb, provided he puts the proper amount of intelligence and energy into his work. While the process is comparatively old and well established, still we find out new things every day or two, and a man with an inquiring mind will find plenty in this work to keep him from getting into a rut.

We are employing quite a large number of men in our pot rooms, and these men require supervision, so that we are always in need of men who have proved themselves capable of handling other men, and who at the same time are willing to start at the bottom and work up.

The operation of the pot rooms is continuous—twenty-four hours per day, and 365 days in the year—so that the men working in the pot rooms are not in danger of being out of a job, provided they do their work satisfactorily. It gives the Company too much trouble to shut down one of the pot rooms for this to be done unless it is absolutely necessary.

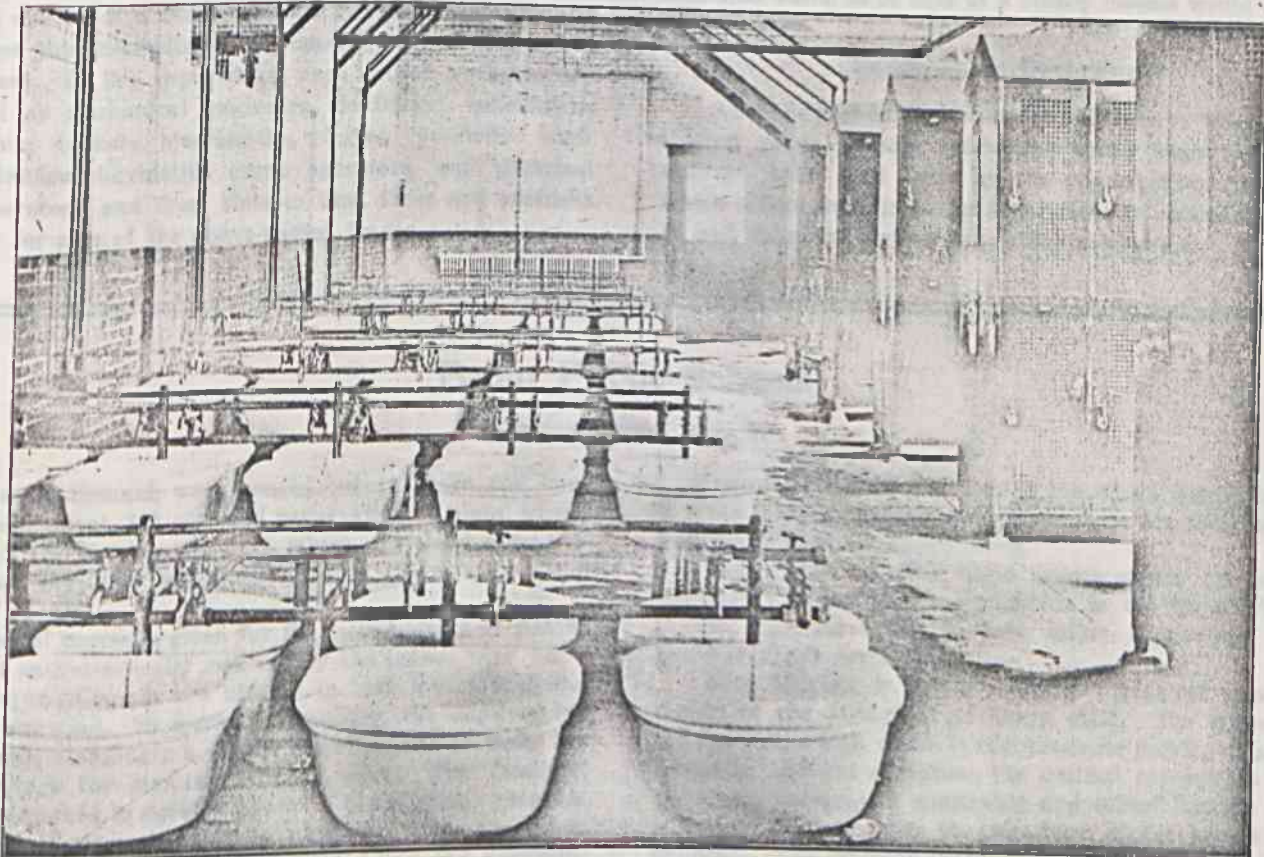
The work is handled in three eight-hour shifts, and while the work is a man's work, still the conditions under which the work is done are sanitary and healthful (see interior view of one of the Company's wash-houses below), and the Company is prepared to take good care of its men.

If in writing the above, I have conveyed to you the following points, I have served my purpose.

- 1st—That pot room work is steady work;
- 2d—That it is interesting work;
- 3d—That the hours are not long, giving the men plenty of time for recreation;

4th—That opportunities for advancement are many.

R. E. PARKS



VIEW OF INTERIOR OF ONE OF THE COMPANY'S WASH-ROOMS