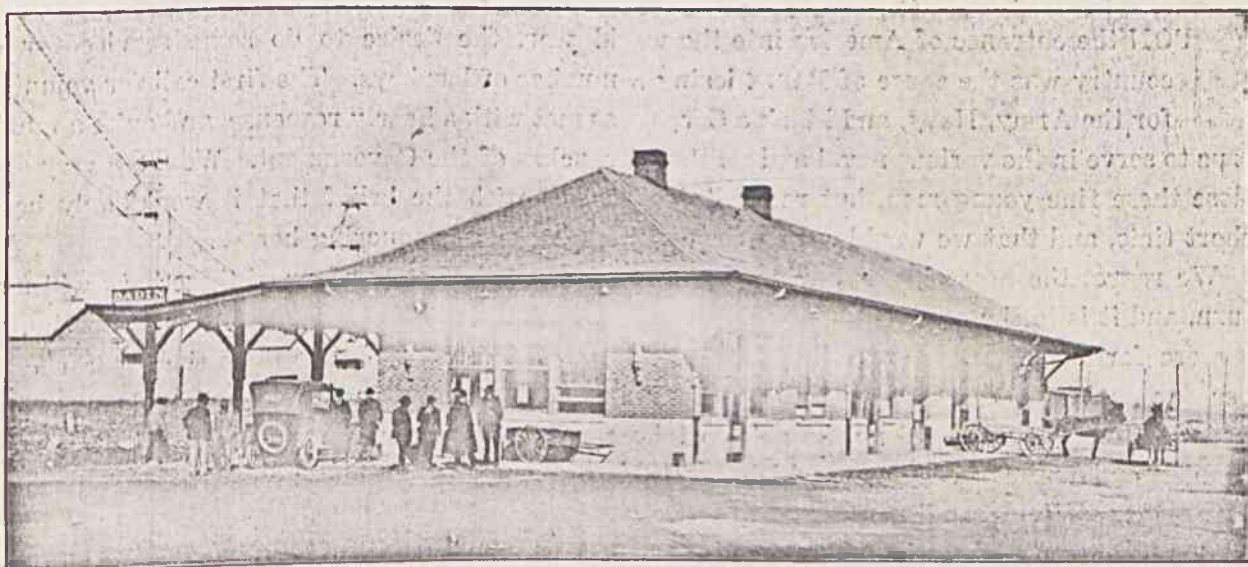


## Badin's Location on the Map

**B**ADIN is in Stanly County, North Carolina; situated on the Winston-Salem Southbound and Southern Railways, thirty-seven miles southeast of Salisbury, and seven miles from Albemarle, the county seat.

The Employment Department of the Tallassee Power Company is constantly receiving numerous letters from almost all parts of the country, asking for information concerning the town of BADIN; and the reason of this booklet is to convey to the minds of those interested, in as intelligent a manner as possible, the various advantages to the working man offered by the town of BADIN and the Tallassee Power Company.

This booklet is devoted largely to the pictorial side of BADIN, the pictures having been selected as representative, so that some idea may be gained of the appearance of the business section, residences, office buildings, amusements, and recreation facilities. Along with these are given various facts and figures, answering briefly some of the questions most frequently asked.



DEPOT AT BADIN, N. C.

While BADIN possesses many qualifications that justify expectations far beyond the enviable position it has already attained, there is still another ambition it is seeking earnestly to gratify—the making of the town a better place in which to live. It is laboring to further all those things that would keep the cost of living at its proper level, broaden and enhance the value of the city markets, provide more and better playgrounds, schools, churches, etc., and in short to create the most desirable civic atmosphere for the family life. The residents of BADIN are very proud of their town. They have not been long in its building—only about three years—but they are sure that their hopes for a still greater and equally as rapid growth will be realized, and this thru the coming of appreciative and home-loving citizens.

If after looking over this booklet you find that you are sufficiently interested, and want to go into the matter further, I will gladly go into it in detail; and should you decide that you desire to become one of us, I will do all in my power to place you in the class of position that you are most fitted for, and will see that you are comfortably located upon your arrival in our town.

Respectfully

J. H. DEVEREAUX

*Employment Manager, Tallassee Power Company*