

to postpone our trip and spend the fall at the Springs.

That metal bonus has caused the men to sit up and take notice. The first day it went into effect caused the largest run ever made. Scraps are in demand now; so, Boys, if you have any scraps left over, you had better sleep on them to save them.

Pot Room news is very scarce this month, and in fact we were not expecting to worry the BULLETIN readers with our "Bull," as Uncle John had promised to give us some dope on first aid this month which will take most of the space allotted to us.

I can't see why Mr. Thorpe should want to go clean to New York to have a tooth extracted, when we have two of the best dentists in the country right here in Badin; but maybe he can explain. You ask him; I am afraid to.

Anyone wishing real nice fat juicy chickens, will do well to see "Jersey" before buying. Now don't ask us where he gets his chickens, for we don't know.

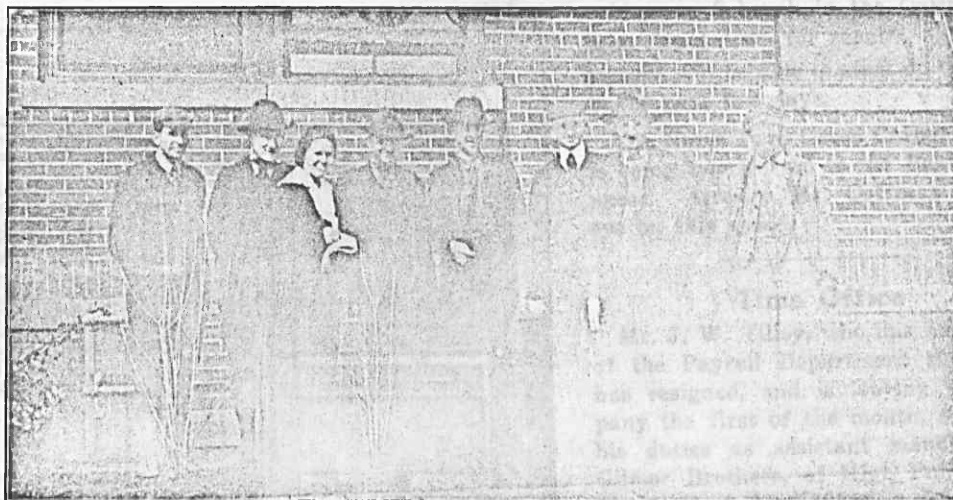
Foreman J. West made a flying trip to Salisbury on the sixteenth instant.

#### *The Perplexities of a Potman*

There's a fact can't be denied,  
After once it has been tried—  
To be a potman has its fascination;  
Though your hands at first are scarred,  
And you swear you've struck it hard,  
On second thought you'll find its valuation.

You can hardly make a step  
Till you hear some potman yelp:  
"Yoe twenty-three on two!"—"Dough-  
ball—that section!"  
And in moving as the rest  
Trying hard to stay abreast,  
You find yourself confronted with perplexion.

It is hard at first to see  
Who your boss man is to be—  
First meter man, head potman next in line;  
Then floor walker comes along  
Gently sings his little song,  
And informs you he may change you any time.



ALUMINUM PLANT EFFICIENCY DEPARTMENT

B. R. Fuller, Supervisor; W. C. Tillery, Assistant; Miss Ruth Kendall, Stenographer; J. P. Green, Clerk; H. D. Huggins, Assistant; C. J. Robinson, Emerson Company, Efficiency Engineer; B. T. Horsfield, in charge of Control Work; Henry ("Dad") Mock, Helper.

When these words from him you hear,  
Your soul is filled with fear,  
After trying hard to render satisfaction,  
In your pants a great big rent—  
In your pocket not a cent,  
And ninety miles from home—Oh, what distraction.

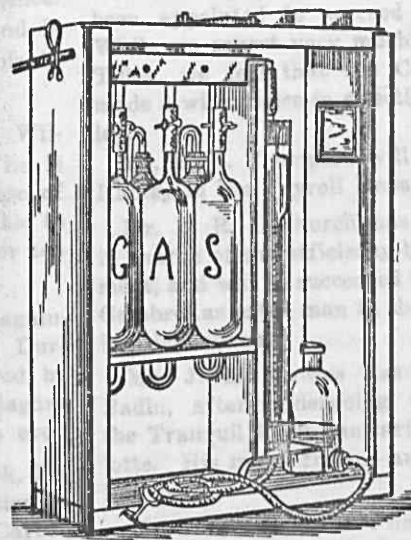
It's invariably the case,  
When a fellow gets in haste,  
To outdo his fellow-man with speed in action,  
He's informed to take it slow,  
Then his work will make more show,  
And will give the boss much greater satisfaction.

But, when you stay three months or more,  
Get your pockets full of dough,  
Learn to do your task to suit just fairly well—  
On your mind there's not a care,  
In your pocket railroad fare,  
You just gently tell the boss to go to Kalamazoo!

—W. O. BURNS

Sam Townsend, colored, who has charge of the Laboratory sampling, has recently taken unto himself a young bride.

## LABORATORY



We note that Spence Kirk visits his parents (?) in Albemarle much more often than he did a few weeks ago.

Truth is stranger than science. It has been found that potassium iodide unites with sulphur under pressure with the following reaction:  $KI + 2S = KISS$ . Care should be taken to perform the experiment in the dark, as

## SHOE REPAIRING

In these times of high prices, keep your eyes on your Shoes, and see that they are kept in good repair. It is real economy.

Our workmen are expert in this business. Your business solicited.

BADIN ELECTRIC SHOE SHOP, Badin, N. C.



## SYMPTOMS OF EYESTRAIN

There are many such, but chief among them are Dizziness, Nervousness, Headaches. If any of these symptoms are yours, we can furnish the glasses that will prove helpful.

F. E. STARNES

Leading Jeweler and Optometrist Albemarle, N. C.