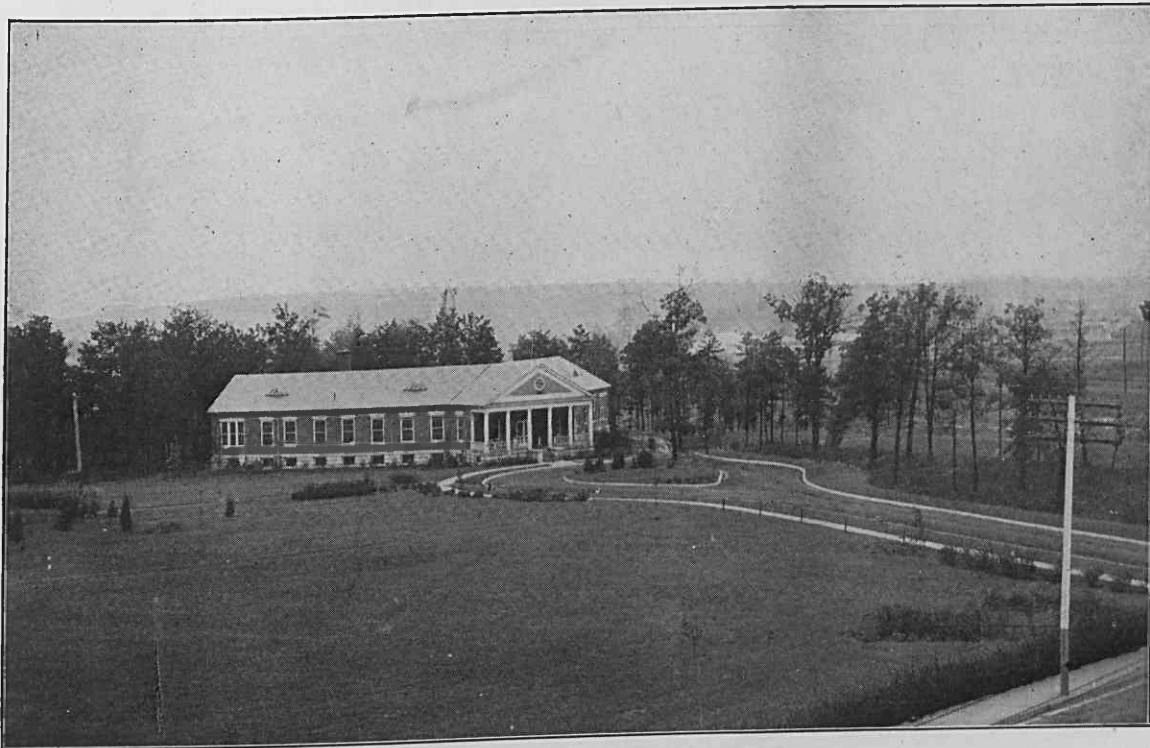


TALLASSEE POWER COMPANY HOSPITAL

THE Tallassee Power Company has built and equipped a modern institution for the care and treatment of the sick and injured of BADIN. The hospital has the capacity of twenty-two beds, and is equipped with all modern appliances. It has an X-ray machine, with fluoroscope and electric cabinet for administering the

and are cool and restful. The sun parlors are bathed in sunshine throughout the day, and resemble a tropical scene in their array of flowers. In the basement, the hospital has its own laundry, operated by electricity.

The sterilizing room is also operated by electricity, and includes hot and cold water sterilizers, basin and instrument



TALLASSEE POWER COMPANY HOSPITAL

different forms of electricity. This machine is complete, and is as good as any in the State.

The operating-room is well lighted, both natural and artificial, and contains everything necessary for a major operation. There is a smaller operating-room, where the minor cases are cared for and ambulatory cases are dressed.

The private rooms and wards for white and colored patients are furnished throughout with sanitary furniture

sterilizers, and an alcove, where the dressings are sterilized under high steam pressure.

The building is located in the middle of a large plot which has been beautified by landscape gardeners. The lawn is large, and dotted with trees, shrubs, and flowers. The Tallassee Power Company has left nothing undone to make this place pleasing to the eye, where the sick may come and find everything that is necessary for their care and treatment.