

OF INTEREST TO WOMEN

CLUB NEWS

PERSONALS

Mr. and Mrs. T. A. Cooper are spending the Christmas holidays in Miami, Florida.

The following girls have returned from Peace College to spend their vacation here: Miss Sarah Bruce McAfee, Miss Hilda Harper, Miss Marjia Longest, and Miss Virginia Dawson.

Miss Hannah Holding has returned to her home in Wake Forest after a visit to Mr. and Mrs. J. D. Robbins at their home on Hill St. Mr. and Mrs. S. E. Valentine are spending Christmas in Miami, Fla.

Mr. and Mrs. B. E. Fountain are spending Christmas in Fountain Inn, S. C., visiting Mrs. Fountain's parents, Mr. and Mrs. Arthur Greene.

Miss Beatrice Tempo is spending Christmas with her parents on Tarboro street. She has been in Baltimore attending college.

Mr. Thomas Canady of Oxford is spending Christmas with his family in Rocky Mount.

Miss Morton To Spend Holidays in Florida

Miss Embra Morton will leave on Thursday for Florida, where she will spend Christmas with friends in St. Petersburg.

Mr. Tillery Removed From Hospital

The many friends of L. F. Tillery will be glad to know that he has sufficiently recovered following a major operation to permit his removal from Park View hospital to the home of Mrs. Henry Edwards on Church Street.

Mr. Tillery's daughter, Mrs. Anne Tillery Renshaw, and Miss Ruth Wakehom are here for a brief visit



COSMETICS BLEND WITH THE MODE'S SMARTEST COLORS

Color harmony is the watchword of smart make-up this season.

Like accessories, make-up must harmonize with one's costume and so intricate has the art of face do become that lipsticks, rouges and powders are designed with an eye on costume colors these days.

The safest way to be sure that your make up is definitely harmonious with your ensemble is to visit your favorite beautician and talk over with her the colors in your wardrobe. Then, let her suggest the best color of lipstick, rouge, nail varnish and powder for your costume make-up.

And don't think for a moment that you will be able to get by with just one set of cosmetics and still be smartly made up. It isn't possible this season. One needs at least three complete sets of make-up in one's beauty kit—two for daytime and one for evening, although two for evening is really better.

The violet, cerise, fuchsia and magenta shades require a rather bright red lipstick and nail varnish with a purplish cast. The browns, beiges, rusts, greens and terra cottas call for a rich clear red without a hint of purple. For evening there are two different types of make-up designed to blend with the after dark colors of the current mode.

Lipstick, rouge and nail polish for wear with petunia shades, purplish blues or to accent black or white should be rather bright and clear, a red verging on the strawberry. For mauve, purplish blues and the cyclamen shades there is an exciting color very similar to the cyclamen flower.

A smart trick of the season is to accent one's nail varnish and lipstick with a matching flower, bit of costume jewelry or an ostrich tip in the hair.

Dickenson Poems Reviewed By Thornton

The publication by G. P. Putnam's Sons of Florence Dickinson Stearns' "Strange Dimension" is no significant event in the world of modern American poetry; and its author has quite definitely "arrived"—so definitely, in fact, that on regrets her debut was not made sooner. A native of Georgia and a second cousin of the one and only Emily Dickinson, Mrs. Stearns now makes her home in Richmond, Virginia.

Certainly not the least noticeable quality exhibited by the verse of Mrs. Stearns is an almost flawless mastery of form—a mastery almost any poet of our day might find it in him to envy. But though her technique is as delicately, as exquisitely chiselled as a marble statue, it is never laboured. Rather, every line she has written seems to pulsate with facility and spontaneity. The author's personal emotions though controlled to a degree remarkable for a woman poet, are yet never made subordinate to anything like cold intellectuality. What though she may pour forth her own sentiments rather less freely than did, for instance, the great Elizabeth Barrett Browning—yet no intelligent being can doubt for one moment that Mrs. Stearns does possess a veritable abundance of purest sentiment, and a soul acutely responsive to beauty in all its forms—and especially, as revealed by some of her lyrics, in Nature. In fact, it is scarcely going too far to say that two or three of the pieces suggest an almost Wordsworthian rapture in the contemplation of the beauty and wonder of Nature.

Unfortunately, space limitations preclude the feasibility of individual mention of all the lyrics unquestionably meriting it. Let it suffice, then, to say that probably the most striking poem in the entire volume is a lyric entitled "Must It Be Always So?" To quote a single stanza of this production will do more to reveal its exquisite lyric beauty than anything a reviewer might say:

Must it be always so that the heart remembers
A thing like the curve of a roal
with the quick day falling,
Or the spire of a dark pine cluster
over embers,
And the wild geese calling?

Special mention must likewise be made of Mrs. Stearns' "Ode to Richmond," where the elements of sentiment and dignity are blended with a firm yet ever-delicate touch. "Step Swiftly, Life" is a small triumph. And the author's sonnets—all constructed after the Elizabethan model—are as swift and refreshing as the very spirit of spring. Moreover, Mrs. Stearns' command of poetic imagery rises considerably above the average. Expressions like "subtracted entity" and "sheer as gossamer" evince a startling originality without, however, savouring of anything like obstructive straining for effect.

All in all, then, it may be said with perfect justice that Florence Dickinson Stearns' "Strange Dimension" marks another momentous step forward in the march of present-day American poetry.

—Nathaniel Macon Thornton.

HOG CHOLERA

Several outbreaks of hog cholera have been reported by Pitt County growers making it necessary for the county agent to vaccinate 329 head of hogs last week.

the very best in instruction and equipment on which to work. The prospective student will find an experienced faculty, well trained in the work they are doing.

COLORED GLASS IS GLAMOROUS

With a number of new colors in plate glass now being introduced by a leading manufacturer, it is possible to carry out the color theme of one's dressing table even to the glass top.

Among new and exquisite colors in which polished plate glass is now available are peach, sapphire blue, grape green and gold. The gold and peach shades lend themselves to particularly glamorous effects.

A dressing table draped in peach and blue becomes even more charming if the glass top repeats one of these colors. A dressing table displayed by a well known New York decorator was draped in gold colored taffeta with ruffles bound in pale green and a mirror top of gold glass with dresser set of green enamel completed an unusually lovely ensemble. The mirror above it was of antique gold with narrow striping of green.

YADKIN CORN

Mrs. R. B. Holcomb of the Enon Community in Yadkin county secured 139½ bushels of corn from two acres where the land had been seeded to lespedeza the year before. The soil had been subsoiled; allowed to stand until mid-winter when it was broken deeply, and was given a coating of barnyard manure. No commercial fertilizer was used.



SMOKERS FIND CAMEL'S COSTLIER TOBACCOS ARE SOOTHING TO THE NERVES

FOR EXPERT BEAUTY SERVICE

VISIT

PRINCESS BEAUTY SALON

SPECIALS

Facial, Shampoo and Finger Wave with Manicure \$1.50
Shampoo and Finger Wave \$.50
Permanent Waves \$2.50 and up.
Vibratory Facial Treatment with Plastic Paste, Removing Blackheads and Refining Large Pores

Princess Beauty Salon

1191-2 Nash Street

Phone 680

Save In Time For 1939

Join Our Christmas Club

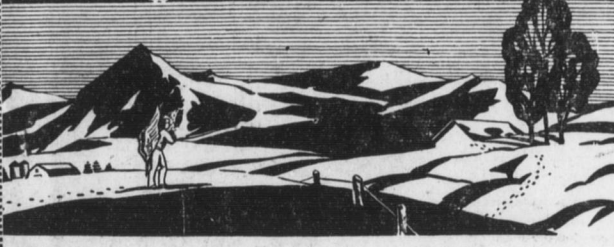
Now Open

Classes 25c to \$20 Weekly

CITY INDUSTRIAL BANK

Member Federal Deposit Insurance Corp.

Merry Christmas 1938



WE APPRECIATED YOUR PATRONAGE IN 1938 AND LOOK FORWARD TO SERVING YOU IN 1939.

Dillon Supply Co.

Rocky Mount,

North Carolina

A VERY HAPPY CHRISTMAS TO YOU



Peop's Bank and Trust Co.

ROCKY MOUNT

NASHVILLE

WHITAKERS

ZEBULON

NORTH CAROLINA

Member Federal Deposit Insurance Corporation.

A Merry Christmas to You All



SAW THREE SHIPS COME SAILING IN ON CHRISTMAS DAY IN THE MORNING.. 1938

IS THE CHRISTMAS WISH FROM OUR ENTIRE PERSONNEL!

Orange Crush Bottling Company

The Fresh Fruit Drink—Pepsi-cola

ROCKY MOUNT, N. C.

1938 1938



YULE GREETINGS

The Entire Personnel of
THE PIKE FRUIT STORE

Wishes you a very Merry
Christmas

and a

Happy New Year

HOLIDAY GOOD CHEER TO ALL 1938



A REMINDER THAT WE APPRECIATE YOUR BUSINESS.

Daughtridge Oil Co.

GASOLINE, MOTOR OILS, KEROSENE AND FUEL OIL

ROCKY MOUNT,

NORTH CAROLINA