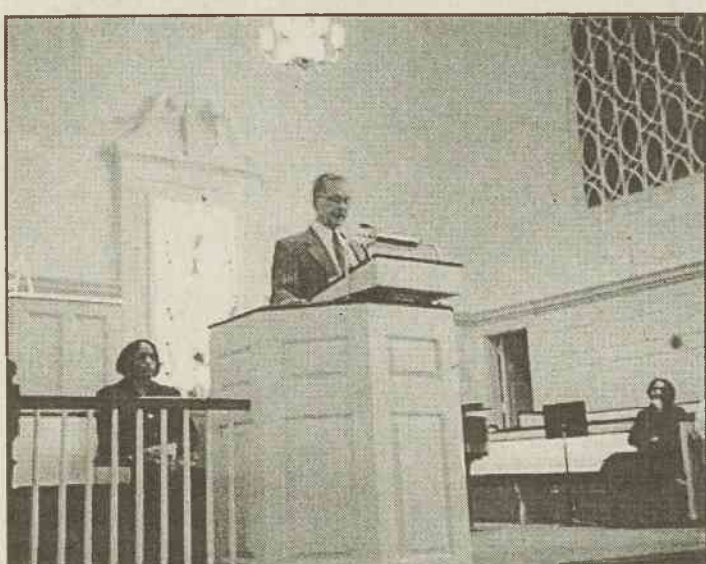


• FEATURES • FEATURES • FEATURES • FEATURES • FEATURES • FEATURES •



Social Awareness ACES of Local Media Days
Bill Howard, former editor of The Carolina Peacemaker, the African-American newspaper in Greensboro, brought the contemporary word about social awareness at the Local Media Days ACES Program. Local Media Days is the annual event sponsored by the Mass Communications, Speech and Theatre Department when media professionals visit mass communication classes. This year the two-day event was Sept. 30 and Oct. 1. Photo by Marie Smith, staff photographer.

ACES panel discussion focuses on Belle activism

BY RUNGANO NYAJEKA
Staff Reporter

The Humanities Divisions and the Ethics Institute/Lyceum Program sponsored, "Bennett Women In the Civil Rights Movement," Sept. 23.

The ACES program was a panel discussion that focused on the history of Bennett Belle activism.

The five panelists -- two NC A&T State University alumni, a history professor from the University of Kentucky, and Bennett professors, Dr. Alma S. Adams and Dr. Linda Brown -- talked about the legacy of Bennett College student activism since 1937.

Louis Brandon, panelist and an NC A&T State University alumnus, discussed the courage of Bennett women who participated in Civil Rights demonstrations including the historic 1960 Woolworth Sit-in.

University of Kentucky professor Daniel Smith said that he plans to create a dramatization of the lives of the four young men who staged the 1960 Woolworth sit-in. Smith, who is also a screenwriter, invited Belles to participate in the film as extras. He told the audience that the film's tentative release date will be some time in February 2000.

The panelists also discussed the Rev. Martin Luther King Jr.'s 1958 address at Bennett College.

An audio tape of King's address, which has been in Bennett's archives, was recently transferred to compact disc. This CD is not yet available to the College community and public. The speech has been scheduled to be played February 1999, the 41st anniversary of King's visit to Bennett. When the CD does become available, copies of it will be sold to raise money for scholarships.

You don't have to know someone really well to give the perfect gift. In fact, you don't have to know them at all.

Please give blood. There's a life to be saved right now.
Call 1 800 GIVE LIFE



American Red Cross

Cone staff conducts 'Real World 101'

BY LAUREN ESTEP
Staff Reporter

The Cone Hall residential staff taught "Real World 101" in a three-part seminar. The seminar was presented to 15 to 30 Cone residents over three days Sept. 21, 22, 24.

During the first seminar, Yolanda Johnson, associate director in the career services department, demonstrated how to complete a job application and how to write a resume.

Johnson distributed materials including mock resumes and profile sheets, which contained information about preparation for job interviews.

"It was a very important and vital program that all students should have participated in," Johnson said.

During the next seminar, Crystal Yubanks, a representative from the Marilyn Modeling Agency in Greensboro, presented "Are You Dressed for Success." Yubanks discussed techniques

about applying makeup. She also provided tips about how to coordinate and how to use the appropriate accessories for career dressing.

At the final seminar, Nicole Seitz, the manager from Four Seasons' Casual Corner discussed a wardrobe guide for career women. She presented the "suit pyramid" the concept of six pieces of clothing -- which include a basic black skirt, blazer and white shirt -- being the minimum to the average career wardrobe.

Point and click your way to fall break

(NAPS)—Fall Break is Oct. 19-20, and you know where you want to go, but you haven't decided how you want to get there.

Taking the Information Superhighway to Greyhound's web site at www.greyhound.com might be the fastest and easiest way.

Want to know what time the bus leaves and where you can catch it?

Go to the fares and schedules page to get the information fast. Here you can pick your departure point and destination from the thousands of location services. The system will then give you all of the schedule options and the fare.

What about the terminal's locations and business hours?

Take a look at the route map for terminal addresses, phone numbers and hours of operation. (The terminal in Greensboro is located at 501 W. Lee St.).

The site also includes information about Greyhound's special advance purchase fares and everyday discounts for college students. Are you planning a cross-country trip home for Thanksgiving Break which is Nov. 25-29?

Take a look at the section on Greyhound's Ameripass, a pass for unlimited travel anywhere Greyhound goes.

Seniors who are planning to graduate in December, are you looking for a fast alternative to get your belongings home at the end of the semester?

Greyhound's web site has that too when you click on the Package Express icon. By just filling out a form with the package's origin, destination and weight, you can find out the cost of sending items that won't fit into your car or your parent's mini van.

And if you can't find the answers using Greyhound's website, an e-mail link to Greyhound's Ticket Information Center is available to answer your questions.

Pheness

Continued from Page 1

Otey said Pheness' commentary will reflect many of the attitudes and opinions often expressed by Bennett Belles.

"Pheness will always be evolving and changing herself, like Bennett Belles generally do," Otey said.

Not only will Pheness be concerned about events and issues in the Bennett College, she will also express opinions about the local community and world news events.

"Pheness also wants to demonstrate that there is a balance between seriousness and fun in her life."

Otey said she derived the name of her character from two major components in her life: Bennett College and her mother. The first four letters "Phen" come from the word phenomenal and the "ess" part comes from her mother's nickname Ress.

"My mother has the type of personality we are all striving to be: strong, supportive, and independent," Otey said.

