



ANNUAL BANQUET IS HELD APRIL 17 BY L. H. C. CLUB

Japanese Playlet, "Tea In Japan," Is Principal Feature of Delightful Program

MR. CHATHAM SPEAKS

The Lucy Hanes Chatham Club of Winston held their annual employer-employee banquet Tuesday night, April 17th, at the Reynolds Grill, with the leader, Miss Claudia Austin in charge of all arrangements.

An attractive Japanese motif was used throughout the banquet and the music and direction of the playlet was under the direction of Mrs. Audrey Clore LeGrand.

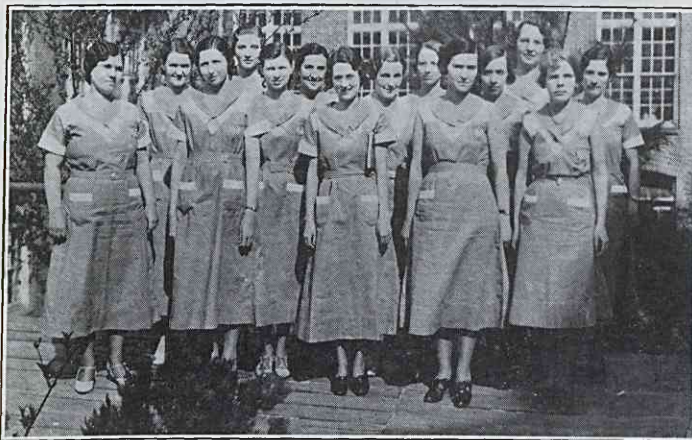
The place cards and programs were clever little Japanese affairs made by members of the art department of the club. The programs were dainty fans in blue and pink, tied with pink and blue ribbons, with a Japanese girl painted on the outside of the fan. Five long banquet tables were used, one being placed across one end of the dining room with the other four arranged T-shape along the side of the speakers' table.

The central decoration on the main table where Mr. Thurmond Chatham, president of Chatham Manufacturing Company, and other officials and officers of the club were seated, was a small Japanese parasol showered with cherry blossoms and resting on a long reflector around the edges of which were arranged wisteria blossoms. The central decoration was flanked with pink candles in three-branched candelabra.

At intervals the length of the tables were lovely bowls and vases filled with cherry blossoms, pink snapdragons and sweet peas intersected with pink tapers in crystal holders. The color scheme of pink and white predominated throughout. Covers were laid for eighty-five, a number of guests being from Elkin.

The invocation was given by Rev. R. Ray Jordon, followed with the address of welcome by Miss Nell Petree. Mrs. Peggy Trotter was toastmistress. Mr. R. W. Harris, superintendent of the Winston mill responded to the welcome address. A toast was given by Miss Vera Briggs, to the officials and visitors and was responded to by

L. H. C. Club No. 2 of Elkin



The above group of young women are members of the L. H. C. Club No. 2, made up of girls that work on the evening shift. The officers of the Club are shown on the front row, reading from left to right: President, Bessie Gilliam; Vice-President, Myrtle Martin; Secretary, Hazel Madison, and Treasurer, Annie Swaim.

A. L. Butler, Secretary-Treasurer of the Company.

Mr. Thurmond Chatham was the principal speaker of the evening and told something of the volume of the sales and the many places throughout the world where the product of the company is sold.

Mrs. Audrey Clore LeGrand sang beautifully, "Come Away", by Katie Ross, with Miss Jean Robinson playing the piano accompaniment. Earline Mayberry gave an interesting reading, "Cherry Blossoms."

The principal feature of the program was a delightful Japanese playlet, "Tea in Japan", which was written by one of the club members, and presented on an improvised stage in the end of the dining room opposite the tables. At the rear of the stage were large Japanese screens draped with graceful sprays of wisteria.

Miss Margaret Taylor, as Lu Sing, was hostess at the tea party, she and her guests all wearing attractive Japanese costumes. Her guests were Miss Versie Whitlock, as Me King; Miss Annie Sutton, as Boo Yu; Miss Gladys Fishel as Ming Toy, and Miss Gypsy Smitherman as Moe Lee.

Tea was served from a dainty Japanese tea service and while at the party Miss Lucy James as "Sue Yu", a guest at the tea, sang "Chinese Lullaby," and "So Long OO Long", with the hostess and guests joining in the chorus of the last song.

This was one of the most alto-

Elkin Wins Over Greyhound Nine

The Chatham baseball team unleashed a ten-run attack in the first inning to gain an early lead and walloped the Greyhound Travelers, of Winston-Salem, in a wild contest here Wednesday by the score of 22 to 8.

The Elkin team hammered three Greyhound hurlers for 19 hits and had things about their own way throughout. The visitors rallied for six runs in the seventh, but could not overcome the big margin piled up by the home team.

Gough led the attack for Elkin with a home run, two triples and two singles in six attempts. Southern, on the mound for Elkin, gave up nine hits, but his support was ragged at times.

Score by innings:	R	H	E
Travelers	001	000	610
Chatham	1041	302	020
			22 19 7

Swaim, Anderson, Strader and Anthony. Southern and Munday.

Every individual is entitled to work, rest and recreation. Life is balanced when all three factors are controlled.

A high moral, intellectual and physical average is more important than a high birth rate.

gether delightful affairs ever given by the ambitious and energetic group of young women.

MUTUAL AID ASSN. IS PROVING BIG AID TO MEMBERS

Generous Offer Held Open Until May 15 to All Chatham Employees

HAS PAID TOTAL \$1,177

The Elkin Mutual Aid Association has now been in active operation for several weeks, and the benefits to be derived by the members in the mill are immediately apparent. As the members who joined in the first drive were exempt from all waiting periods and the usual initiation fee, they were able to take quick advantage of the services afforded by the association. Several employees of the mill have expressed the desire to join, provided they receive the same considerations, and the governing board of the association has very generously extended to all employees who join before May 15th the offer as originally presented. This affords all those who have not as yet become members an opportunity to join and enjoy the immediate benefits offered under the contract.

We could illustrate this article with many examples of just what the association has meant as a money saving means of obtaining the proper medical attention, and we could also cite the many examples of relieved suffering among those members who have received attention which was long past due. So many people realize that there are certain operations, minor or major, which they should have to be entirely well, and yet are not able to undergo, due to lack of funds. Due to the

(Continued On Page Four)

Lucille Harris

Lucille Harris, the infant daughter of Mr. and Mrs. Onie Harris, of Elkin, died during the past week very suddenly. She was ill only a few days, and is survived by her mother and father, and one brother, three older brothers and sisters having preceded her in death. The funeral was conducted by Rev. J. L. Powers of the Chatham Manufacturing Co., with burial in the cemetery of Mt. Herman Baptist church. Mr. Harris has been an employee of the company for many years.