



THOUGHTFULNESS KEY TO SUCCESS

Success Depends On Personal Relations With Patron, Employer And Fellow Employee

Webster defines the word "success" as a favorable end or the result of any undertaking. Have you been successful thus far with your dealings with other men?

Success lies within the individual. If you have learned to live in such a manner as to dissiminate the seeds of happiness, and at the same time enjoy those blessings yourself, you have learned the secret of success.

Success in your work here at the mill depends on your personal relation to those you come in contact with—the patron, the employer, and your fellow employee. Let us consider your relation to the patrons whom you serve. A thoughtful employee will think of those things that tend to help the patron and at the same time materially help his employer.

He will at all times endeavor to hold up the high ideals of his employer realizing the employer is judged largely by the employee.

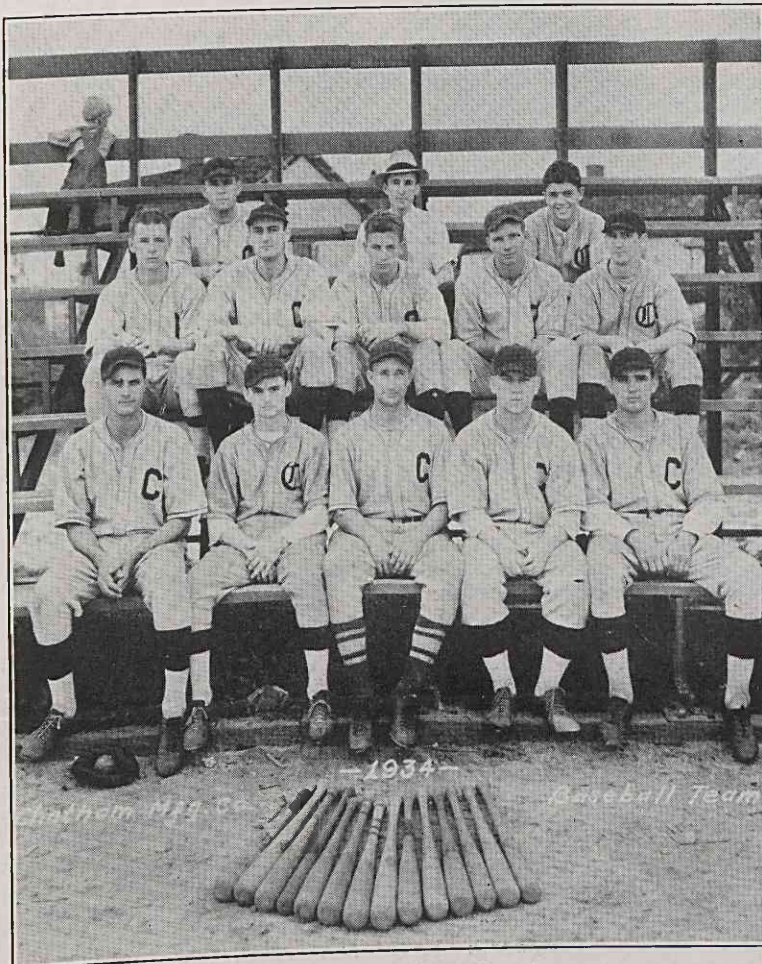
A thoughtful employe will give much thought to his personal appearance. A crease in the trousers, shined shoes, a shave and a haircut will sell more than many arguments. Clean teeth and a smile will often given victory where there has been defeat before.

All the things that go to make up a pleasing personality will be of paramount importance when you go to win the game of life. To make good friends be kind, courteous and friendly at all times. "To have a friend, be a friend."

The thoughtful employe will thoroughly master the work he is assigned to do, and then go on to master all other difficult parts of the business in which he is engaged. Every detail of the business should be mastered.

An employe who wishes to be successful will do the extra work and receive pleasure at the same time, having the satisfaction of knowing he is able to meet any requirements that may demand his services in the future. He thus prepares himself to step into a position of enlarged usefulness and greater personal remuneration. A thoughtful employe will live his personal life with the purpose of giving his best to his employer.

Winston Mill Baseball Team



Front Row, left to right: Sappenfield, outfielder; Gough, short-stop; Anderson, catcher; McIlwee, pitcher; Steelman, pitcher.
Second Row, left to right: Murray, pitcher; Long, outfielder; Darrell, outfielder; Petree, outfielder; Apple, catcher.
Third Row, left to right: Plaster, 2nd base; Bob Hartness, business manager; Dease, 3rd base.

tion in life, the faithful employe must learn to be thoughtful of his fellow employe. The height of success in this world is obtainable through the practical application of the Golden Rule in all relations with fellow employees.

A thoughtful employe will study the problems of his fellow employe and ever be willing to lend a helping hand. He will study the mistakes and failures and through courteous, constructive criticism enable the discharged one to make success of seeming defeat.

A cheerful disposition leads to cheerfulness on the part of others. A smile begets a smile. SMILE.

Couldn't the nations of the world arrange to have football games instead of wars? Better quarrel over gate receipts than war debts.

Charlie Weaver Is Transferred

C. C. Weaver, Jr., who has been connected with the Winston-Salem office for some time, was transferred to the New York office on August 21st.

Mr. Weaver as well as being a good athlete took an active part in all other activities of the mill. He was the capable first baseman of the Winston mill's 1934 baseball team, and his help will be greatly missed during the remainder of the season.

His many friends in Winston-Salem and Elkin wish him much success during his stay in New York.

Oh, yes, the world owes you a living, but you certainly have to hustle to collect it.

PROGRAM IS BIG SUCCESS

Athletic Programs In the Two Plants Have Demonstrated Its Advisability; Interest Shown

The success of the athletic program that has been carried on in the two plants has clearly demonstrated the advisability for such a program. The company has clearly shown its interest and is actively backing up the program in every possible way. There is only one thing else essential to the complete success of this venture and that—100 per cent cooperation of the employees. The interest already evinced by quite a few people is gratifying. However, this number is small compared to the total number on the payroll. Every person employed in the mill will soon have an opportunity to take part in this program.

There is one thing that should be kept in mind at all times by everyone while engaging in the athletic program. That is the equipment is the property of the company and should be treated as such. It is provided for the benefit of the employees and should be made to last as long as possible. To abuse it is to have the privilege of its use withdrawn. During these contests everyone should show the best sportsmanship possible so that team will be a credit to Chatham Manufacturing Company rather than a discredit. There will be times when the breaks may go against you, if this be the case face the situation squarely and play harder so as to offset bad breaks. The teams that play hard and fair usually get the good breaks. This holds true to your everyday life.

Your daily life can be made happier rather than a daily grind, if everyone takes part in these programs who are physically able, they will derive a great benefit from them. Athletic contests will give diversion to the mind as well as exercise to the muscles.

Isn't it queer that a man satisfied with so little in himself, should demand so much in others?

The finest place in the world for criticism is before a bathroom mirror.

Does this new employment insurance protect a man from the danger of having to go to work?