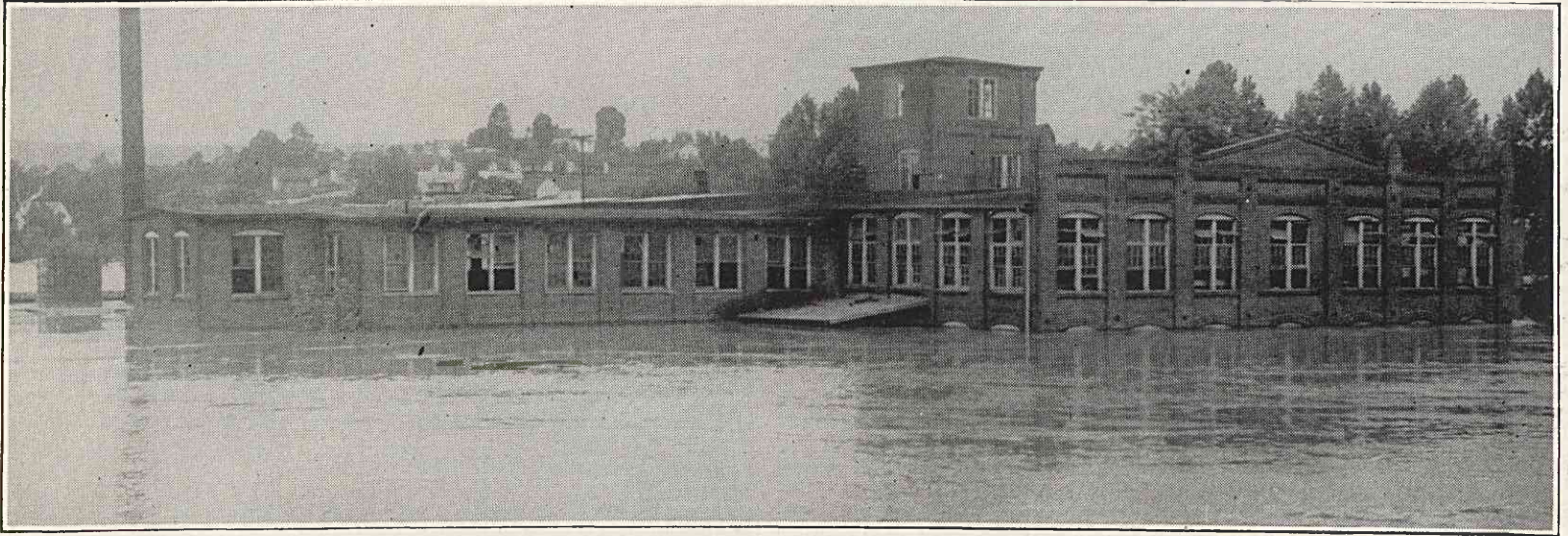




## Old Mill Is Damaged In Record Flood



History repeated itself Wednesday morning, August 14, when the angry Yadkin river came roaring through Elkin to do damage estimated at half a million dollars. July 17, 1916, the flooded waters rose 8 ft. higher than the flood of 1898, and this time it was 18 inches higher than in 1916.

The mill property damage in 1916 amounted to \$100,000.

Eleven two horse wagons were used to move out of the old mill in '16. This time five trucks, with a crew of one hundred men, were used.

Twenty-six houses were swept away in 1916, while this time there was only one dwelling house, that of Zada Payne on the south side of the Yadkin. However, the homes of Luther Hemric, Lum Shores, Albert Castevens, Dewey Rash and Miss Laura Masten were damaged considerably. Several of the employees who had farms along the river and creek bottoms were completely wiped out.

The Scouring and Carbonizing departments (old mill) were under water to the fourth floor. The crew started moving wool at three o'clock in the morning and with the assistance of the CCC boys soon had the wool and as much machinery as possible moved into a safe place. Wool was moved from the lower warehouse on Main street and piled on the lawn of Mrs. Rich Chatham's home. The old shoe factory warehouse, which contained cotton and wool, was damaged considerably due to the rising Elk Creek and the washing out of a dam above the shoe factory.

A large oil tank floated down



The Scouring and Carbonizing Plant (old mill) has seen water like this before, but the flood rose higher than in 1916. When this picture was taken the flood had not reached its highest point, going about a foot higher than is shown. Lower photo was made looking east on East Main street. So rapidly did the water rise the operators of the two gasoline stations were caught napping. The smoke stack and part of the old mill can be seen in background at extreme right.

the river and lodged against the ball park. It came in contact with a live wire, exploded and burned to the ground the new baseball park, grandstand, bath house and lockers. The damage was estimated at \$4,000.

The town of Elkin's loss was estimated at one-half million dollars.

The flood reached its crest around noon Wednesday. However, the water did not recede so that people could get across the

Elk creek to West Elkin until around five o'clock. Traffic was held up across the Hugh Chatham Memorial bridge for five hours, due to five large tanks

(Continued on Page Six)