

Gardeners Direct Efforts Toward Festival

Classifications And Rules For Harvest Festival

RULES

1. All exhibits entered must be grown by employees (and, or members of their immediate household.) An exception is made in the case of canned peaches since peaches do not thrive in this vicinity.

2. Peaches not grown by the exhibitor and entered in the canned goods division must be purchased in the raw state and fully prepared by the exhibitor.

3. All exhibits entered in the Harvest Festival must have been canned and grown during the 1947 season.

4. All canned goods exhibited must be canned by an employee or a member of his or her family.

5. Entries must be received at the company cafeteria not later than Thursday, September 4th, at midnight.

6. Exhibitors may make only one entry in each classification.

7. Exhibitors are urged to present a list of entries to the Personnel office well in advance. Labels will be typed and held until exhibits are presented for showing.

8. If there are three or fewer exhibits in any one classification, judges will use discretion in awarding prizes.

9. Judges' decision will be accepted as final.

10. Owner must claim and remove displays between midnight Friday, September 5th, and 4:30 p. m., Saturday, September 6th. Prize ribbons will be removed with the displays.

11. Cash prizes may be called for at the judges' booth in the Cafeteria, between 4:00 p. m. and 8:00 p. m. Friday, September 6th, or afterward at the Personnel office.

12. Display plates for fresh vegetables will be loaned to exhibitors for flower arrangements.

CLASSIFICATIONS

Fresh Fruits And Vegetables

Apples, (any variety) plate of five; green beans, one plate; lima beans, one plate; beets, bunch of five; cabbage, one head, trimmed for market; carrots, bunch of five; corn, tallest stalk; field corn, five ears; cucumbers (slicing) plate of five; grapes (any variety), best plate; greens, one plate; okra, plate of five; onions, plate of five; pears (any variety), plate of five; potatoes, Green Mountain, plate of five; Irish Cobbler potatoes, plate of five; Sequoia, plate of five; pumpkin, largest; pumpkin, best specimen; rhubarb, five stalks; squash, plate of five; sweet potatoes, plate of five; tomatoes, red, plate of five; tomatoes, yellow, plate of five.

Canned Fruits And Vegetables Division

Apples; apple butter; apple cider; apple jelly; apple sauce; asparagus; baby beets; beans, lima; blackberries; blackberry jam; blackberry jelly; carrots, catsup; cherries; chili sauce; corn, cream style; corn, on the cob; corn, whole grain; grape jam; grape jelly; grape juice; huckleberries; mint jelly; okra; onions; peaches; peach preserves; peaches, pickled; pears; pear preserves; peas, field; peas, green; pickles, bread and butter; pickles, dill; pickles, green tomato;

Big Annual Event To Be Held Sept. 5 In Cafeteria; Almost \$1,000 In Prizes

Sweepstakes Awards To Be Given Again This Year; Three Divisions

July and August are mighty important months in everyone's gardening and canning programs. Climaxing these busy days, of course, is the big Harvest Festival in the cafeteria, Friday, September 5, a date that can very easily slip up on all of us unless we circle it on our calendars. Those who do remember this date and prepare for it accordingly, will be among those to share in the merchandise and cash prizes amounting to almost \$1,000.

Remember, there will be three classes: Fresh Fruits and Vegetables, Canned Fruits and Vegetables, and Flowers. The Festival will be conducted along the same lines as last year with many prizes going to the winners in the various classifications. In addition to these, there will be valuable sweepstakes prize for winners of each division and a grand sweepstakes prize for the winner of the highest number of points in the show. Entries must be received in the cafeteria not later

than midnight, September 4th. The special sweepstakes prizes will be announced in the August issue of The Echo and as soon as the prizes arrive they will be put on display in the cafeteria. Last year the grand sweepstakes prize was an electric refrigerator, with many other valuable prizes going to the runners-up.

There will also be prizes for the exhibitor having the largest, the second largest, and the third largest number of items entered in the Festival, regardless of whether or not prizes are taken in any individual classification. Three awards will also be presented to the three entrants having the best individual displays.

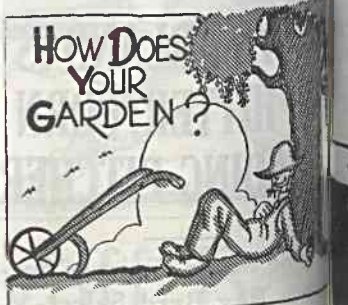
A full evening of entertainment is being planned in connection with the Festival.

Square Dance Team And String Band In Folk Festival

The Ecusta Square Dance team and String band is participating in the 20th annual Asheville Mountain dance and folk festival which is being held in the City auditorium this week end.

The unique event has again attracted participants from several states. The total number taking part is expected to exceed six hundred. Ecusta participated in the Festival last year.

The Ecusta performers are also expected to take part in the Labor day festivities at Canton again this year. The local team won first place there last fall and tied with Enka at the Western North Carolina Fair in Hendersonville.



By BOB BOLT

"Once more the liberal year
laughs out
O'er richer stores than gems
gold;
Once more with harvest-song
shout
Is nature's bloodless triumph
told."

—John Greenleaf Whitcomb

And once more our Annual Harvest Festival draws near! And gardeners and housewives are harvesting and putting away winter stores. Home food production provides the homemaker a splendid opportunity to improve her family's diet and to add appeal and taste appeal to the family's meals. Too many families do not eat enough fruits and vegetables for good health. By preserving part of the summer's abundance from home and commercial production the homemaker can be better assured of an adequate year-round supply of fruits and vegetables for her family. Indications point to an abundant crop of fruits and vegetables this year. Take advantage of this.

Many of you who feel that you don't have a chance to win a prize are hesitant about entering our Harvest Festival. Let me remind you now that the sweepstakes prizes are not the only prizes. Each winning entrant receives a cash prize also. And with a few entries might be awarded for their efforts. So don't on in because "it's not the winning that counts, but how you played the game."

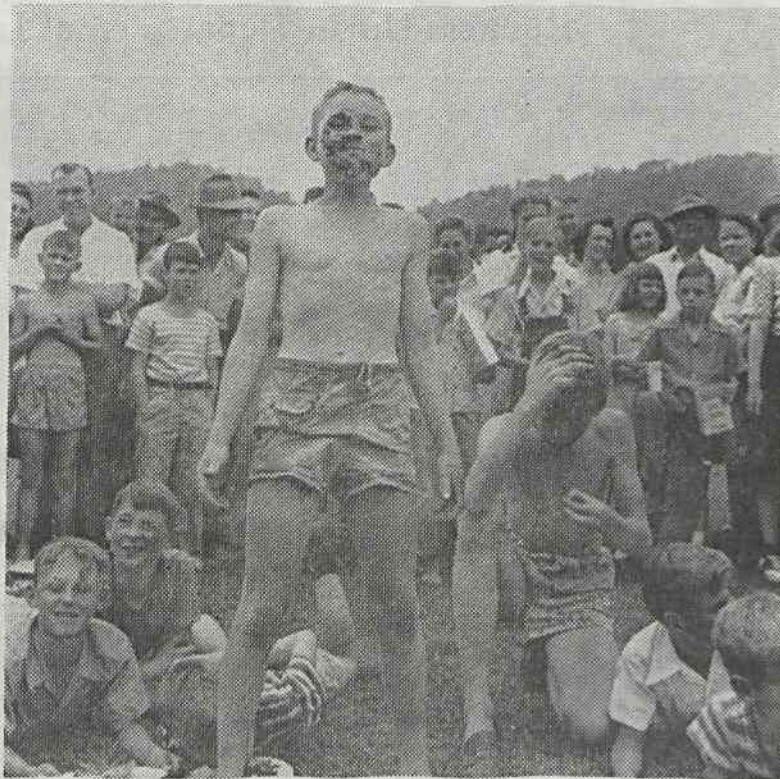
Here are a few pointers for preparing your entries:

In selecting fruits and vegetables for the show-bench, remember these factors: Proper size (it is always the largest that wins), good quality, maturity and freedom from blemishes, uniformity in shape, and color, and trueness of type. Exhibit those you would buy yourself if you were shopping for them.

Exhibits in a flower show should represent as near to cultural perfection as possible for the exhibitor to attain. Flowers and foliage should be free of any insect or disease injury. The flowers should be at the top of development, foliage of a good color and good texture. Avoid crowding and arrange so that bruising and damage is avoided. Mere size in a flower is not a criterion for culture or good selection for a show. Remember quality, condition, uniformity, and trueness of type.

In selecting your entries for canned fruits and vegetables, remember that they are judged chiefly by appearance. Consider the product, its color, size and shape, condition, and arrangement. The clearness of the liquid and fullness of pack or proportion of liquid to product are of equal value in the scoring. The jar or container should be of appropriate size and shape for the product. May the best can win!

Pie Eaters' Paradise



There's no contest at the annual picnic that affords more fun to spectators and participants alike as does the pie-eating contest. Naturally, no pie is as "colorful" for such a contest as is berry pie, so that's what is used. The boy in the center above seems to be enjoying both the pie and the contest while the other fellow is not so sure he is enjoying either. He looks like he has had too much!