

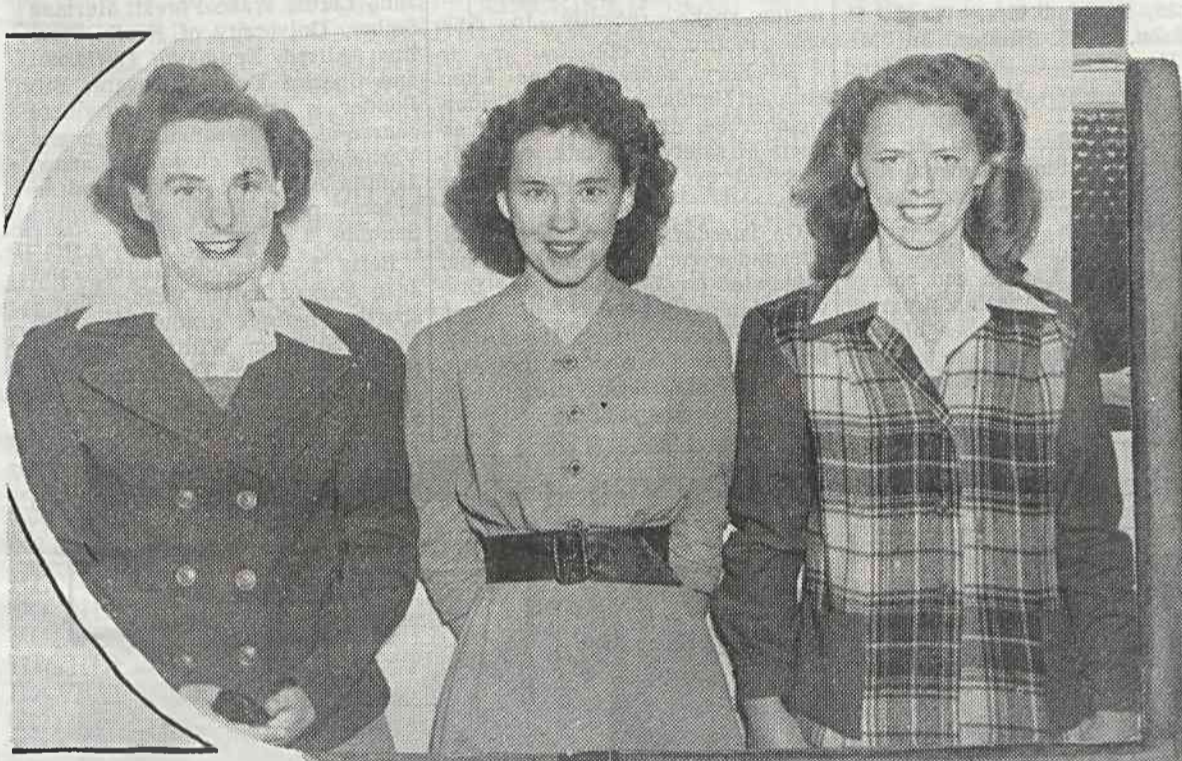
Names Mean A Lot In Endless Belt!



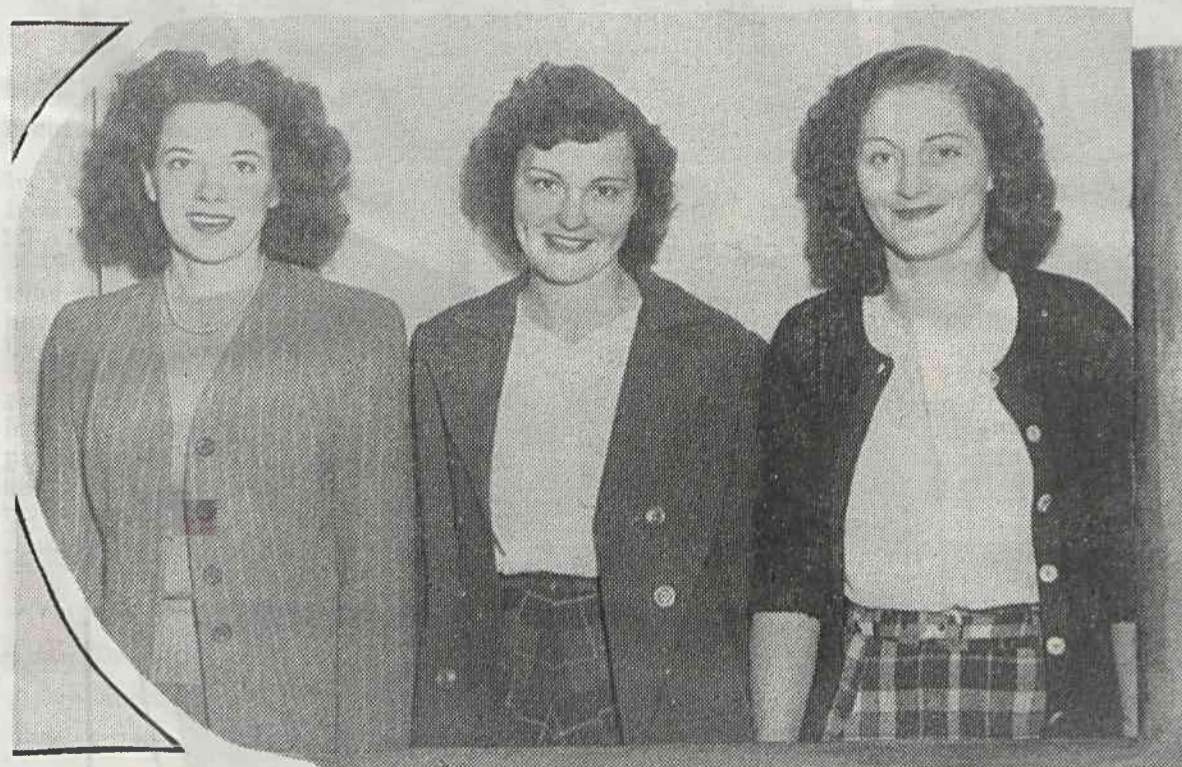
ESSIE — MARIE — FAY — OPAL

Whitmire seems to be a popular name in this section of the state, and especially is it popular on the first shift at Endless Belt where no less than four of the clan work.

If the girls are musically-inclined, all they need now is a good pianist. Of course, the pianist's name would have to be Whitmire. No other name would do!



RUBY RIGDON — RUBY WINCHESTER — AND RUBY WHITE



RUBY KING — RUBY WALDROP — RUBY HEATON

It probably wouldn't happen again in a hundred years, but when Endless Belt added a second shift this summer, six Rubys were employed to fill jobs on that shift.

A glance into the dictionary to trace the origin of the word ruby brings this statement: "The most beautiful rubies come from Ceylon, India, and China." We disagree!

A CALL FOR RUBY GETS 6 ANSWERS IN ENDLESS BELT

Four Whitmires Will Also Answer In Department Where Name Means A Lot

What's in a name? Plenty, especially if the name is Ruby and she is on second shift in Endless Belt or if it's Whitmire on the first shift in the same department.

A call for Ruby would bring six responses—Waldrop, Heaton, King, White, Winchester, and Rigdon, while the Whitmires are Faye, Essie, Marie, and Opal. It's a little unusual for so many folks in the same department on the same shift to have names alike, so we asked the girls to give out with their best smile for an Echo picture.

Opal has been here longer than any of the Whitmire group, since October 10, 1943. Faye, who is the wife of Henry in the Cafeteria, came April 10, 1944 while Essie and Marie came in 1946, August 12 and March 25, respectively.

All of the Rubys came in mid-summer of this year when the second shift at Endless Belt was added.

Interesting Facts Are Given About Davidson River

By ANDREW HARRELL

Since many of you probably noticed the low rate of flow of Davidson River during the weeks before the rains came, these facts and figures should be of interest.

The level of the river varies from less than half a foot to the maximum of 11.9 feet.

Our water shed is entirely in the Pisgah National Forest, being joined by Ecusta property, eliminating all possibility of contamination or pollution of its waters. The water shed covers an area of 40.4 square miles and for each inch of rainfall a total of 700 million gallons of water is collected here. The run-off is about 56% leaving a 35% absorption to the forest vegetation and springs and feeders to the river.

The greatest rainfall recorded here for any year since 1933 was 79.91 inches in 1936. The average rainfall for 13 years has been 61.3 inches.

Since Ecusta was established here the greatest yearly rainfall was 74.48 inches in 1942. The lowest was 44.34 in 1941. The greatest rainfall measured in one hour was 2.64 inches. The greatest 24 hour measurement was 8.51 inches. The greatest snowfall measured was 14 inches which fell on March 2, 1941.

Where do these records come from? Did you ever notice the small house just above the bridge and below Mr. Bennett's garden? That is the gauging station for the river's depth and flow. This is checked daily by the Filter plant personnel. Also at the Filter Plant is a sub-weather bureau checking station. Here we record daily rainfall and snowfall, temperatures, relative humidity, wind directions, and other pertinent weather data.

John Smithers was explaining why he always got up for a lady standing in a bus. Said he: "Ever since I was a kid I've had a lot of respect for a woman with a strap in her hand."