
number 9

IN OPERATION

Big No. 9—a sleek, handsome machine—is rolling steadily these days and nights and even though it is the infant of our cigarette paper machine family, it is producing favorably with the other eight members of the family.

In many industries, the addition of a new machine is an everyday occurrence and hence not much attention is accorded its installation. In the paper industry however, where a comparatively few machines are engaged in the final production of the paper, the addition of a new paper machine is news.

No. 9 is located in the old pre-washer building and while somewhat separated from the

other machines is not asking any favors as evidenced by her steady production record.

In many respects, No. 9 is just like our other machines; that is, from a technical standpoint. It incorporates all the refinements and improvements that we have developed in our experience with our other machines.

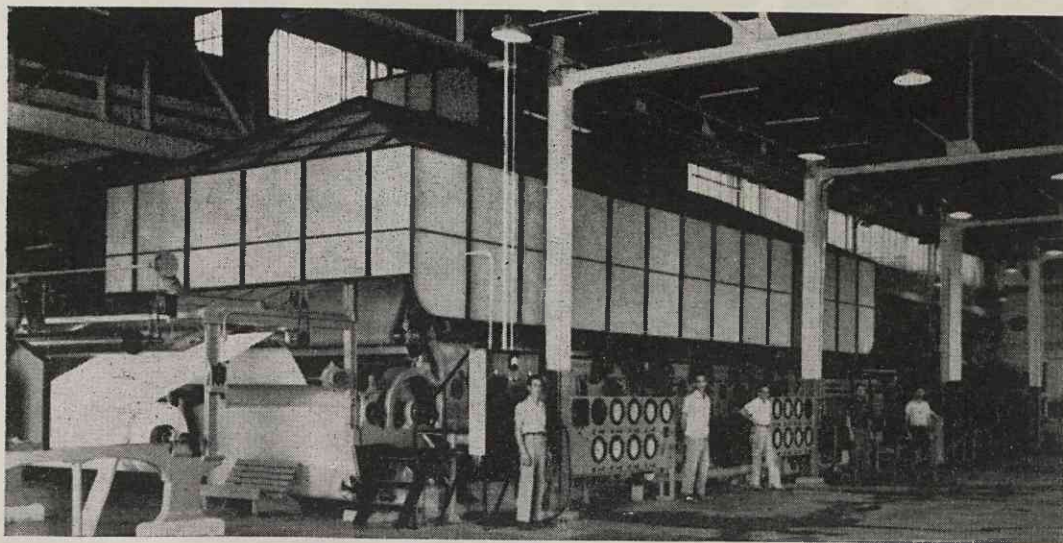
But, it differs largely in that our own men designed, assembled, and installed the machine with a minimum of help from outside sources. Our own staff had a much greater part in the construction of No. 9 than in the other eight machines.

In installing No. 9 our men can step up and take some well-deserved recognition for a

splendid job. Of course, the road has not been an easy one, but by working as a team, our men have chalked up another noteworthy performance. One section of the machine known as the inlet was completely designed here. The inlet feeds the stock onto the wire and is a very important part of the machine. The inlet on No. 9 is in some ways different from the inlets on the other machines.

The first machine—No. 4—went into production on August 23, 1939, and was followed by three more machines that year. No. 3 made its first paper on October 16, 1939 and two days later No. 2 was in production. No. 1 started on November 10 of that year.

No more machines were started until 1941 when four more began rolling. No. 5 started July 18, 1941 and on July 30, No. 6 began turning out the rolls of paper. On September 6, 1941, No. 7 was started and on October 12, 1941, No. 8 was put into operation. There were no additions during the war years, of course.



Our Newest Paper Machine Rolls Along

Big No. 9, with five of the men who are familiar with the operation of the big beauty, is shown in the above photograph.