

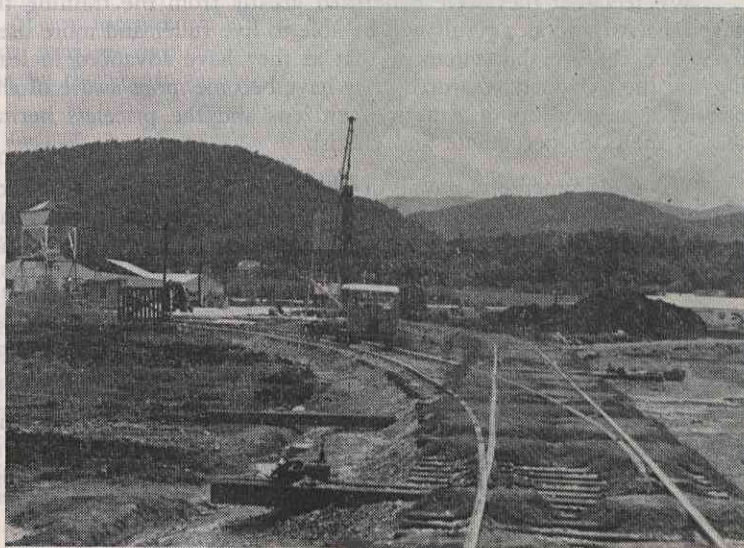


Above, left: Shown in the picture is the MacArthur Pile Driving Rig which is a patented cast-in-place concrete foundation pile. A steel mandrel of the desired piling diameter is driven into the ground by steam hammer until proper loading conditions are secured. The mandrel is then withdrawn and freshly mixed concrete poured into the hole made by the mandrel.

Above, right: A MODERN AGGREGATE BATCHING MACHINE which is erected to work in conjunction with the central concrete mixing plant. Coarse and fine aggregate are scientifically measured by weight and volume before being fed to the concrete mixer, thus assuring finished concrete of the proper design and strength characteristics. About 10,000 cubic yards of concrete will be used in the new plant.

At right: VIEW OF PERMANENT RAILROAD SPURS LEADING FROM THE SOUTHERN RAILWAY TRACKS —

Three standard spurs will serve the Cellophane area. Because of poor sub-soil conditions, excavations as deep as 5 feet in places was necessary in order to get a firm foundation.



Nicholas
High School, Mary
College; Ella Jen
er—Bowen High School; and
Ann DeBord—Brevard College.