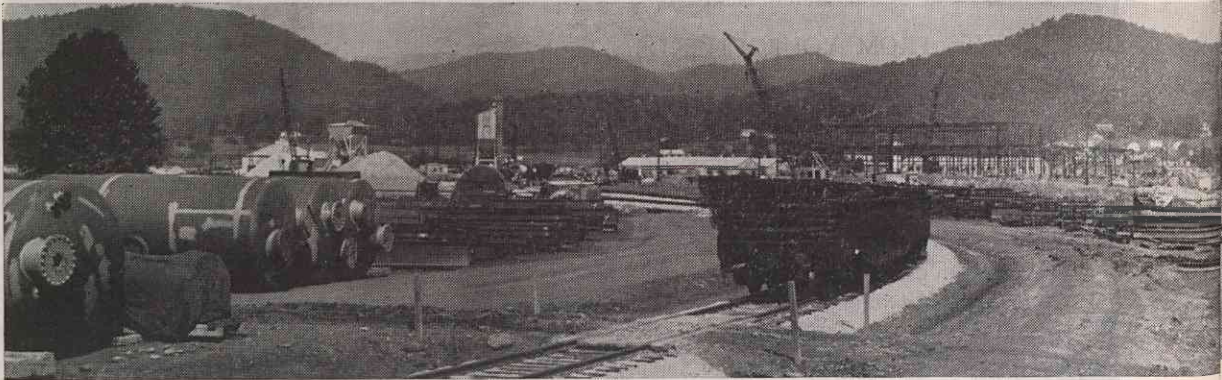


CELLOPHANE

AS REPORTED BY OUR
KNOTHOLE SUPERINTENDENT



Above: View of one of the railroad spurs. Tanks in left foreground are absorbers for coating solvent recovery.

Jumbos lay the equivalent wall area of $13\frac{1}{2}$ standard size brick.

Below, left: Starting the brickwork on the east wall of the casting room. Note that "Jumbo" size brick is used in place of "standard" size. Three

Below, right: Safety is a vital objective of the construction forces. This safety sign depicts a tree which will grow as the exposure hours increase. It is an example of the painstaking approach to the elimination of accidents to the worker.

