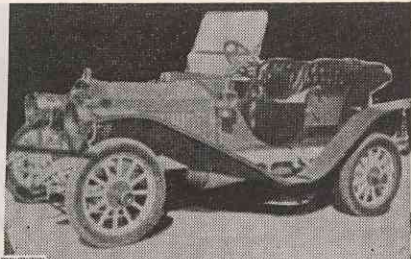
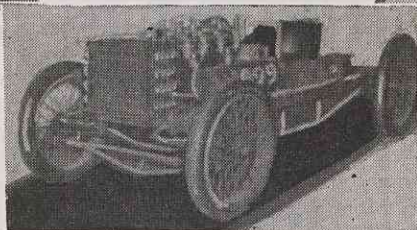


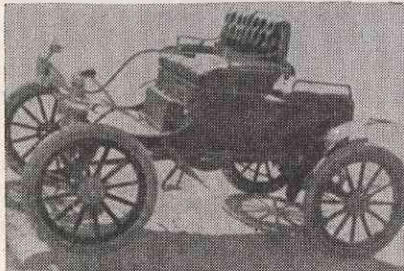
Left: The first Ford, built in 1896.



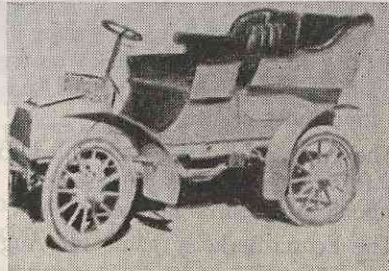
Above: The 1907 Packard.



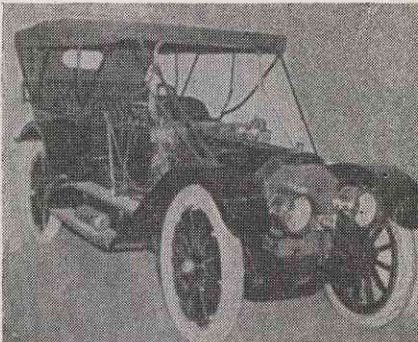
Right: The famous "999", built by Ford in 1902



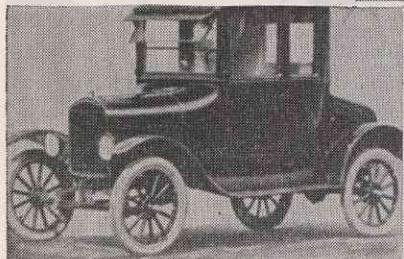
Right: The 1906 Cadillac



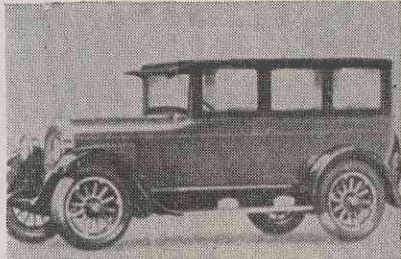
Above: The 1900 Oldsmobile.



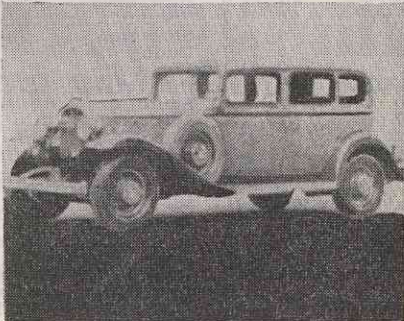
Left: The Oldsmobile "Limited", 1910.



Left: Ford Model "T", 1923.



Above: A 1925 Chrysler sedan.



Right: 1932 Buick sedan.