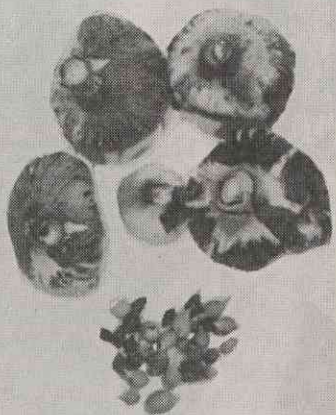


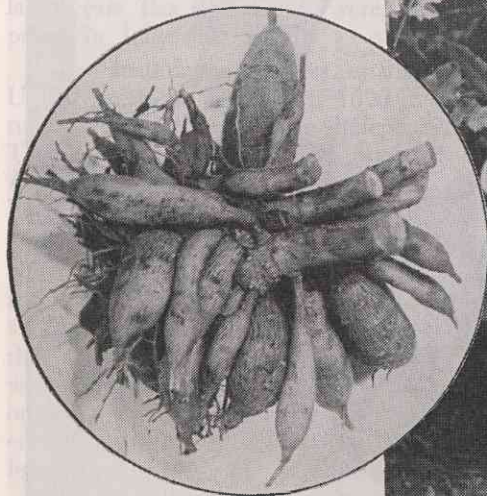


Left: Careful digging with shovel or fork is necessary to protect gladiolus corms (bulbs) from damage. Varieties are kept separate, in burlap or in baskets to prevent mixing.



Above: Gladiolus corms and cormlets that have been cleaned, cured and dusted and are ready for storage.

Below: A Dahlia clump that has been cleaned and trimmed is now ready for labeling and storage.



Right: "Bear" Tinsley of the Yard Crew demonstrates the proper way to lift Dahlia tubers with a shovel or fork to prevent breakage of the tubers.

