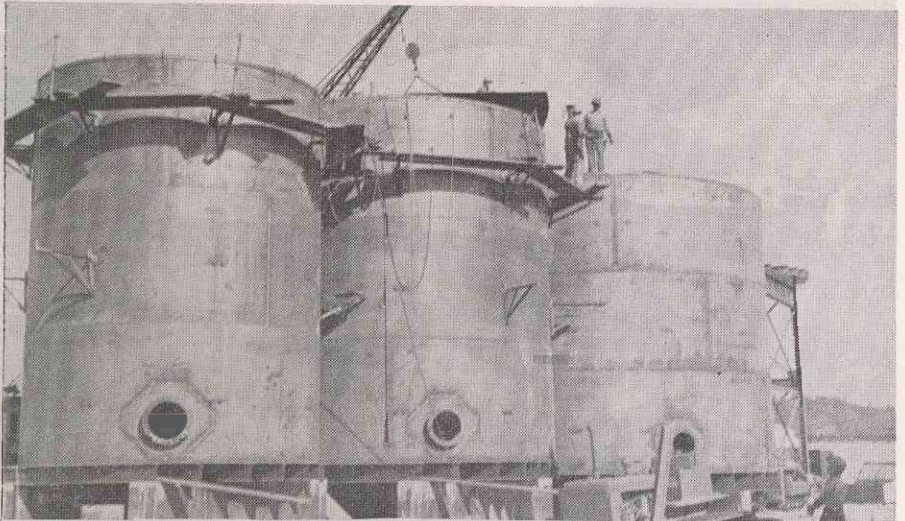


**CELLOPHANE
AS REPORTED
BY OUR
KNOTHOLE
SUPERINTEN-
DENT**



ABOVE: A portion of the tank form at south end of area. Caustic soda tanks, here being welded by field forces, will later be filled from tank cars on adjoining railroad spurs. Sulphuric acid, carbon bisulphide and other chemicals will also be stored in tanks in the immediate area.

AT LEFT: Southwest corner of Chemical House and Viscose Ripening Room. Note method of supporting and elevating the staging used by the brick masons. The 100-foot casting machine exhaust stacks are made of protected sheet metal, coated on inside with a pitch-like substance, and were erected from the top down.

BELOW: Construction workers are shown applying the 3 inches of insulation which covers 20 inch steam line, shows passing through Bleach Pulp Storage in September issue of "The Echo". The heavy steel supports will also carry condensate return, compressed air, chlorine and power lines for cellophane operation.

