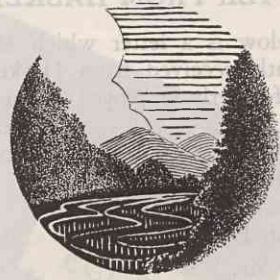


## DO YOU KNOW YOUR LAKES?



There are three groups of lakes in North Carolina as defined by the State Department of Conservation and Development — Great Smokies Group, Sapphire Country Group and Southeastern Group. The Mountain and Piedmont lakes are artificial—the Eastern lakes are natural. Below is

a list of some of the larger lakes, most of which have fishing and water sports. In the left hand column is a list of the lakes, and in the right hand column is their location. See how many you can match by putting the number of the lake by its location. Answers can be found on page 25.

### GREAT SMOKIES GROUP

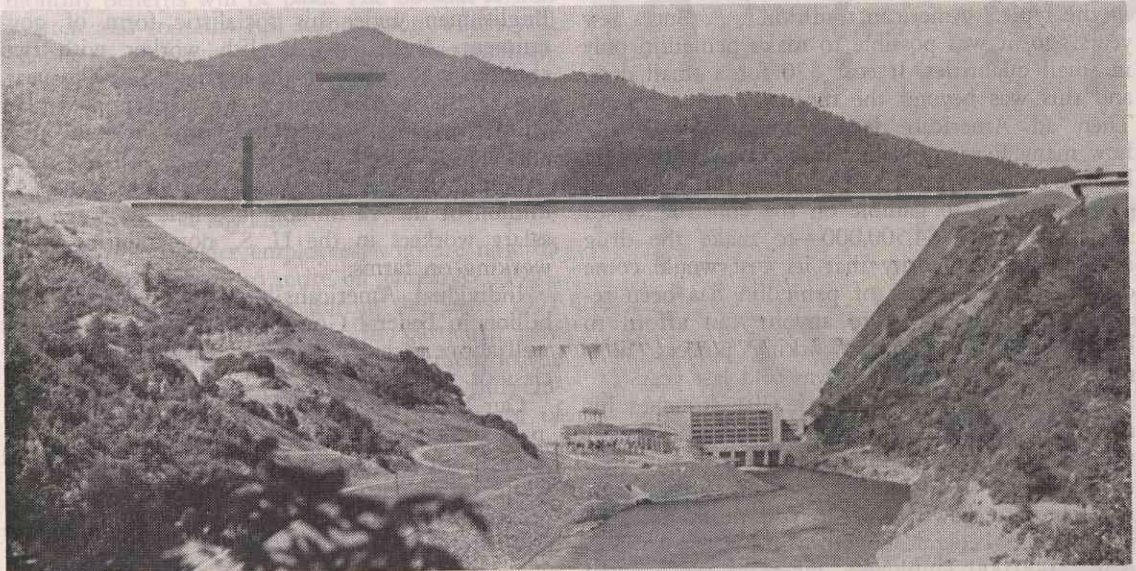
- |               |                       |              |                      |
|---------------|-----------------------|--------------|----------------------|
| 1. Junaluska  | a. Near Brevard       | 6. Hiwassee  | f. Near Bryson City  |
| 2. Waterville | b. Near Murphy        | 7. Chatuge   | g. Hiwassee River    |
| 3. Fontana    | c. W. Fork Tuckasegee | 8. Nantahala | h. Near Robbinsville |
| 4. Chesah     | d. Pigeon River       | 9. Glenville | i. Near Tapoca       |
| 5. Santeetlah | e. Near Waynesville   | 10. Cascade  | j. Aquone            |

### SOUTHEASTERN GROUP

- |             |                        |             |                           |
|-------------|------------------------|-------------|---------------------------|
| 1. Cashiers | a. Near Highlands      | 6. Sapphire | f. Near town by that name |
| 2. Emory    | b. Near U. S. 25       | 7. Summit   | g. Near Cashiers          |
| 3. Tatum's  | c. Near Rosman         | 8. Sequoyah | h. Bonclarken             |
| 4. Highland | d. Near Hendersonville |             |                           |
| 5. Kanuga   | e. Franklin            |             |                           |

### SAPPHIRE COUNTRY GROUP

- |               |                      |                  |                       |
|---------------|----------------------|------------------|-----------------------|
| 1. White Lake | a. Near Tar Heel     | 4. Lake Waccaman | d. Hoffman            |
| 2. Jones Lake | b. Town by that name | 5. Page Lake     | e. Near Elizabethtown |
| 3. Salter     | c. Near Whiteville   |                  |                       |



Shown above is the fourth highest dam in the world at Fontana Lake. This lake, which is the source of electricity for Oak Ridge, is the largest TVA lake in North Carolina.