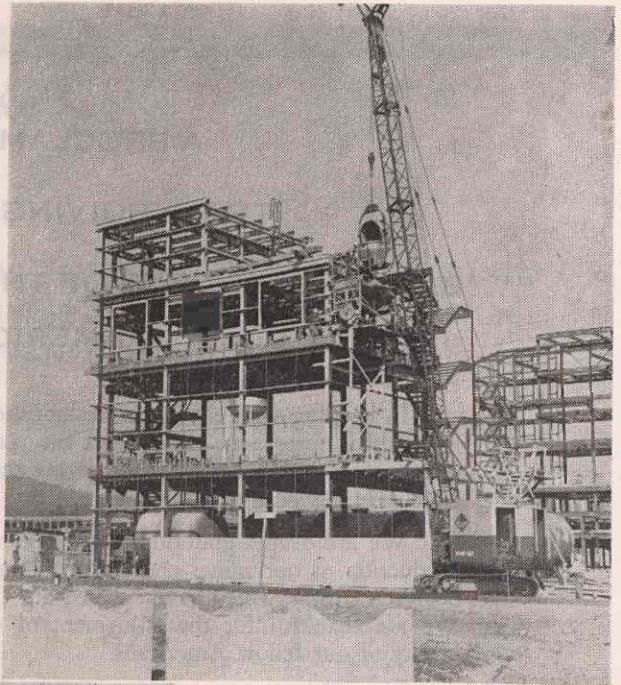
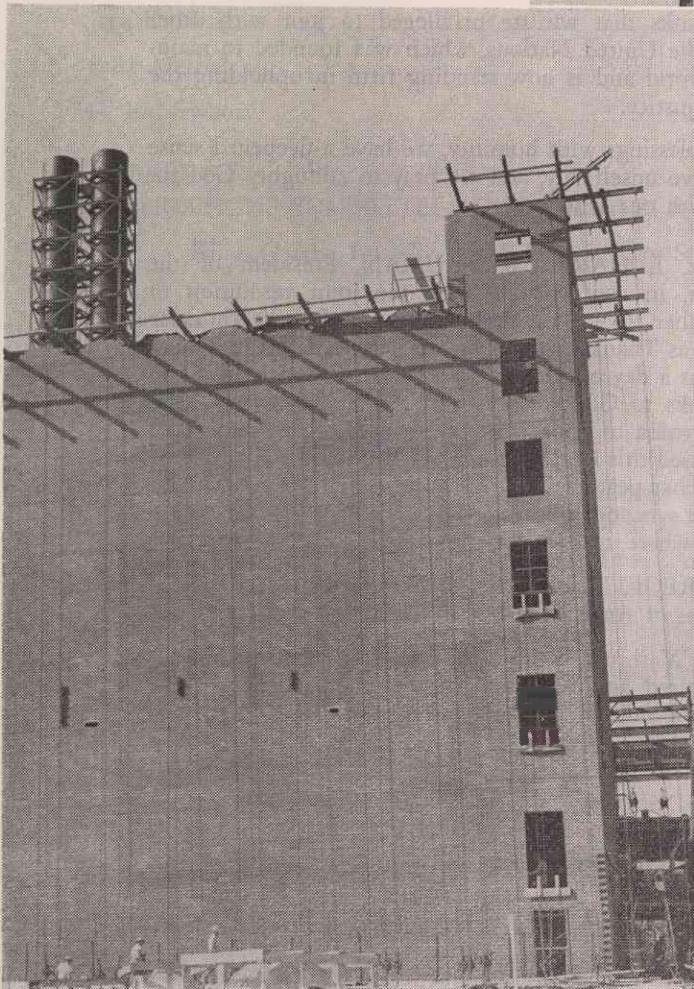




CELLOPHANE AS REPORTED
BY OUR KNOTHOLE
SUPERINTENDENT



ABOVE: With Solvent Storage tank foundations shown in the foreground, this eastward view pictures DuPont forces pouring the upper floors of the Solvent Recovery Building. Note the large bucket lifted by the crane to supply concrete for this operation.



AT LEFT: The south wall of the Chemical House nears completion. The upper portions of the 100' Casting Room exhaust stacks appear at the top of the picture with one side of the Wood Pulp Storage appearing at extreme right.