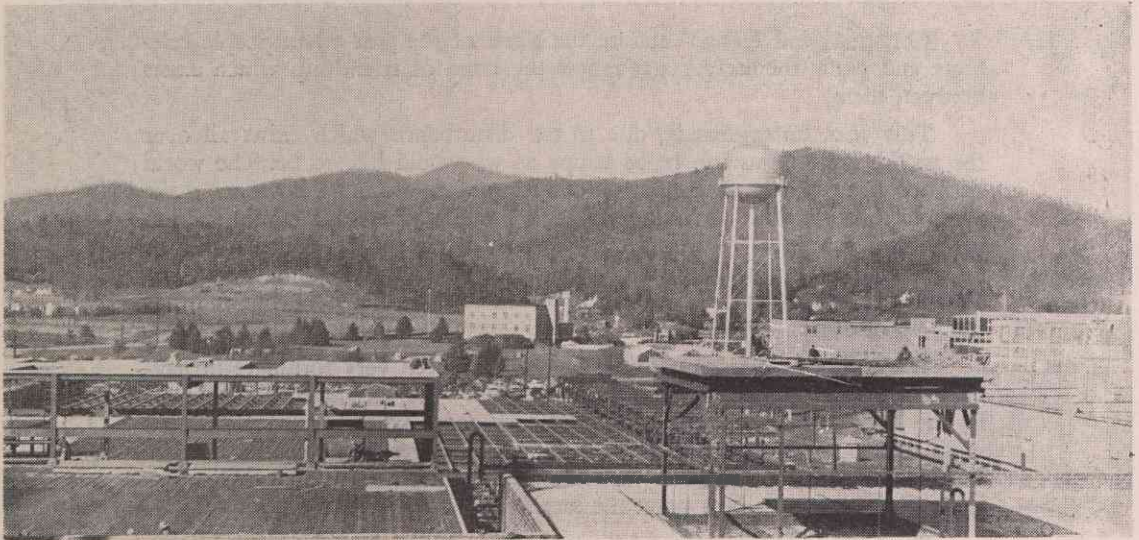


CELLOPHANE

AS REPORTED BY OUR
KNOTHOLE SUPERINTENDENT



Above: This general view was taken from the top floor of the Chemical House. The Ecusta Main Office is in the center background.

Below: The east spur of the new tracks enters the cellophane area. This track will carry cars of wood pulp to sheet-metal storage building at right center and other essential materials to the north

end of the plant. It will also carry the carloads of finished cellophane on outbound shipments. The acid, caustic and softener tanks at the left are served by another spur not visible in this picture.

