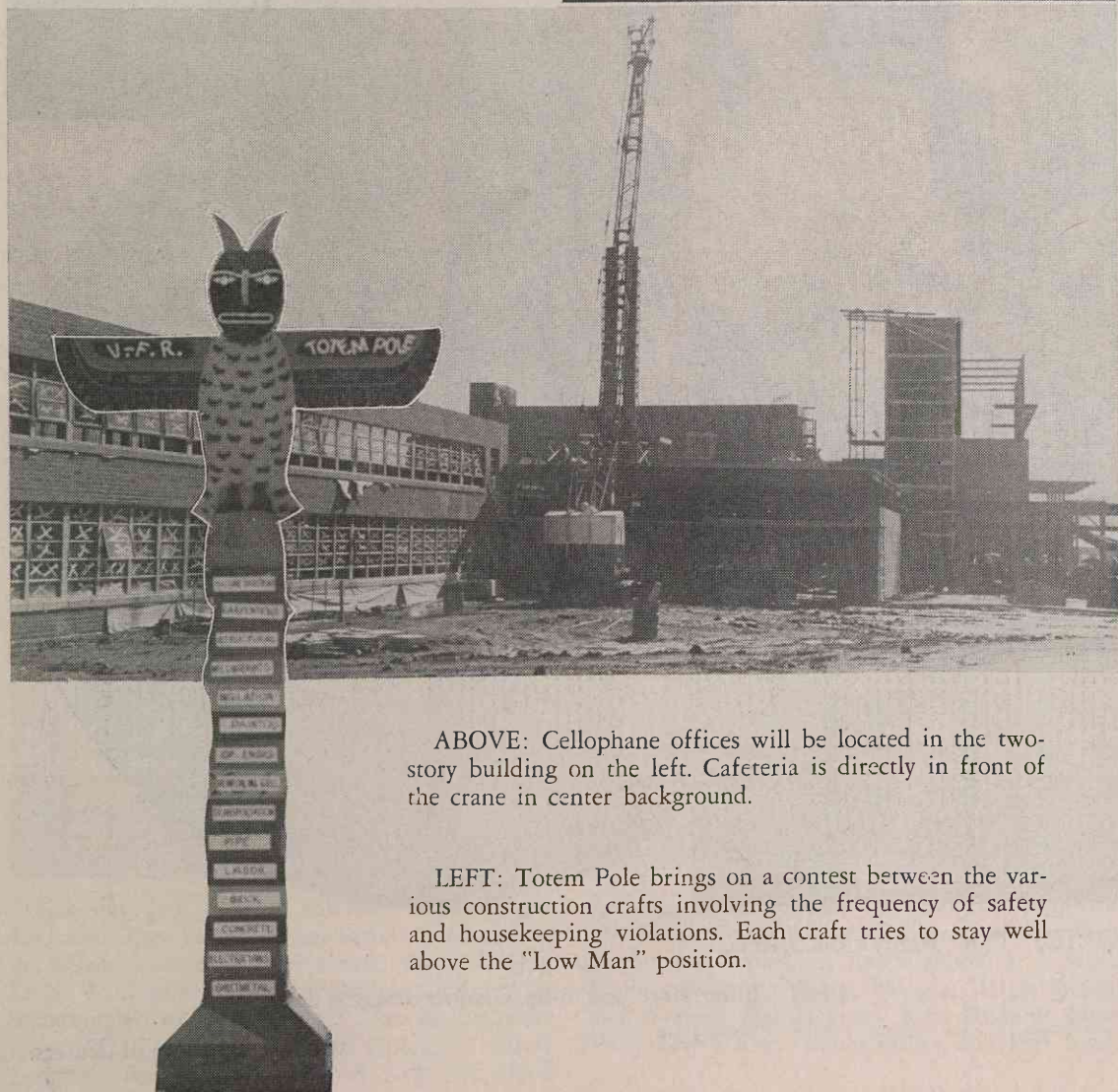
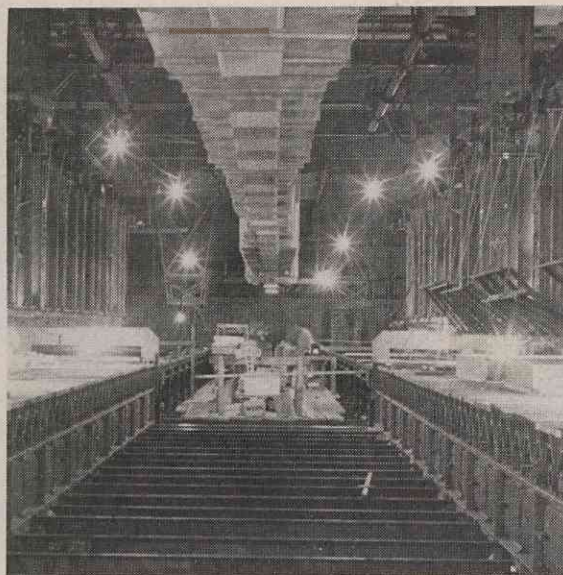




**CELLOPHANE
BY OUR
KNOTHOLE
SUPERIN-
TENDENT**

RIGHT: Looking south from dry end between Casting Machines 3 and 4 prior to installation of steel floor grating. Note air inlet duct running overhead.



ABOVE: Cellophane offices will be located in the two-story building on the left. Cafeteria is directly in front of the crane in center background.

LEFT: Totem Pole brings on a contest between the various construction crafts involving the frequency of safety and housekeeping violations. Each craft tries to stay well above the "Low Man" position.