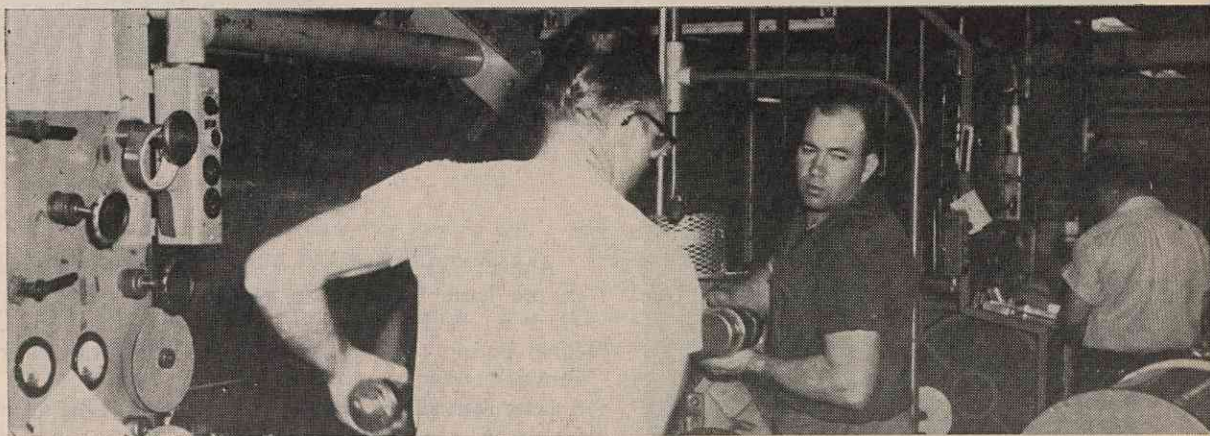


*Above: The flax straw conveyor system creates a picturesque pattern of steel and lights while bales of straw move into the mill for cooking.*

*Below: "Graveyard" Shift workers in Cellophane Slitting Area help make possible a round-the-clock filling of customers' orders.*



*Below: Men of Paper Division Machine Room eat a 2 a. m. meal from "food-wagon" brought thru the mill by Cafeteria employees.*

*Below: A Protection Force policeman "keys in" at one of the many checkpoints in the cellophane area. Fire checks are made periodically.*

