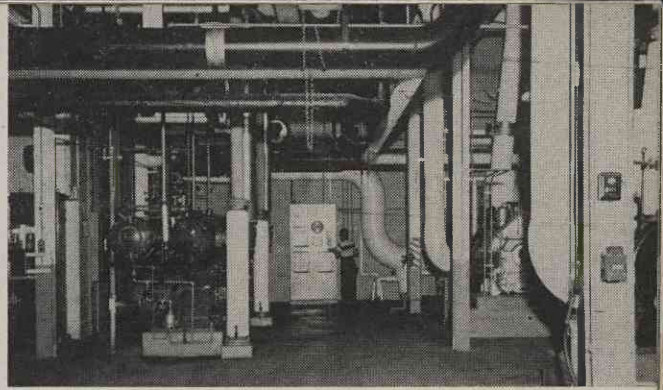
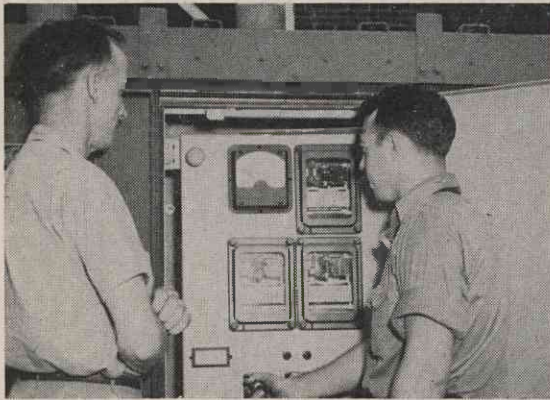


D. L. Thorne adjusts a valve to prime a condensate pump in the Engine Room.



Clarence "Dink" Pressley records instrument readings from Engine Room's master panel meters.



L. N. "Nat" Townsend, Electrical Foreman, and Bill Nicholson check a substation power panel.



George Ryder and Bob Korstain are processing a maintenance order for a machine shop job.



↑
Clyde Whittington and Leroy Mills are repairing the grab-hoist which is above slitting machine.

←
Slitting machine knives must be kept in perfect condition. Norville Singleton is grinding knives.