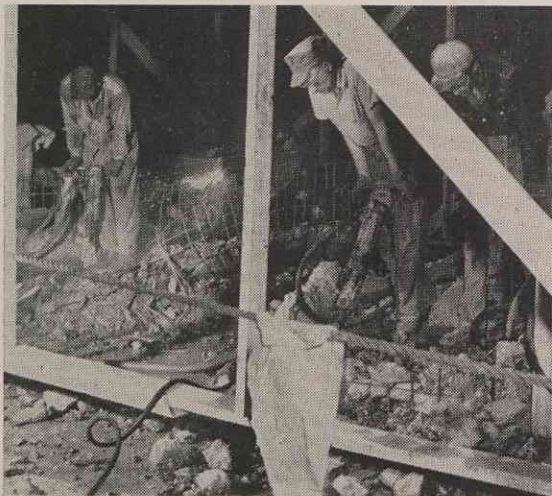




*Above: (left to right) Section Clerk Grover Frisbee, Carpenter Foreman Robert L. Brown, Paint Foreman J. S. Whitaker, Section Supervisor Ted*

*E. Campbell, Landscape Foreman Fred Findley, Unloading Crew Foreman J. Ed Sprouse and Mason Foreman Jess D. Gossett.*



Paper Divison Maintenance's  
**BUILDINGS, GROUNDS  
 AND CONSTRUCTION  
 SECTION**



*Above left: Bill Cline, Jess McCall and Paul Beddingfield of the Masonry Crew use air hammers to remove old-style beaters from refining room. Work assignments for the Masonry Crew often includes removal of old brick or concrete work, as well as putting in new work. Left: Joe Wright, Calvin Day and Calvin Frady put in new underpinning in reservoir pump house. Right: Replacing a wall in Electrochemical plant.*