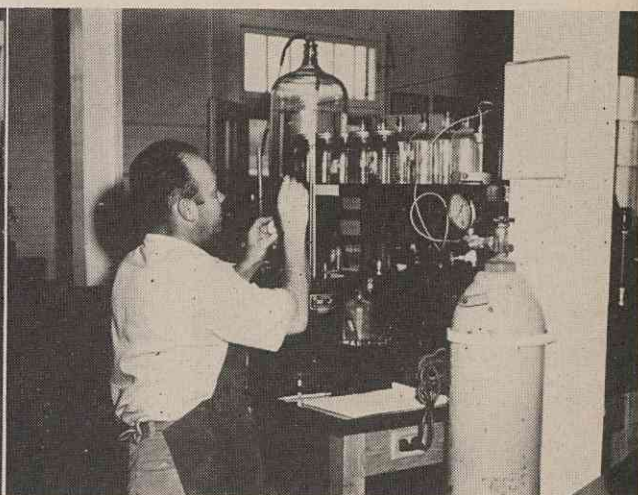
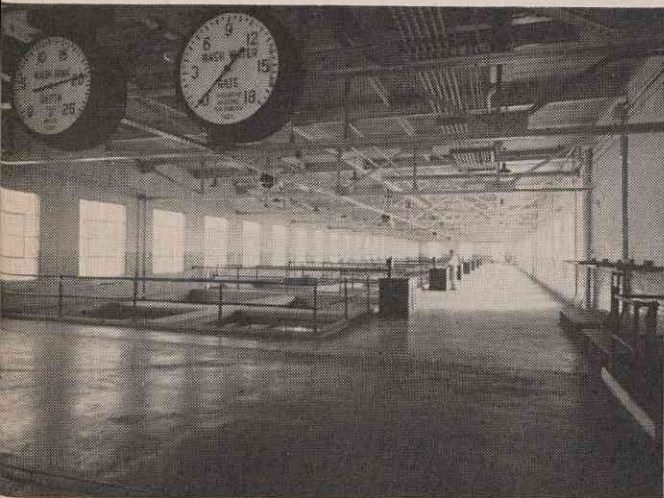




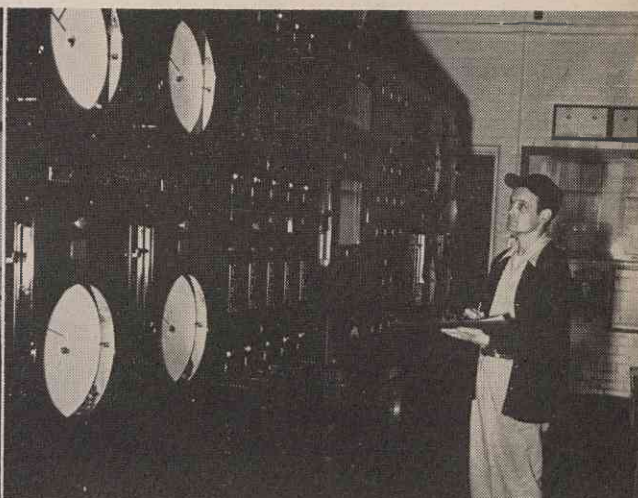
*To determine silica content of boiler water, tests have to be made regularly. William Kuykendall is shown making a test in the laboratory.*



*Fred Floyd is operating a Bomb Calorimeter to determine BTU values of coal. All tests on coal are made in the Filter Plant laboratory.*



*Hunley Mebaffey is shown on the operating floor at one of the eleven filter beds.*



*Larry Dixon is shown taking a reading from recording instrument at the control board.*

control board is located in the Filter Plant from which all pumps can be operated either manually or automatically. Mounted on the board are numerous indicators and recorders which keep operators posted on conditions throughout the entire system. Connected with the various instruments is an alarm system which rings a bell when other than normal conditions exist.

The water sampling table in the laboratory has observation cylinders and outlets to permit viewing and sampling the water at its various stages of purification.

A U. S. Weather Station is maintained at the

Filter Plant by the operating personnel. A daily record is kept of the temperature, relative humidity, precipitation, character of day, fog, hail, thunderstorms, etc. From these and by information from the weather bureau in Asheville, extreme weather conditions are anticipated which greatly aids in the operation of the plant.

A gauging station, to record the flow of Davidson River, is maintained by the U. S. Geological Survey on Ecusta property at a point where the stream emerges from Pisgah National Forest. Daily recordings from this gauge serve as additional operational aid.