

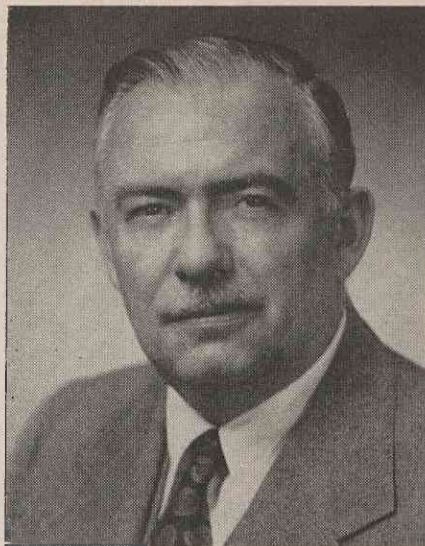
F. S. ELFRED

F. S. Elfred, executive vice president and a director of Olin Mathieson Chemical Corporation, began his career as a mining engineer in Picher, Oklahoma, after graduation from the Missouri School of Mines, Rolla, Mo.

Mr. Elfred was associated with Evans Wallower Zinc, Inc., Cardin, Oklahoma, for 18 years, advancing from engineer to sales manager, vice president and general manager and was for six years its president. He had also been president of the Jane E. Mining Company and the Baxter Chat Company, both of Baxter Springs, Kansas.

Joining the Olin organization as an executive of the former Western Cartridge Company in 1938, Mr. Elfred was made general manager of the Explosives Division in 1944. He was elected a director of Olin Industries in 1952 and was appointed executive vice president in 1952.

Mr. Elfred is a director of the Chicago Great Western Railway and the New Park Mining Company, Salt Lake City, Utah, and the Matholin Cor-



F. S. Elfred

poration.

BACKGROUND INFORMATION ON OLIN MATHIESON CHEMICAL CORPORATION

OLIN MATHIESON PRODUCTS

The recent merger of Olin Industries, Inc., and the Mathieson Chemical Corporation to form the Olin Mathieson Chemical Corporation brought together two companies each with a distinguished history of accomplishment. It represented a joining of equals. Both companies were founded in 1892, and grew during the ensuing sixty-two years to approximately similar size.

At the time of the merger Olin operated three government-owned plants and was reactivating a fourth. The four plants employed approximately 8,500 persons engaged in the production of military ammunition and explosives as part of the national defense program.

Olin originated as a manufacturer of black powder in East Alton, Illinois, while Mathieson began as a regional alkali producer. The rise of both companies represented growth of the original business operations combined with expansion into related fields, and the acquisition of companies possessing qualities and possibilities logical to the development of the respective enterprises.

The new company resulting from the merger, known as the Olin Mathieson Chemical Corporation has approximately 36,000 employees, 45 plants in 24 states in this country, and 16 plants in foreign countries.

MATHIESON PRODUCTS

The Mathieson operations fall into three broad classifications: industrial chemicals, agricultural

chemicals, pharmaceuticals and related products.

Mathieson is a principal manufacturer of six of the basic chemicals produced in this country in largest volume: soda ash, caustic soda, chlorine sulphuric acid, ammonia, and methanol.

These chemicals are used in the manufacture of a wide variety of finished products including aluminum, paper, cellophane, textiles, synthetic fibres, plastics, glass, detergents, fertilizers, pesticides, explosives, petroleum products, and other chemicals.

The company is an important producer of bicarbonate of soda, used in baking powder and fire extinguishers, and is one of the world's largest manufacturers of carbon dioxide and "dry ice."

In the rapidly growing organic chemicals field, Mathieson produces from natural gas ethylene oxide, used in the production of synthetic fibers and synthetic detergents, and ethylene glycol, the main ingredient in permanent type automotive antifreezes. It also produces propane and butane "bottled gas."

Mathieson has long been a principal producer of synthetic fertilizers and agricultural chemical specialties.

The production of high-analysis, pelletized fertilizers was pioneered in the United States by Mathieson. These concentrated materials contain twice as much or more of the most needed plant foods—nitrogen, phosphorous and potassium—as the ordinary fertilizers.

Mathieson also makes standard mixed fertilizers