



The Campus Crier

ASHEVILLE-BILTMORE COLLEGE

Volume XV-R1

ASHEVILLE, NORTH CAROLINA, OCTOBER, 1961

Number 1

New Asheville-Biltmore Campus To Be Dedicated

Trustees Approve Building, Set Budget for Coming Year

The Asheville - Biltmore Board of Trustees has authorized the construction of a third building on the campus and has set a budget of \$241,064 for the year.

Meeting two weeks before the official dedication of the campus the board authorized Stewart Rogers of Six Associates, architects, to advertise for bids for a \$40,000 maintenance building.

The new construction will include workrooms, various shops and storage facilities as well as garage space.

The board also authorized purchase of additional equipment for the physics, psychology, chemistry and biology classes as well as a piano for the glee club and music appreciation classes.

Additional buildings were discussed for the near future. They included in the tentative outline of growth for A-B a student union, a library, and a physical education plant. The details were placed on the agenda to be reviewed further in regard to the needs of each and the order of construction.

In conjunction with the tentative construction talks, representatives were sent to Raleigh a week later to attend a meeting with Gov. Terry Sanford which dealt with the state capital improvements bond issue election set for November.

Alumni Hold Open House

A recent turnout of more than 100 persons attended the Asheville-Biltmore Alumni Association open house held Sunday in the new library.

Dr. Joseph Schandler, president, noted that the largest alumni meeting in the school's history had totaled only 15 persons when it was held several years ago.

Under Schandler's direction, the group discussed plans to make the organization more active.

Mrs. Emily P. Eustis, college librarian, and Mrs. Catherine Libby and officers of the student council, served refreshments. Students also conducted tours of the new campus buildings.

Class representatives for Sunday's reunion were Shelby E. Horton, Jr., John Tipton, Mr. and Mrs. Larry Carter, Mr. and Mrs. Ed. Taylor and Joel Holt.

Others included John Young, Jr., Miss Dorothy Mosely, Fulton Roberts, Jr., Lonnie Turner, Jessie Morgan, John Taylor, Mrs. Ann Anderson, James Penley, Miss June Sollod, Mrs. Barbara Wilson.



DR. GLENN L. BUSHEY

Social Season Opens With Two Dances

The Asheville - Biltmore social season began with two Student Council sponsored dances on Sept. 23 and 30.

The first party was held in the snack shop with music by the "Downbeats". This well-attended party was stopped an hour early by Dean Joseph Parson because of an infraction of college rules.

The "Rat" dance took place the following week. This party, with music from a juke box was held in the Snack Shop. In honor of the freshmen, the informal affair was held from 8:30 p.m. until 11:30 p.m.

Governor Sanford, Dr. Bushey To Speak



GOV. TERRY SANFORD

Gov. Terry Sanford will deliver the principal address during dedication ceremonies Sunday at Asheville - Biltmore Junior College.

The 3 p.m. program will be held in the breezeway between the two major portions of the administration Building.

Sanford, who will travel from Raleigh especially for the occasion, will be honored with a luncheon before he appears as principal speaker.

Dr. Glenn L. Bushey, college president, will conduct the program which will be opened by Dr. D. Hidden Ramsey.

Greetings will be extended by Roy A. Taylor, U. S. congressman from the 12th district; Dr. John Caldwell, chancellor of North Carolina State College; Dr. W. Dallas Herring, chairman of the state board of education; and Major L. P. McLendon, chairman of the state board of higher education.

The campus and the large Administration and Science buildings will be presented by Coke Candler, chairman of the board of county commissioners; and by Earl W. Eller, Asheville mayor.

Robert F. Phillips, chairman of the college board of trustees, will deliver the acceptance. He will be followed by Manly E. Wright, vice chairman of the board of trustees, who will introduce Gov. Sanford. Rabbi Sidney E. Unger will offer the prayer of dedication.

And an open house will be held from 4 p.m. to 6 p.m. at the Administration building.

Sponsors of the dedication program are the administrative officers and the board of directors. College officers include Robert F. Phillips, chairman; Manly E. Wright, vice chairman; O. E. Starnes, Jr., secretary; William J. Reese, Jr., treasurer; and Dr. Glenn L. Bushey, president of the college.

Other board members are John M. Barnes, J. W. Byers, J. Gerald Cowan, Mrs. Charles E. Dameron, Jr., Edwin B. Garrett, Louis Lipinsky, Sr., J. Alfred Miller, James P. Parker, Miss Gertrude W. Ramsey and John M. Reynolds.

Builders of the new campus, which is located between King St. extension and Broadway Ave., include the following firms: Six Associates, Inc., architects and engineers; R. L. Coleman and Co., general contractor; Moser Plumbing Co., plumbing and heating contractor; M. B. Haynes Electric Co., electrical contractor; William Pitkin, design of walks and grounds; and Tennent Nurseries, landscape planting.

College Reaches Peak Enrollment

Asheville - Biltmore Junior College has the largest enrollment in its 34 year history with 554 students registered for the fall, 1961 semester, Dr. Glenn L. Bushey, President, said.

This is an increase of 20 to 25 per cent over the previous year when there were 419 students attending the two year school.

When Asheville - Biltmore first opened its doors in 1927 there were 82 persons in the student body. At that time the school was housed in Biltmore High School.

After a move several years later to David Millard Junior High School, the Asheville Orphanage on Merrimon Avenue and then to Seely's Castle on Sunset Mountain in 1949, the school could count 196 persons in day school and 164 in their night division.

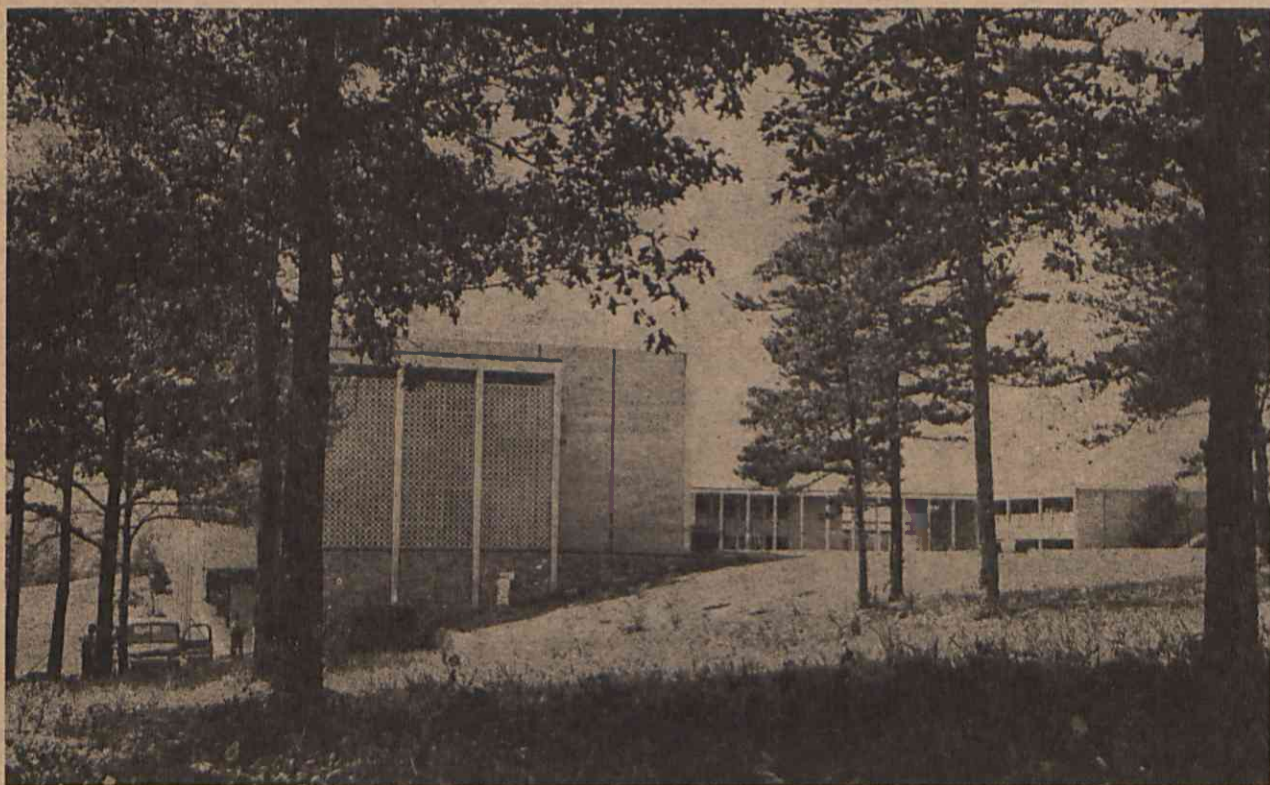
Enrollment dropped sharply in "castle" headquarters during the war but has climbed steadily since then.

With the move to the new campus between King St. and Broadway, the college reaches an all time peak which Dr. Bushey believes is only the beginning.

He believes that as more people become education minded and see the beautiful as well as useful campus we have, they will realize that there is no longer a need to go out of Asheville to obtain a college education.

Red Cross Blood Mobile

The Red Cross Blood Mobile will be at the Snack Shop on Wednesday, Oct. 11, both morning and afternoon. Watch the bulletin board for definite hours. Every student is urged to give a pint of blood, both for his own safety and that of others.



SHADY groves surround the completed structures now on campus. . . . The Science Building to the left and the Administration Building to the right. Both background and architecture are representative of the A-B campus of the future.