

FEATURES

THE BLUE BANNER

Things To Do

Friday the 30th

*Scottish Country Dances, 7:30-9:30pm - classes are held at the Harvest House Center, 205 Kenilworth Rd. Call 684-8214 for more information.

Saturday the 1st

*Applications of European and Egyptian Geometry 8am- 6pm Owen Conference Center 302 Call 828/296-8324. (Registrants Only)

Sunday the 2nd

*Big Band Swing Dance featuring the 18-piece UNCA Community Jazz Band. A donation of \$5 is requested at the door. Justice Gymnasium, 6-9pm

Tuesday the 4th

*Juggernaut & Downbreak & Mirage @ Asheville Music Zone, 9pm

Wednesday the 5th

*Roller Skating Party 7pm @ Skate-A-Round USA sponsored by Libertarian Party of Buncombe County on Weaverville Hwy. All local families and community members invited.

Friday the 7th

*Clyde Edgerton, Reading and Musical Performance with his new band, "The Rank Strangers". 8pm. Cannon Lounge in Gladfelter Hall, Warren Wilson College. \$15 general public, \$12 Writer's Workshop Member, \$6 students. 254-8111 for more info.

Sunday the 9th

*Holiday music performed by UNCA choral and instrumental ensembles. \$5 donation requested. Lipinsky Auditorium, 4pm

Two local heavy metal bands perform

Lena Burns
Editor-in-Chief

Two local heavy metal bands, Down Break and Life's Ruin, put on a killer show at the Asheville Music Zone Nov. 27, bringing in sounds of heavy metal mayhem.

The opening act, Down Break, finally began their set after a spell of confusion set forth by the AMZ's sound geeks.

This was Down Break's first show as a band, although all musicians in the band are experienced. Despite it being their first performance together, the members seemed quite calm and ready to rock out.

Down Break consists of Mac Ball on vocals, Shaun Blanton on guitar, Gene Rice on guitar, Lee Buckner on bass and Rob Miguel on drums.

The band is a wicked mixture of powerful riffs and energetic drums that make it hard to sit still. Their sound can only be described as "groove metal with a Southern twist," said Blanton.

The heavy, yet heart-pounding sounds of Down Break make this band unique from the other trend-metal wannabe-rock stars found in the remainder of the Asheville metal scene.



LENA BURNS/EDITOR

Down Break vocalist Mac Ball (left) and bassist Lee Buckner rock out to the crowd during their debut show.

Down Break sounds somewhat like a mixture of Corrosion of Conformity and Machine Head, but combines these influences with their own incredible talent to create a sound that you will never see on MTV (that's a good thing).

The headlining band, Life's Ruin, is more on the death/black side of the heavy metal spectrum. The members, hiding behind a mask of demonic stage makeup and inaudible lyrics, also have a talent for this genre of music incomparable

The heavy, yet heart-pounding sounds of Down Break make this band unique from the other trend-metal wannabe-rock stars found in the remainder of the Asheville metal scene.



LENA BURNS/EDITOR

Life's Ruin bassist Roger Maynard sports demonic makeup onstage.

to other bands, especially those around Asheville.

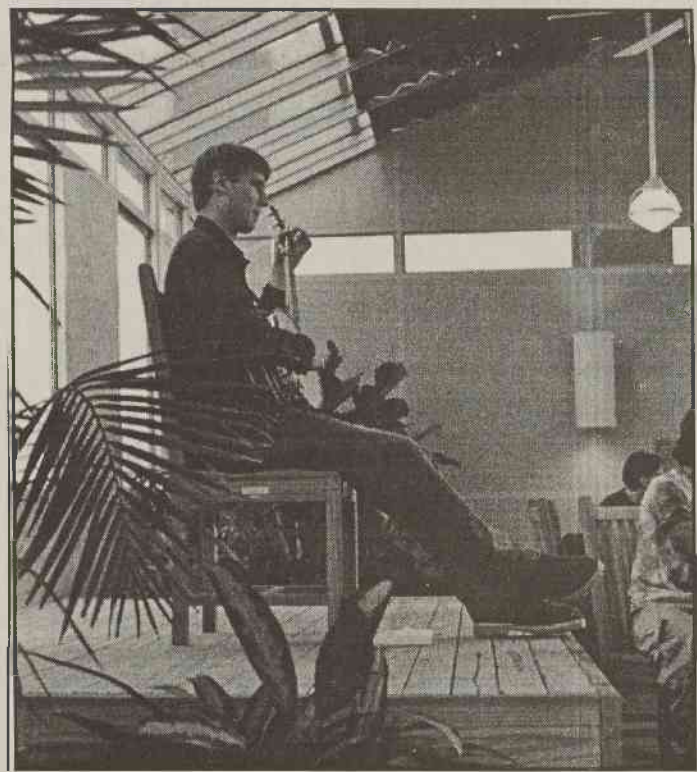
Life's Ruin blends together a combination of deep, growling vocals, furious blast drum beats and fast guitar riffs which can make anyone like death/black metal, even if it

isn't their style.

Both bands put on a spectacular show, and despite the small crowd, once the word gets out about these two bands, they will certainly put current local metal bands' popularity to the test.

Review

The Latin Trio performs at the Glass House



LOU HORTON/STAFF PHOTOGRAPHER

Ben Saylor plays the banjo for students in the Glass House as part of the Clear Window on The Arts series

Megan Fazekas
Features Reporter

UNCA's Clear Window on the Arts series is a great opportunity to enjoy the tranquil setting of UNCA's Glass House while enjoying lunch.

These free performances are open to the public every Wednesday and Thursday at 12:15 pm.

The Glass House, located next to Ramsey Library, is a beautiful room filled with plants and flowers. The well-lit "house" is warm, in comparison to the chill autumn weather.

The Glass House is modern with a very tranquil atmosphere. There are many tables and chairs for students to study or to have a snack break.

On the small stage Nov. 15, the Latin Percussion Trio performed. Their drums hardly fit in the small space, but the small size of the glass house allowed for great acoustic sounds.

The trio's players were John Haynes, Teal Brown and Mike Horgan, whose talents varied on a

number of different drums.

The band seemed nervous about playing, but once they got warmed up they really started to groove.

It was so relaxing and calm to sit back and enjoy the Latin rhythms and the peaceful room.

The audience was small but appreciative. People trickled in and out during the performance, but it would have been nice if more people stayed for the whole show.

The Latin Percussion Trio played very complicated compositions. They played three songs, repeating them a number of times until they ran out of time.

Each time they repeated a song it seemed to have gotten stronger. The rhythms were technically complicated, but they seemed to play it smoothly.

The trio also experimented with a composition from Mozambique.

There were also some great drum solos that exemplified the talent of the group. The trio seemed comfortable among the sparse crowd and small room.

Overall, the Latin Percussion Trio had a good performance that really made me appreciate the diverse sounds that they played.

The Glass House is a great place to relax and get away from the busy school day. The new building offers students and faculty a refuge from reality.

The plants, smells and overall warm atmosphere combine to form a bright and airy glass house. Make use of the new addition to Ramsey Library, bring a bag lunch while you relax and listen to students and others play music.

"The rhythms were technically complicated, but they seemed to play it smoothly"

Available Scholarships

The National Society of Accountants Scholarship Foundation is now accepting applications for financial assistance for the 2002-2003 academic year.

See the financial aid office for specific criteria. Applications and more info available online at www.nsacct.org.

University Place Apartments

255 Barnard Avenue
828-251-9290

New Apartments Now Renting
Adjacent to UNCA Walk to Class Plenty of Parking

- Designed for students
- 4-student suites
- Large 1,190 square foot apartments
- Each has a private deck or porch
- Each apartment has 2 full bathrooms
- Each student has own study space
- Each apartment has energy efficient Hydronic Heating system
- Each apartment has 6 inch cellulose insulated walls and thermal glass windows and doors
- Berber carpet is used throughout
- Kitchen is complete with Microwave, dishwasher, and first free refrigerator
- Plenty of closets and storage
- High Speed Internet access through the cable TV system is available to each student space
- 2 telephone hookups available to each student space
- Laundry facilities on site
- Walk to Class
- Handicap unit available

