

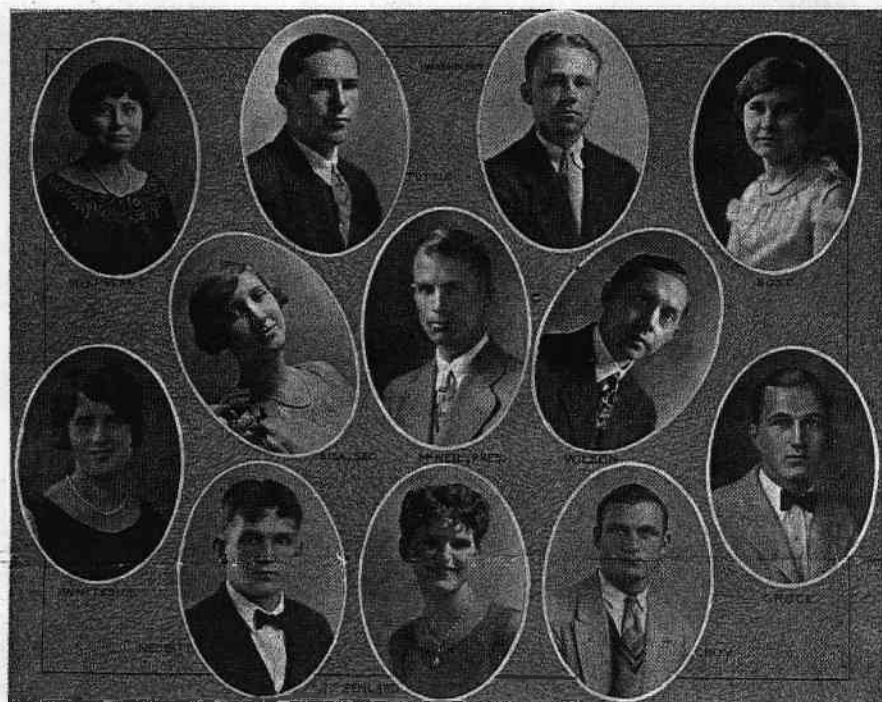
THE WEAVER COLLEGE '26-'27 BASEBALL TEAM



PEP STAFF

Top row, left to right: E. N. Washburn, Jr., Miss Elizabeth Roberts, H. D. Boyles. Bottom row, left to right: Miss Lillian Barber, Miss Lucile Smith, Miss Dorothy Weaver

We, the Pep staff of 1926-27, wish to express our appreciation for the loyal co-operation of the student body and teachers and especially that of the reporters from the various organizations. Our work on the Pep staff has been a pleasure; we extend to the staff of next year our best wishes for a better paper, and may the future bring to the students and faculty only the best.



COLLEGE COUNCIL

EPWORTH LEAGUE

The Epworth League is one of the leading Christian organizations on the campus, and it has done its part in promoting and developing Christian character throughout the past year.

Our meetings have been held each Sunday evening at 6:15. The programs have been the source of great inspiration as well as of valuable training in Christian leadership. The world is calling for leaders, and with that call comes the clarion call for Christian leadership. The Epworth League recognizes that fact, and has done its part in training men and women for Christian service in the Master's vineyard. We believe that the Epworth League has peculiarly fulfilled its task this year, in the development of Christian character and the training of Christian leaders as no other organization has done or can do.

Next to Christian leadership our League has upheld the standard of social life by providing the right kind of entertainment. Various socials have been held during the year, and they have been occasions that we shall fondly remember. The League has the distinction of providing the first and last social of the college year, both of which have been gala affairs.

Not only has the Epworth League torch beamed upon our own campus, but it has lighted the path of many of the weaker

leagues throughout the year. Many pleasant Sunday evenings have been spent in visits made to other chapters over the district. Many times while Weaver College Epworth League was going on within her own walls, travelers, preachers, and lecturers have played the part of the missionary by trodding over many miles to give programs in country churches.

Among the year's activities the League has the distinction of having put on the greatest play of the year. "Thank You" was a great success, thanks to the players.

Neither do we blush when finances are mentioned. The League has contributed one hundred dollars toward the Missionary Special and was one of the four Leagues in the Asheville district to pay its pledge—fifty dollars—thanks to the leaguers; may we have even a greater success next year!

Ford: "That girl is the ugliest person I ever saw."

Miss Smith: "Not so loud, you're forgetting yourself."

Prof. Duncan: "Describe the manners and customs of India."

Beans: "They haven't any manners and they don't wear customs."

Beatrice: "Leola, I see you have a new haircut."

Leola: "What did you think it was, second-hand?"



A CAMPUS SCENE IN MID-WINTER