

**AT THE HEAD OF
RECTANGLE STAFF**

(Continued from page 2)
the fall of 1929. During the two years of his academic career he has distinguished himself in his scholastic work, and in many extra-curricular activities, such as the Newtonian Literary Society, Ministerial Band, editor of Rectangle, and the Forensic Club. We are sorry to lose Mr. Eaker by graduation and we wish him the best of success in pursuit of higher education and in life. The citizens of Lawndale should be proud of their son who has made such an enviable record thus far in life. Mr. Eaker we will miss you and we hope that you shall always hold a warm place in your heart for Rutherford College.

C. W. KIRBY.

In 1929 Mr. C. W. Kirby and family moved into a little cottage a little ways off the campus. That home since has become a mecca of hospitality and a blessed retreat for "Jack's" friends when they wanted to be enthused over some new scheme or idea. The warmth of one's own home is found in associating with this family in their quiet household—in fact it would not be to gainsay that company has often been a problem but it is because of the goodness and generous spirit toward the whole student body that Mr. Kirby and his devoted wife have been thus imposed upon.

"Jack" has endeared himself to everyone at Rutherford because of his gifted leadership. Most of the interests of our college have had at the very soul of them the stamp of his personality. Many proposed plans for the obvious advancement of Rutherford would have died of their own inertia had not "Jack" stepped in and carried them to glorious successes. His record on the Rectangle Staff as Advertising Manager has been enviable. He has worked untiringly and the fruits of his consistent sacrifices have been partly realized in the past year's publication.

SENIOR RECEPTION

(Continued from page 1)
usual lawn games and quibbles these hilarious youngsters were conducted into a beautifully decorated parlor room with a color arrangement of Black and Gold. Here a generous refreshment course was served and the affair waxed into a general spree of Tongues. During the course of the evening Mr. Billups asked Prof. John Pons to favor with a speech but Professor only course of the evening Mr. Billups asked Prof. John Pons to favor with a speech but Professor only replied, "I do not feel so hot," showing that even Profs are human at times. Everyone went away feeling that this was the best treat that had come their way this year and all feel just a little closer to these good people as we leave the old institution.

**A BRIEF HISTORY OF
RUTHERFORD COLLEGE**

(Continued from ninth page)
move the college to some town and when this building burned, it seemed the time to move.
A great fight was waged but the stand-patters won the victory. Mr. Starnes resigned in order to fight as a private citizen, and Rev. E. P. Billups, the local pastor, who was already fighting to retain the school, was made president. He fought tooth and toe-nail to keep Rutherford where it is and has been fighting every since.
When Mr. Billups came to the

presidency, there was only \$30,000 endowment. Now, nearly four years later, it has \$135,000. There was \$10,000 worth of remodeling done and the Burke Memorial Hall was erected at a cost of \$60,000. There has been \$100,000 spent in improvements on the campus.

In 1928 Rutherford College had a conditional rating and in 1929 universal recognition with an A-1 rating. There was a falling-off in the number of students after the burning of Weaver Hall, but there has been an increase of from ten to fifteen per cent in the student-body since 1928. There have been only slight changes in the faculty in the last four years, Rutherford College is now eligible to membership in the Southern Association of Junior Colleges.

Well the yarn is spun. We are up with the wool. To add more to this feeble history of mine, time will have to furnish the events

But the other day as I stood on a mountain overlooking this valley these thoughts came to me: Of all things that lie before me here from mountain range to mountain range, the one thing that stands alone, separate, distinct, and worthy to be crowned the Queen of this valley is old Rutherford College; Good old Rutherford! Grand old institution with all her glorious traditions! Oh, what she has accomplished in the past! What illustrious characters have gone out from her! What struggles she has gone through and what glorious achievements are the fruits of her travail!

She is filled with a strong, sturdy manhood, and beside her campus is a colony of superannuated preachers who have gathered here, it seems, in the twilight of their days to lay their weary heads on the bosom of the Mother institution, and rest in the shade of the maples.

DEITZ & TAYLOR

EXPERT WATCH REPAIRING

Hollar Building

HICKORY, N. C.

TELEPHONE 309

Dr. James A. Palmer

OPTOMETRIST

Office Hours:

8 to 12—1 to 5

MORGANTON, N. C.

**MONTGOMERY WARD
& COMPANY**

HICKORY, NORTH CAROLINA

A MERCANTILE ESTABLISHMENT
OF FIRST MAGNITUDE

**FIRST NATIONAL
BANK**

MORGANTON, N. C.

"The Bank of Courtesy
and Service"

—SEE—
A. BOUNOUS
—FOR—
FANCY GROCERIES
—AND—
THE CHOICEST CUTS OF MEAT
VALDESE, N. C.

Dr. W. H. Patton
Eye Sight Specialist

EYES EXAMINED
GLASSES FITTED

FACE THE FACTS—

It is absolutely necessary to keep Good Poultry
Feed for your chickens

Security Poultry Feed

is so compounded that it is a health food for your
poultry at all times of the year.

SECURITY FEED STANDS THE TEST

Call us for your wants when in line for Feeds.
We also have on hand at all times a full line of
High Grade Coal. You will find it clean because
it is forked.

Garrison Feed and Coal Co.

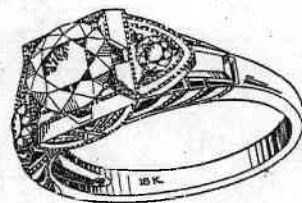
Phone 134

Morganton, N. C.

Valdese Feed and Coal Co.

Phone 329

Valdese, N. C.



**Distinctive
Features**

Your purchase here will always be attractive for its outstanding quality, style and correct design.

Diamonds, Watches
JEWELRY AND SILVERWARE of the highest quality at lowest prices.

GEO. E. BISANAR

Jewelry and Optometrist
HICKORY, N. C.