

Brevard Represented At Consultation

Saturday morning at 5:30 a delegation comprised of Dean Ferree, Lyndon Ashworth, Frank Owen, Linda Tresca, and Marilyn Schnelle set out for Pfeiffer College. Their task was to represent Brevard College on a panel discussion along with two other schools, Pfeiffer and High Point Colleges.

At 10:30 the meeting convened, everyone introduced themselves and then tackled the purpose of the meeting. The remainder of the morning was spent listening to prepared statements by the Deans and SGA presidents of the respective schools, concerning "What a Student Government Association Expects from the College Administration" and "What the College Administration Expects from the Student Government Association," after which a discussion ensued. The main points were that the students' voice should at least be listened to by the administration and that the administration should offer a quality education. It was also stated by Lyndon Ashworth that when a proposal is rational and reasonable, it should not receive a veto from the administration, simply because it was proposed in the better interest of the students. A quote was mentioned that is worth thinking about, "If you didn't want us to think, why did you give us a library card?"

At 12:30 the delegates adjourned to the faculty dining room for a luncheon. Roger Grambling, President of Pfeiffer's Student Government Association and Southern Universities Student Association, addressed the group. He spoke on the topic, "Student Government: Its function in the Campus Community and Its Role in Higher Education." He emphasized that for any Student Government Association to be effective, it must be composed of

—Turn To Page Three

Lucktenburg Duo Scheduled As Part Of Contemporary Arts Festival



JERRIE AND GEORGE LUCKTENBERG

Pertelote Activity Sheets Are Due

Sophomores that have not yet turned in their Pertelote Activity Sheet should do so now. These sheets contain vital information for the sophomore directory in the annual. Those that have lost their sheet may get another one simply by asking a member of the Pertelote staff. Complete this sheet and turn it in to a member of the staff, or put it in the box in the school store.

As of yet, over half of the

sheets have not been turned in. Even those that have no record of activity here at Brevard should turn in a sheet. This is the only way that the Pertelote staff will know.

If anyone is holding back because of a possibility of future activity, don't! Turn the sheet in now. Should it be necessary to add anything later, simply tell a member of the staff, and it will be added.

The Lucktenberg Duo, featuring harpsichord and violin, will appear as the second program offering of the 1970 - 71 Mutual Concert Association Lyceum series on November 7th in the auditorium of the Dunham Music Center as part of the Contemporary Arts Festival.

Jerrie Lucktenberg, violinist, and George Lucktenberg, pianist - harpsichordist, have received widespread critical acclaim not only for the artistry of their diversified programming. An extensive repertoire and an emphasis on authenticity and integrity of style, is solo appearances as well as in concert as husband - wife team, has resulted in an ever - expanding concert calendar and increasing demands for them as master - class clinicians and lecture - recitalists.

Recognition of their unusual combination of ability came early in their joint careers when a Fulbright grant took them to Austria's State Academy of Music at Vienna; its covered Artists Diploma was awarded to each in less than a year there. More recently, a Ford Foundation - sponsored fellowship at the University of North

Carolina, Chapel Hill, provided a season of research into neglected masterworks of their performance specialty — 18th-century sonatas for violin and harpsichord.

Their varied professional backgrounds include studies in violin with such master teachers as Ivan Galamian, Max Rostal, and Ernst Morawec; in piano with Edward Killyni; and in harpsichord with Eta Harich - Schneider.

Of particular interest are the two remarkable instruments which add to the appeal of the Lucktenberg's performances; a superb Stradivarius dated 1718, and a modern nine - foot concert harpsichord built to Dr. Lucktenberg's personal specifications. Rouring is facilitated by the "Harpiscart," their specially - fitted truck.

At present the young couple are artist - teachers at Converse College (Spartanburg, South Carolina). Summers are spent at the National Music Camp, Interlochen, Michigan, where Dr. Lucktenberg has been a member of the keyboard faculty since 1953. Between concert tours the Lucktenbergs enjoy an active home life with their son and two daughters.

Brevard College Glee Club And Chamber Singers To Give Concert

The Brevard College Glee Club and Chamber Singers will be heard in a concert on Friday, November 6th, at the Dunham Music Center, Brevard College. The performance will begin at 8:00 p. m.

The performance is a part of the Fourth annual Festival of Contemporary Arts, opening this week on the college campus.

The Glee Club is under the direction of Harvey Miller, Associate Professor of Music, and a member of the college faculty since 1960. He has directed the Glee Club for six years.

The oldest campus ensemble in continuous existence, the Brevard College Glee Club is also the largest vocal ensemble and major touring group. It represents the college in churches and schools across the eastern seaboard states. For the past several years, the Glee Club has toured states south of

North Carolina and states north in alternate years.

The repertory is varied each year, consisting of short cantatas, sacred anthems and various secular choral works from major composers and Broadway musicals.

The Chamber Singers are under the direction of Mrs. Carolyn Cox, Instructor of Music, who joined the faculty this fall after completing graduate study at Converse College in Spartanburg, S. C.

Each year select groups of men and women audition for membership in the Chamber Singers. The group has distinguished itself by its perfection in performing music from many periods, with emphasis upon polyphonic music. This group, organized to perform for various civic, church and school groups, combines with instrumentalists for short tours as the Chamber Ensemble of Brevard College.

Are You Involved?

Are you the type of person who is just content to sit back and look at other people do all the work? All organizations need followers; but if there are too many followers, who are to be our leaders?

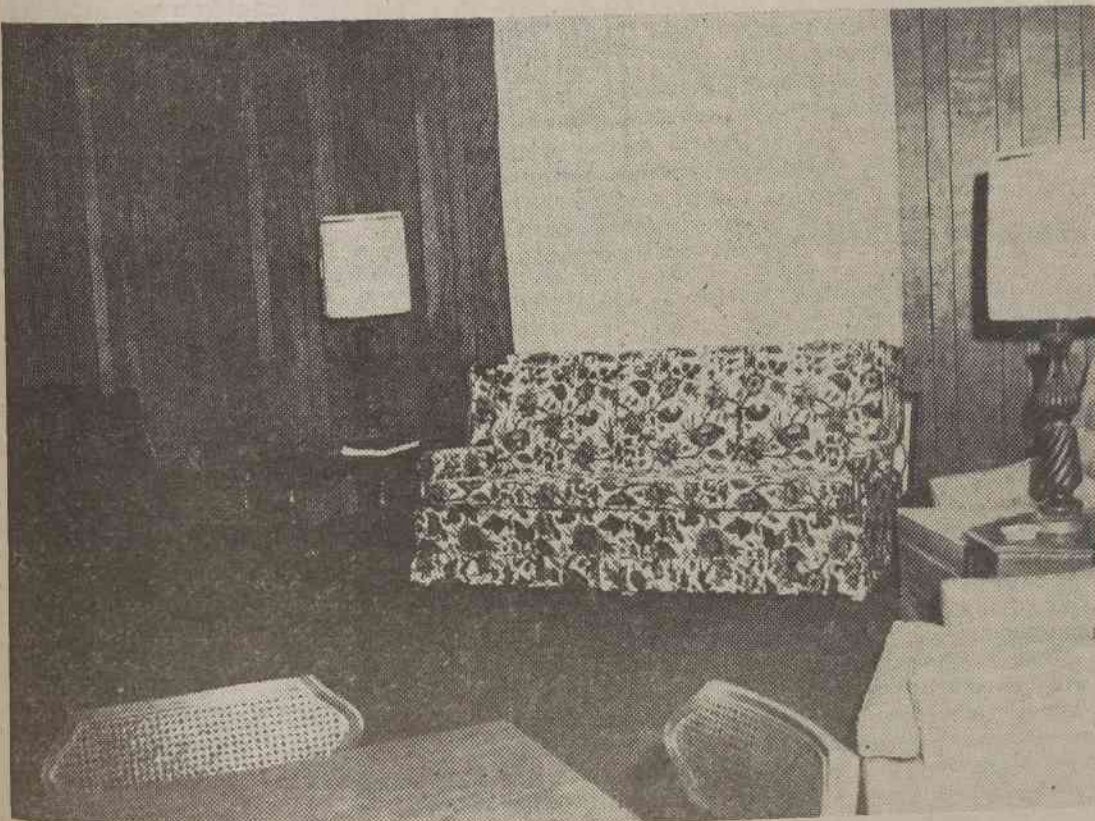
Here on the Brevard campus there are any number of organizations, clubs, and societies which a student can join. These clubs are varied and wide in range so that a student can find one which fits his individual needs. Such clubs as the Methodist Student Fellowship, and the Baptist Student Union

emphasize service to the community and the college society.

The Masquers Club, the drama group, produces at least two plays a year and need anyone who has any acting talents.

Other clubs include Day Student's Club, Business Club, Euterpean, Clisophic, Mnemosynean and Delphian Societies, and Musical Organizations.

Each one of these various clubs welcome any new members.



THE NEW COLLEGE LOUNGE in the Methodist Church is now available for Brevard College Students.